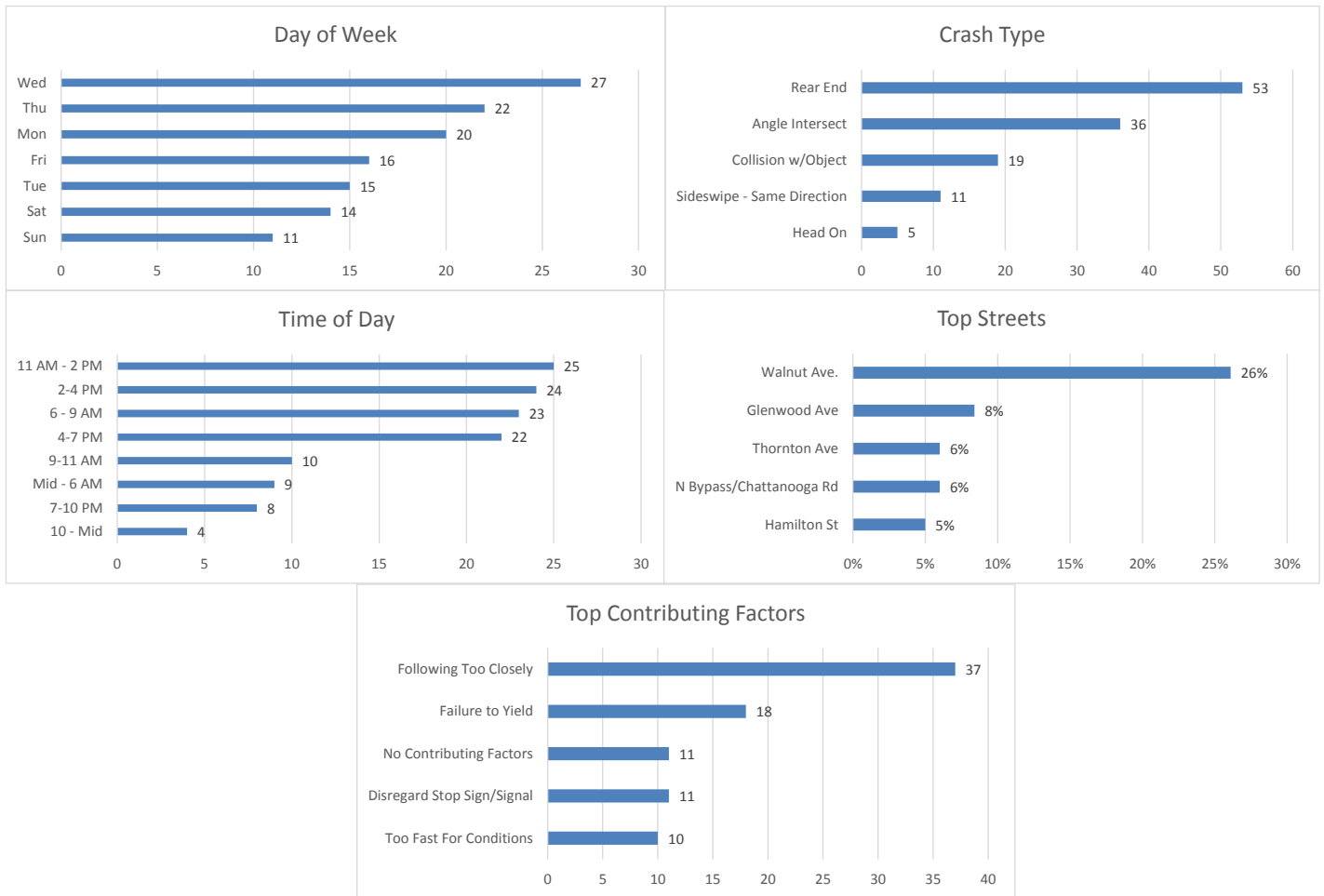


September 2018 Crash Statistics

In September 2018 there were 125 non-private property crashes reported. Total injury crashes and injuries increased from August 2018. There were two serious injuries reported in September 2018. Rear end crashes were the most prevalent during August 2018. Following too closely continues to be the leading contributing factor in crashes, “Following Too Close” was the top contributing factor for injury crashes at 45.8%. Walnut Ave and Glenwood Ave were the roadways where the majority of the crashes occurred. In September 2018 approximately 30% of all crashes in the city occurred on Walnut Ave. In September 2018, Walnut Ave also had the most injury crashes.

See Appendix B for Complete Listing of Reported Crashes



125 Crashes Reported in September 2018

- There were 6 more crashes in September 2018 than in August 2018.
 - 29 Crashes reported in which injuries occurred.
 - That is one injury crash for every 4.3 crashes reported.
 - Multiple injuries were reported in 12 crashes.

- Total Injuries Reported
 - 48 injuries were reported.
 - 2 serious injuries were reported.

Top 5 Streets

- Walnut Avenue
 - 32 Total Crashes
 - 25.60 % of Total Crashes
 - 29.17 % of Injuries Reported (14 Injuries Reported on the Roadway)
- Glenwood Ave
 - 10 Total Crashes
 - 8.00 % of Total Crashes
 - 10.42 % of Injuries Reported (5 Injury Reported on this Roadway)
- N Bypass/Chattanooga Rd
 - 7 Total Crashes
 - 5.60 % of Total Crashes
 - 6.25 % of Injuries Reported (3 Reported Injuries on the Roadway)
- Thornton Ave
 - 7 Total Crashes
 - 5.60 % of Total Crashes
 - 2.08 % of Injuries Reported (1 Reported Injury on the Roadway)
- Hamilton St
 - 6 Total Crashes
 - 4.80 % of Total Crashes
 - 8.33 % of Injuries Reported (4 Reported Injuries on the Roadway)

Crashes Involving DUI

- 6 Reported Crashes involving DUI

Crashes Involving Speed

- 11 Reported Crashes involving Speed (Includes Too Fast for Conditions)

Crashes Involving Distracted or Inattentive Driver

- 16 Crashes Reported with Distracted or Inattentive Driver

Crashes Involving Drivers Following One Another Too Closely

- 37 Crashes Reported involving Following Too Closely

Crashes by Type

- Rear End 53 / 42.40%
- Angle Crash 36 / 28.80%
- Non-Vehicle 19 / 15.20%
- Sideswipe – Same Direction 11 / 8.80%
- Head On 5 / 4.00%

Days of the Week

- 20 crashes occurred on Mondays
- 15 crashes occurred on Tuesdays
- 27 crashes occurred on Wednesdays
- 22 crashes occurred on Thursdays
- 16 crashes occurred on Fridays
- 14 crashes occurred on Saturdays
- 11 crashes occurred on Sundays

Time of Day

- 0000-0559-9
- 0600-0859-23
- 0900-1059-10
- 1100-1359-25
- 1400-1559-24
- 1600-1859-22
- 1900-2159-8
- 2200-2359-4

Top Contributing Factors

- Following Too Closely: 37 (29.60 % of all crashes)
- Failure to Yield: 18 (14.40 % of all crashes)
- No Contributing Factors: 11 (8.80 % of all crashes)
- Disregard Stop Sign/Signal: 11 (8.80 % of all crashes)
- Too Fast for Conditions: 10 (8.00 % of all crashes)

Based on the crash data from August 2018, Selective Enforcement Details were conducted in the following areas in September 2018:

- **Thornton Ave**
- **Glenwood Ave**
- **Walnut Ave**

There were 7 total Enforcement Details conducted in September 2018, resulting in 108 total violations being identified.

Comparing the crash data compiled and the enforcement activities conducted for the month of September 2018, details will be conducted in October 2018 in the following areas:

- **Walnut Ave**
- **Glenwood Ave**
- **N Bypass/Chattanooga Rd**