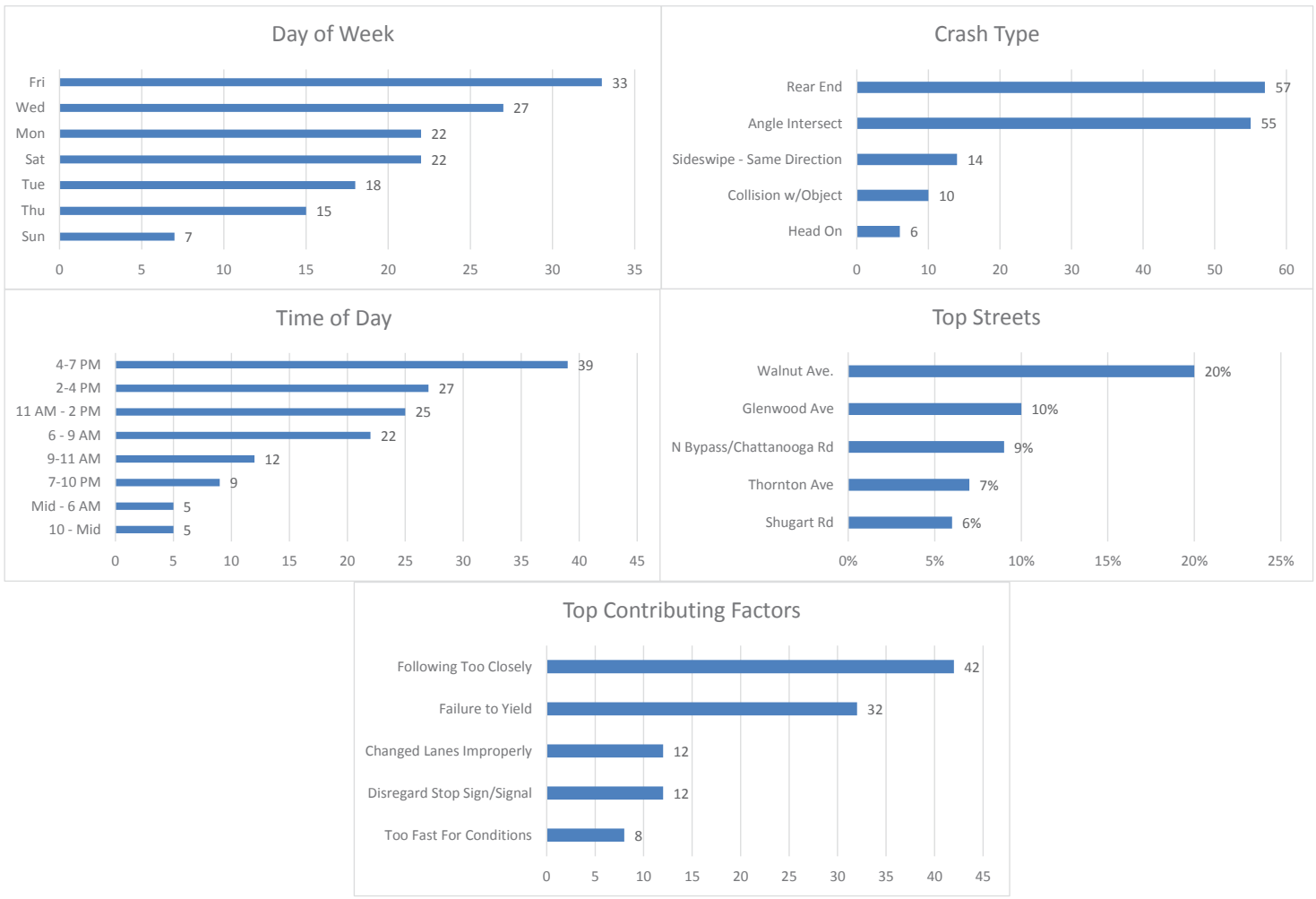


# October 2018 Crash Statistics

In October 2018 there were 144 non-private property crashes reported. Total injury crashes and injuries decreased from September 2018. There were no serious injuries reported in October 2018. Rear end and angle crashes were the most prevalent during October 2018. Following too closely continues to be the leading contributing factor in crashes, while Failure to Yield was the top contributing factor for injury crashes at 36%. Walnut Ave and Glenwood Ave were the roadways where the majority of the crashes occurred. In October 2018 approximately 20% of all crashes in the city occurred on Walnut Ave. In October 2018, Chattanooga Rd/Bypass was the roadway with the most injury crashes.



## 144 Crashes Reported in October 2018

- There were 19 more crashes in October 2018 than in September 2018.
  - 25 Crashes reported in which injuries occurred.
  - That is one injury crash for every 5.76 crashes reported.
  - Multiple injuries were reported in 10 crashes.
  
- Total Injuries Reported
  - 37 injuries were reported.
  - 0 serious injuries were reported.

## Top 5 Streets

- Walnut Avenue
  - 29 Total Crashes
  - 20.14 % of Total Crashes
  - 21.62 % of Injuries Reported (8 Injuries Reported on the Roadway)
- Glenwood Ave
  - 14 Total Crashes
  - 9.72 % of Total Crashes
  - 13.51 % of Injuries Reported (5 Injury Reported on this Roadway)
- N Bypass/Chattanooga Rd
  - 13 Total Crashes
  - 9.03 % of Total Crashes
  - 27.03 % of Injuries Reported (10 Reported Injuries on the Roadway)
- Thornton Ave
  - 10 Total Crashes
  - 6.94 % of Total Crashes
  - 8.11 % of Injuries Reported (3 Reported Injury on the Roadway)
- Shugart Rd
  - 8 Total Crashes
  - 5.56 % of Total Crashes
  - 5.41 % of Injuries Reported (2 Reported Injuries on the Roadway)

## Crashes Involving DUI

- 2 Reported Crashes involving DUI

## Crashes Involving Speed

- 9 Reported Crashes involving Speed (Includes Too Fast for Conditions)

## Crashes Involving Distracted or Inattentive Driver

- 14 Crashes Reported with Distracted or Inattentive Driver

## Crashes Involving Drivers Following One Another Too Closely

- 42 Crashes Reported involving Following Too Closely

## Crashes by Type

- Rear End 57 / 39.58%
- Angle Crash 55 / 38.19%
- Sideswipe – Same Direction 14 / 9.72%
- Non-Vehicle 10 / 6.94%
- Head On 6 / 4.17%

### Days of the Week

- 22 crashes occurred on Mondays
- 18 crashes occurred on Tuesdays
- 27 crashes occurred on Wednesdays
- 15 crashes occurred on Thursdays
- 33 crashes occurred on Fridays
- 22 crashes occurred on Saturdays
- 7 crashes occurred on Sundays

### Time of Day

- 0000-0559-5
- 0600-0859-22
- 0900-1059-12
- 1100-1359-25
- 1400-1559-27
- 1600-1859-39
- 1900-2159-9
- 2200-2359-5

### Top Contributing Factors

- Following Too Closely: 42 (29.17 % of all crashes)
- Failure to Yield: 32 (22.22 % of all crashes)
- Changed Lanes Improperly: 12 (8.33 % of all crashes)
- Disregard Stop Sign/Signal: 12 (8.33 % of all crashes)
- Too Fast for Conditions: 8 (5.56 % of all crashes)

Based on the crash data from September 2018, Selective Enforcement Details were conducted in the following areas in October 2018:

- **Thornton Ave**
- **Glenwood Ave**
- **Walnut Ave**

There were 8 total Enforcement Details conducted in October 2018, resulting in 79 total violations being identified.

Comparing the crash data compiled and the enforcement activities conducted for the month of October 2018, details will be conducted in November 2018 in the following areas:

- **Walnut Ave**
- **Glenwood Ave**
- **N Bypass/Chattanooga Rd**