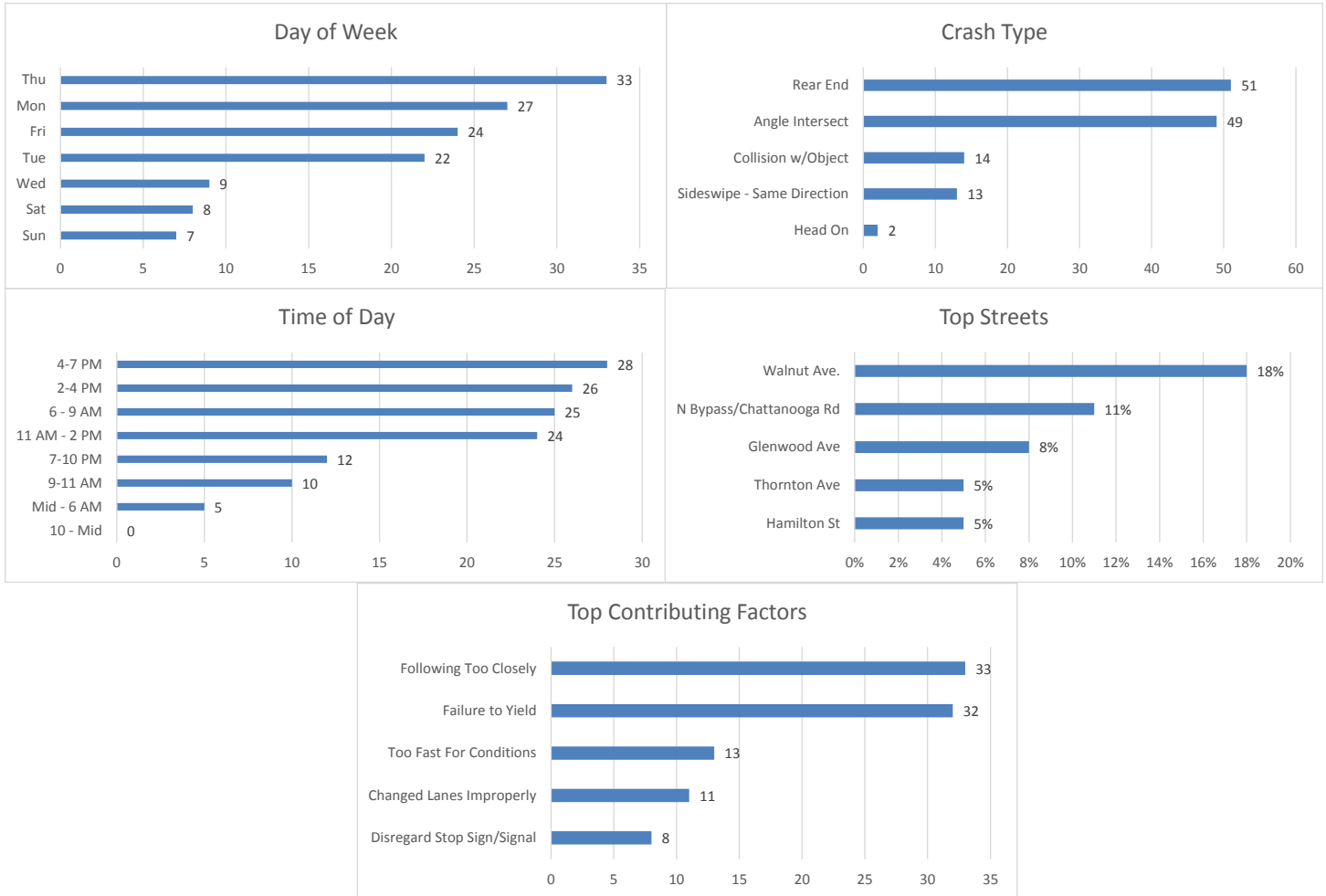


November 2018 Crash Statistics

In November 2018 there were 130 non-private property crashes reported. Total injury crashes and injuries decreased from October 2018. There was one serious injury reported in November 2018. Rear end and angle crashes were the most prevalent during November 2018. Following too closely continues to be the leading contributing factor in crashes, while Failure to Yield was the top contributing factor for injury crashes at 54%. Walnut Ave and Chattanooga Rd were the roadways where the majority of the crashes occurred. In November 2018 approximately 18% of all crashes in the city occurred on Walnut Ave. In November 2018, Chattanooga Rd/Bypass was the roadway with the most injury crashes.



130 Crashes Reported in November 2018

- There were 14 less crashes in November 2018 than in October 2018.
 - 24 Crashes reported in which injuries occurred.
 - That is one injury crash for every 5.42 crashes reported.
 - Multiple injuries were reported in 6 crashes.

- Total Injuries Reported
 - 35 injuries were reported.
 - 1 serious injury was reported.

Top 5 Streets

- Walnut Avenue
 - 24 Total Crashes
 - 18.46 % of Total Crashes
 - 20.00 % of Injuries Reported (7 Injuries Reported on the Roadway)
- N Bypass/Chattanooga Rd
 - 14 Total Crashes
 - 10.77 % of Total Crashes
 - 20.00 % of Injuries Reported (7 Injury Reported on this Roadway)
- Glenwood Ave
 - 10 Total Crashes
 - 7.69 % of Total Crashes
 - 8.57 % of Injuries Reported (3 Reported Injuries on the Roadway)
- Thornton Ave
 - 7 Total Crashes
 - 5.38 % of Total Crashes
 - 20.00 % of Injuries Reported (7 Reported Injury on the Roadway)
- Hamilton St
 - 7 Total Crashes
 - 5.38 % of Total Crashes
 - 0 % of Injuries Reported (0 Reported Injuries on the Roadway)

Crashes Involving DUI

- 2 Reported Crashes involving DUI

Crashes Involving Speed

- 11 Reported Crashes involving Speed (Includes Too Fast for Conditions)

Crashes Involving Distracted or Inattentive Driver

- 9 Crashes Reported with Distracted or Inattentive Driver

Crashes Involving Drivers Following One Another Too Closely

- 33 Crashes Reported involving Following Too Closely

Crashes by Type

- Rear End 51 / 39.23%
- Angle Crash 49 / 37.69%
- Non-Vehicle 14 / 10.77%
- Sideswipe – Same Direction 13 / 10.00%
- Head On 2 / 1.54%

Days of the Week

- 27 crashes occurred on Mondays
- 22 crashes occurred on Tuesdays
- 9 crashes occurred on Wednesdays
- 33 crashes occurred on Thursdays
- 24 crashes occurred on Fridays
- 8 crashes occurred on Saturdays
- 7 crashes occurred on Sundays

Time of Day

- 0000-0559-5
- 0600-0859-25
- 0900-1059-10
- 1100-1359-24
- 1400-1559-26
- 1600-1859-28
- 1900-2159-12
- 2200-2359-0

Top Contributing Factors

- Following Too Closely: 33 (25.38 % of all crashes)
- Failure to Yield: 32 (24.62 % of all crashes)
- Too Fast for Conditions: 13 (10.00 % of all crashes)
- Changed Lanes Improperly: 11 (8.46 % of all crashes)
- Disregard Stop Sign/Signal: 8 (6.15 % of all crashes)

Based on the crash data from September 2018, Selective Enforcement Details were conducted in the following areas in October 2018:

- **Thornton Ave**
- **Glenwood Ave**
- **Walnut Ave**

There were 8 total Enforcement Details conducted in November 2018, resulting in 99 total violations being identified.

Comparing the crash data compiled and the enforcement activities conducted for the month of November 2018, details will be conducted in December 2018 in the following areas:

- **Walnut Ave**
- **Glenwood Ave**
- **N Bypass/Chattanooga Rd**