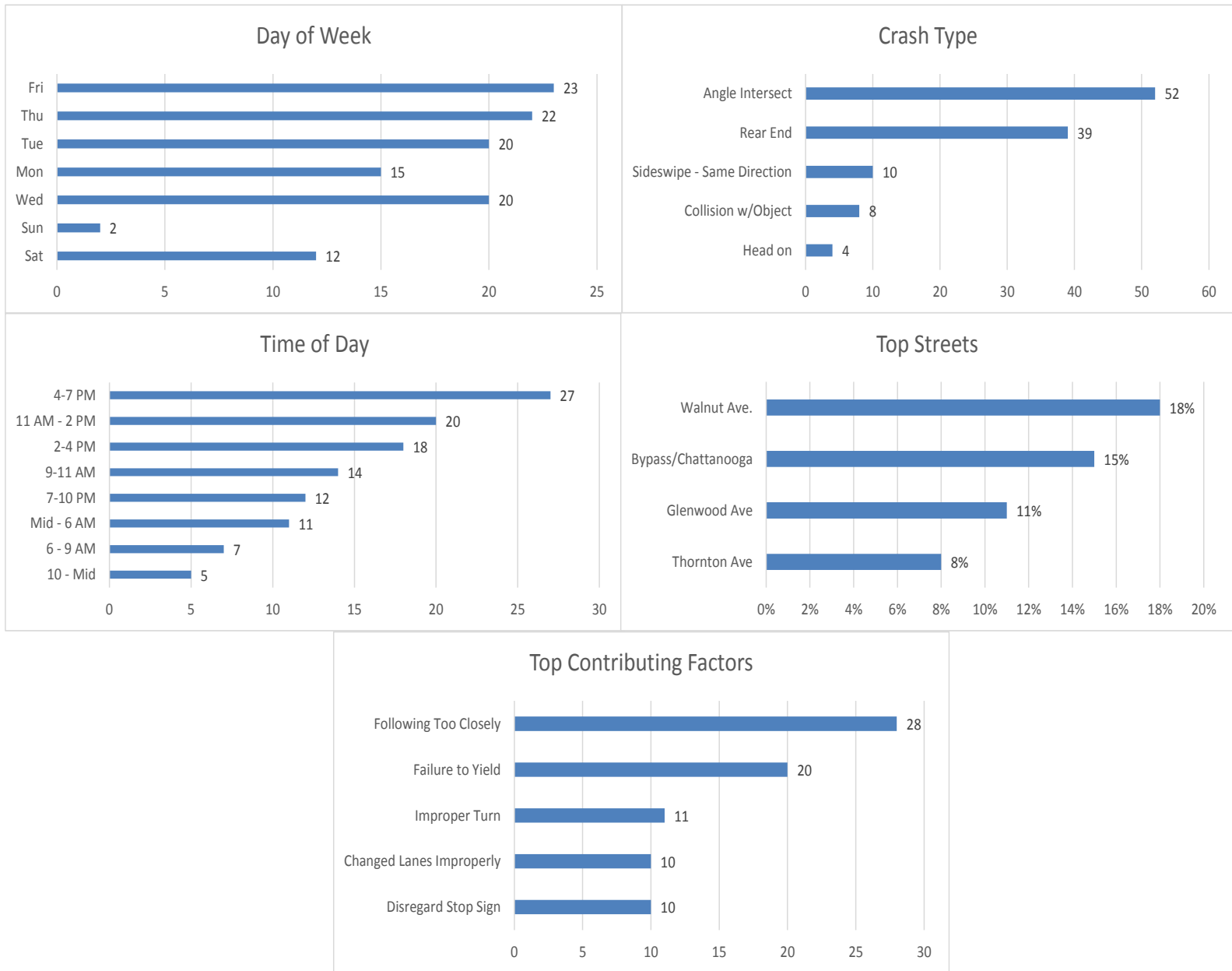


May 2018 Crash Statistics

In May 2018 there were 114 non-private property crashes reported. Total injury crashes and injuries increased from April 2018. There were three serious injuries reported in May 2018. Rear end crashes continued to be the most prevalent during May 2018. Following too closely continues to be the leading contributing factor in crashes, failure to yield was the top contributing factor for injury crashes at 31.37%. Walnut Ave and Chattanooga Rd were the roadways where the majority of the crashes occurred. Walnut Ave continues to remain the top street for motor vehicle crashes, while Chattanooga Rd/Bypass accounted for 29.4% of reported injuries.

See Appendix B for Complete Listing of Reported Crashes



114 Crashes Reported in May

- There were 3 less crashes in May 2018 than in April 2018.
 - 30 Crashes reported in which injuries occurred.
 - That is one injury crash for every 3.8 crashes reported.
 - Multiple injuries were reported in 9 crashes.
- Total Injuries Reported
 - 51 injuries were reported.
 - 3 serious injuries were reported.

Top 5 Streets

- Walnut Avenue
 - 20 Total Crashes
 - 17.54 % of Total Crashes
 - 27.5 % of Injuries Reported (14 Injuries Reported on the Roadway)
- Chattanooga Road and North Bypass
 - 17 Total Crashes
 - 14.91 % of Total Crashes
 - 29.4 % of Injuries Reported (15 Injuries Reported on this Roadway)
- Glenwood Avenue
 - 12 Total Crashes
 - 10.53 % of Total Crashes
 - 11.8 % of Injuries Reported (6 Reported Injuries on the Roadway)
- Thornton Avenue
 - 9 Total Crashes
 - 7.89 % of Total Crashes
 - 5.9 % of Injuries Reported (3 Reported Injuries on the Roadway)
- Hamilton Street
 - 4 Total Crashes
 - 3.51 % of Total Crashes
 - 1.9 % of Injuries Reported (1 Reported Injuries on the Roadway)

Crashes Involving DUI

- 6 Reported Crashes involving DUI

Crashes Involving Speed

- 4 Reported Crashes involving Speed (Includes Too Fast for Conditions)

Crashes Involving Distracted or Inattentive Driver

- 10 Crashes Reported with Distracted or Inattentive Driver

Crashes Involving Drivers Following One Another Too Closely

- 28 Crashes Reported involving Following Too Closely

Crashes by Type

- Angle Crash 52 / 45.61%
- Rear End 39 / 34.21%
- Sideswipe – Same Direction 10 / 8.77%
- Non-Vehicle 8 / 7.02%
- Head On 4 / 3.51%

Days of the Week

- 15 crashes occurred on Mondays
- 20 crashes occurred on Tuesdays
- 20 crashes occurred on Wednesdays
- 22 crashes occurred on Thursdays
- 23 crashes occurred on Fridays
- 12 crashes occurred on Saturdays
- 2 crashes occurred on Sundays

Time of Day

- 0000-0559-11
- 0600-0859-7
- 0900-1059-14
- 1100-1359-20
- 1400-1559-18
- 1600-1859-27
- 1900-2159-12
- 2200-2359-5

Top Contributing Factors

- Following Too Closely: 28 (24.56 % of all crashes)
- Failure to Yield: 20 (17.54 % of all crashes)
- Improper Turn: 11 (9.65 % of all crashes)
- Changed Lanes Improperly: 10 (8.77 % of all crashes)
- Disregard Stop Sign: 10 (8.77 % of all crashes)

Based on the crash data from April 2018, Selective Enforcement Details were conducted in the following areas in May 2018:

- **Abutment Rd**
- **Glenwood Ave**
- **Walnut Ave**

There were 11 total Enforcement Details conducted in May 2018, resulting in 107 total violations being identified.

Comparing the crash data compiled and the enforcement activities conducted for the month of May 2018, details will be conducted in June 2018 in the following areas:

- **Walnut Ave**
- **Glenwood Ave**
- **N Bypass/Chattanooga Rd**