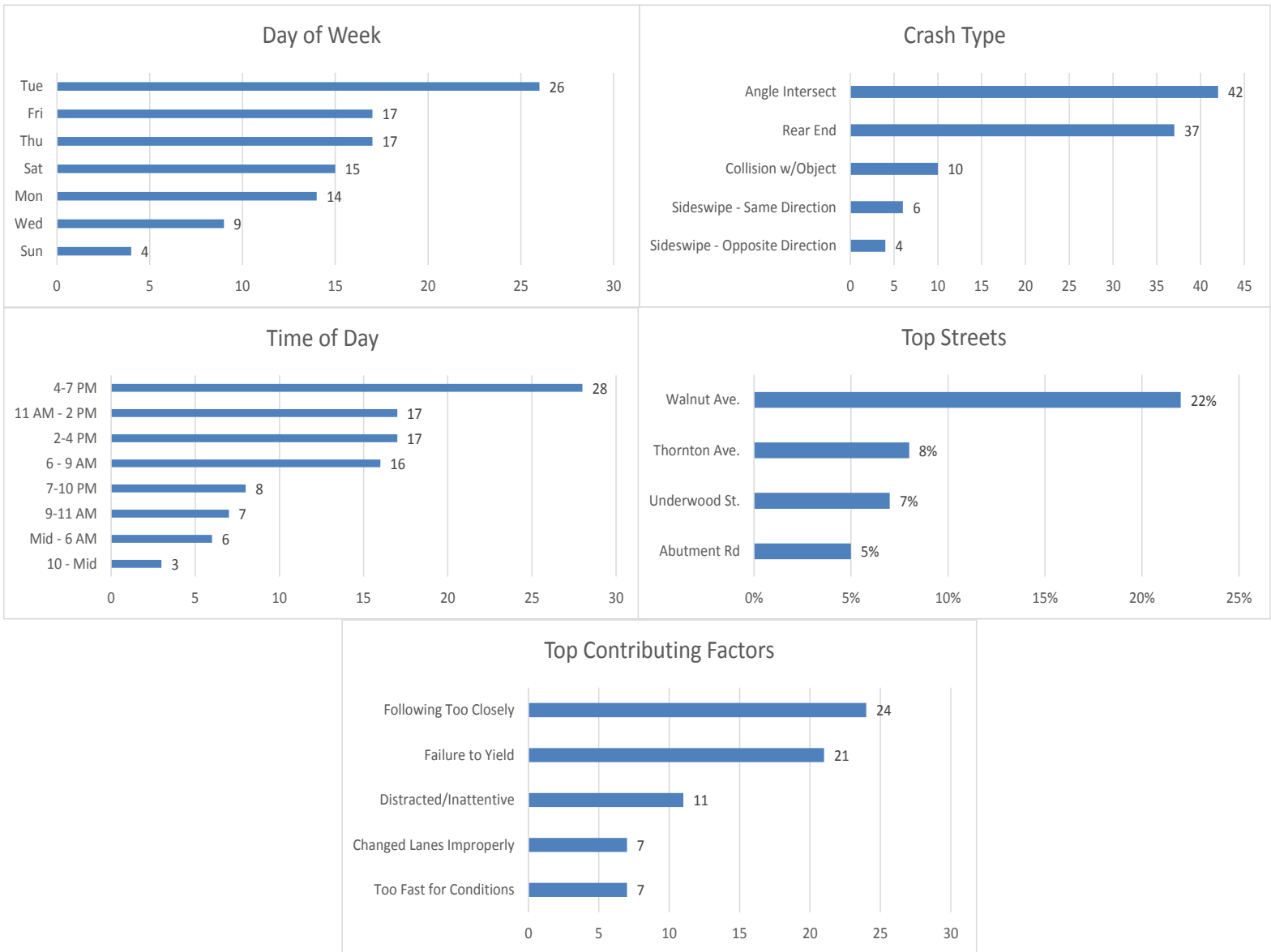


June 2018 Crash Statistics

In June 2018 there were 102 non-private property crashes reported. Total injury crashes and injuries decreased from May 2018. There were two serious injuries reported in June 2018. Angle crashes were the most prevalent during June 2018. Following too closely continues to be the leading contributing factor in crashes, “Too Fast for Conditions” was the top contributing factor for injury crashes at 26.83%. Walnut Ave and Thornton Ave were the roadways where the majority of the crashes occurred. Walnut Ave continues to remain the top street for motor vehicle crashes. Underwood St and Walnut Ave accounted for approximately half of all injuries in June 2018.

See Appendix B for Complete Listing of Reported Crashes



102 Crashes Reported in June

- There were 12 less crashes in June 2018 than in May 2018.
 - 25 Crashes reported in which injuries occurred.
 - That is one injury crash for every 4.1 crashes reported.
 - Multiple injuries were reported in 9 crashes.
- Total Injuries Reported
 - 41 injuries were reported.
 - 2 serious injuries were reported.

Top 5 Streets

- Walnut Avenue
 - 22 Total Crashes
 - 21.57 % of Total Crashes
 - 24.39 % of Injuries Reported (10 Injuries Reported on the Roadway)
- Thornton Avenue
 - 8 Total Crashes
 - 7.84 % of Total Crashes
 - 4.88 % of Injuries Reported (2 Injuries Reported on this Roadway)
- Underwood Street
 - 7 Total Crashes
 - 6.86 % of Total Crashes
 - 24.39 % of Injuries Reported (10 Reported Injuries on the Roadway)
- Abutment Road
 - 5 Total Crashes
 - 4.90 % of Total Crashes
 - 9.76 % of Injuries Reported (4 Reported Injuries on the Roadway)
- Glenwood Avenue
 - 5 Total Crashes
 - 4.90 % of Total Crashes
 - 0 % of Injuries Reported (0 Reported Injuries on the Roadway)

Crashes Involving DUI

- 2 Reported Crashes involving DUI

Crashes Involving Speed

- 8 Reported Crashes involving Speed (Includes Too Fast for Conditions)

Crashes Involving Distracted or Inattentive Driver

- 14 Crashes Reported with Distracted or Inattentive Driver

Crashes Involving Drivers Following One Another Too Closely

- 24 Crashes Reported involving Following Too Closely

Crashes by Type

- Angle Crash 42 / 41.18%
- Rear End 37 / 36.27%
- Non-Vehicle 10 / 9.80%
- Sideswipe – Same Direction 6 / 5.88%
- Sideswipe – Opposite Direction 4 / 3.92%

Days of the Week

- 14 crashes occurred on Mondays
- 26 crashes occurred on Tuesdays
- 9 crashes occurred on Wednesdays
- 17 crashes occurred on Thursdays
- 17 crashes occurred on Fridays
- 15 crashes occurred on Saturdays
- 4 crashes occurred on Sundays

Time of Day

- 0000-0559-6
- 0600-0859-16
- 0900-1059-7
- 1100-1359-17
- 1400-1559-17
- 1600-1859-17
- 1900-2159-8
- 2200-2359-3

Top Contributing Factors

- Following Too Closely: 24 (21.24 % of all crashes)
- Failure to Yield: 21 (18.58 % of all crashes)
- Distracted/Inattentive: 11 (9.73 % of all crashes)
- Changed Lanes Improperly: 7 (6.19 % of all crashes)
- Too Fast for Conditions: 7 (6.19 % of all crashes)

Based on the crash data from May 2018, Selective Enforcement Details were conducted in the following areas in June 2018:

- **Waugh St**
- **Glenwood Ave**
- **Walnut Ave**

There were 3 total Enforcement Details conducted in June 2018, resulting in 32 total violations being identified.

Comparing the crash data compiled and the enforcement activities conducted for the month of June 2018, details will be conducted in July 2018 in the following areas:

- **Walnut Ave**
- **Glenwood Ave**
- **Underwood St**