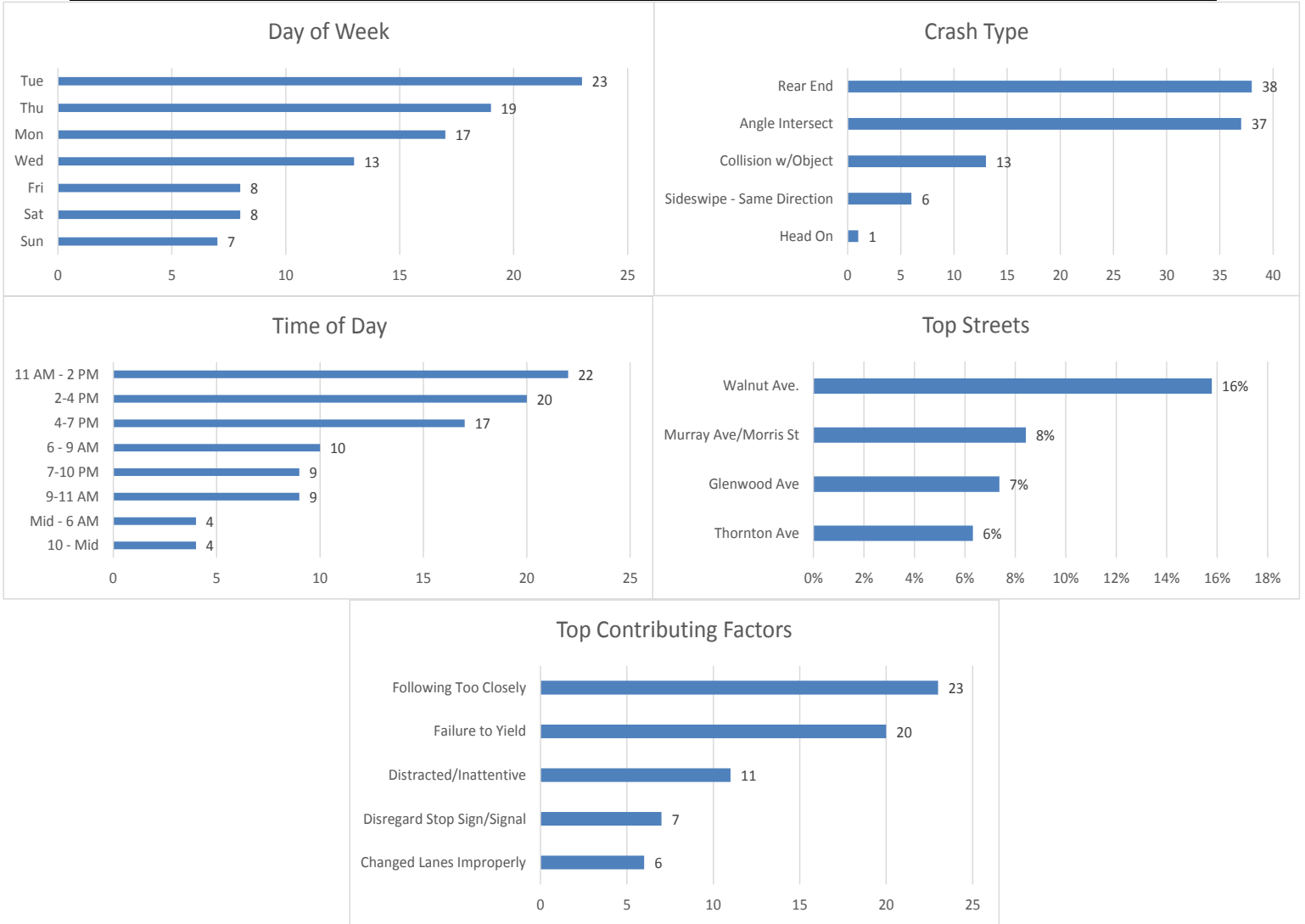


July 2018 Crash Statistics

In July 2018 there were 95 non-private property crashes reported. Total injury crashes and injuries decreased from June 2018. There were no serious injuries reported in July 2018. Rear end crashes were the most prevalent during July 2018. Following too closely continues to be the leading contributing factor in crashes, “Failure to Yield” was the top contributing factor for injury crashes at 28.57%. Walnut Ave and Thornton Ave were the roadways where the majority of the crashes occurred. Walnut Ave continues to remain the top street for motor vehicle crashes. In July 2018, Walnut Ave also had the most injury crashes.

See Appendix B for Complete Listing of Reported Crashes



95 Crashes Reported in July

- There were 7 less crashes in July 2018 than in June 2018.
 - 21 Crashes reported in which injuries occurred.
 - That is one injury crash for every 4.5 crashes reported.
 - Multiple injuries were reported in 2 crashes.

- Total Injuries Reported
 - 24 injuries were reported.
 - 0 serious injuries were reported.

Top 5 Streets

- Walnut Avenue
 - 15 Total Crashes
 - 15.79 % of Total Crashes
 - 16.67 % of Injuries Reported (4 Injuries Reported on the Roadway)
- Murray Avenue/ Morris St
 - 8 Total Crashes
 - 8.42 % of Total Crashes
 - 4.17 % of Injuries Reported (1 Injury Reported on this Roadway)
- Glenwood Ave
 - 7 Total Crashes
 - 7.37 % of Total Crashes
 - 8.33 % of Injuries Reported (2 Reported Injuries on the Roadway)
- Thornton Ave Road
 - 5 Total Crashes
 - 4.90 % of Total Crashes
 - 4.17 % of Injuries Reported (1 Reported Injury on the Roadway)
- N Bypass/Chattanooga Rd
 - 5 Total Crashes
 - 5.26 % of Total Crashes
 - 8.33 % of Injuries Reported (2 Reported Injuries on the Roadway)

Crashes Involving DUI

- 0 Reported Crashes involving DUI

Crashes Involving Speed

- 3 Reported Crashes involving Speed (Includes Too Fast for Conditions)

Crashes Involving Distracted or Inattentive Driver

- 11 Crashes Reported with Distracted or Inattentive Driver

Crashes Involving Drivers Following One Another Too Closely

- 23 Crashes Reported involving Following Too Closely

Crashes by Type

- Rear End 38 / 40.00%
- Angle Crash 37 / 38.95%
- Non-Vehicle 13 / 13.68%
- Sideswipe – Same Direction 6 / 6.32%
- Head On 1 / 1.05%

Days of the Week

- 17 crashes occurred on Mondays
- 23 crashes occurred on Tuesdays
- 13 crashes occurred on Wednesdays
- 19 crashes occurred on Thursdays
- 8 crashes occurred on Fridays
- 8 crashes occurred on Saturdays
- 7 crashes occurred on Sundays

Time of Day

- 0000-0559-4
- 0600-0859-10
- 0900-1059-9
- 1100-1359-22
- 1400-1559-20
- 1600-1859-17
- 1900-2159-9
- 2200-2359-4

Top Contributing Factors

- Following Too Closely: 23 (24.21 % of all crashes)
- Failure to Yield: 20 (21.05 % of all crashes)
- Distracted/Inattentive: 11 (11.58 % of all crashes)
- Disregard Stop Sign/Signal: 7 (7.37 % of all crashes)
- Changed Lanes Improperly: 6 (6.32 % of all crashes)

Based on the crash data from June 2018, Selective Enforcement Details were conducted in the following areas in July 2018:

- **Waugh St**
- **Glenwood Ave**
- **Walnut Ave**

There were 15 total Enforcement Details conducted in July 2018, resulting in 143 total violations being identified.

Comparing the crash data compiled and the enforcement activities conducted for the month of July 2018, details will be conducted in August 2018 in the following areas:

- **Walnut Ave**
- **Glenwood Ave**
- **Murray Ave/Morris St**