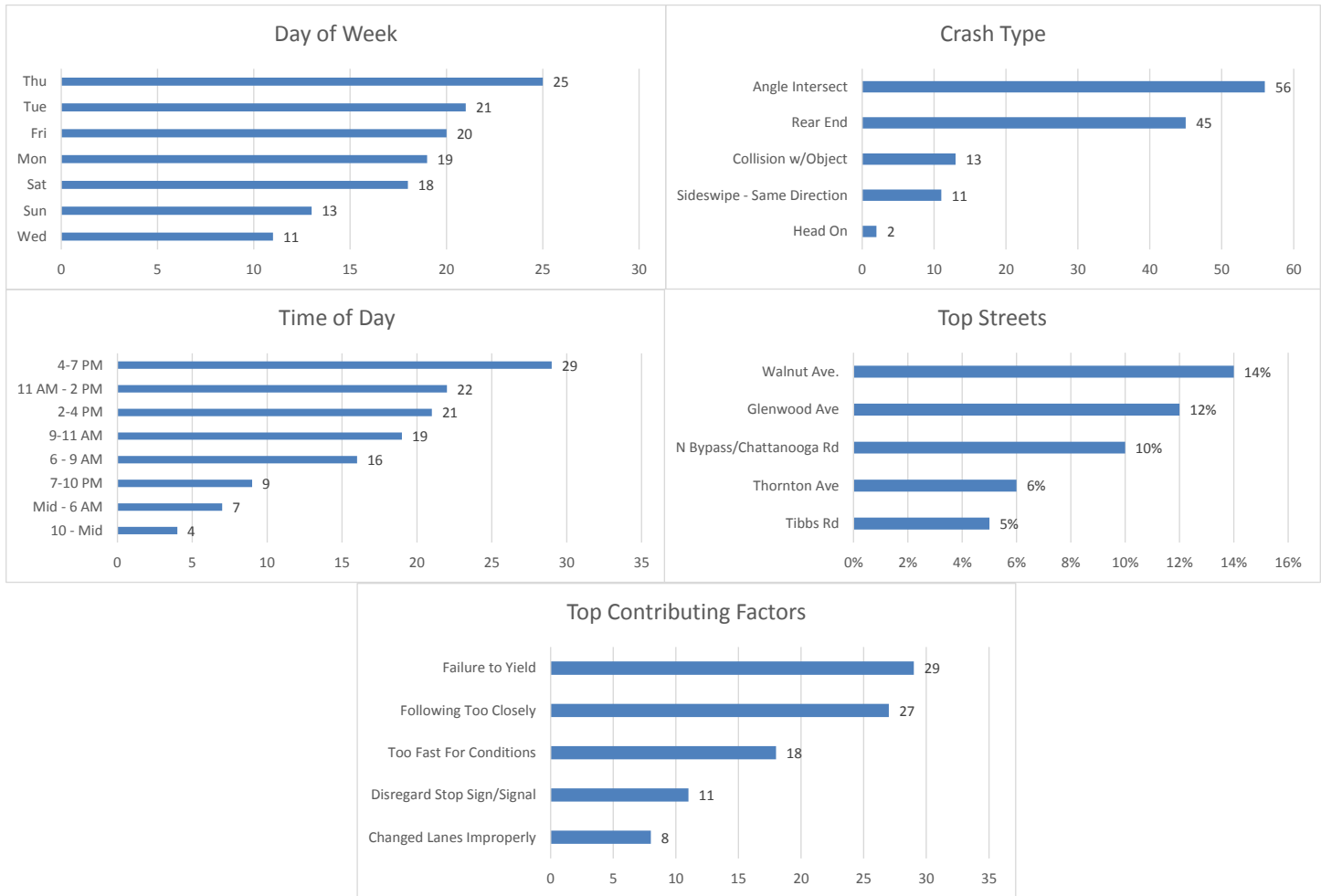


December 2018 Crash Statistics

In December 2018 there were 127 non-private property crashes reported. Injury crashes and injuries increased from November 2018. There was one serious injury reported in December 2018. Rear end and angle crashes were the most prevalent during December 2018. Failure to yield was the leading contributing factor in both injury and non-injury crashes. Walnut Ave and Chattanooga Rd were the roadways where the majority of the crashes occurred. In December 2018 approximately 14% of all crashes in the city occurred on Walnut Ave. In December 2018, Chattanooga Rd/Bypass and Walnut Ave were the roadways with the most injury crashes.



127 Crashes Reported in December 2018

- There were 3 less crashes in December 2018 than in November 2018.
 - 27 Crashes reported in which injuries occurred.
 - That is one injury crash for every 4.70 crashes reported.
 - Multiple injuries were reported in 5 crashes.

- Total Injuries Reported
 - 39 injuries were reported.
 - 1 serious injury was reported.

Top 5 Streets

- Walnut Avenue
 - 18 Total Crashes
 - 14.17 % of Total Crashes
 - 23.08 % of Injuries Reported (9 Injuries Reported on the Roadway)

- Glenwood Ave
 - 15 Total Crashes
 - 11.81 % of Total Crashes
 - 17.95 % of Injuries Reported (9 Injuries Reported on this Roadway)

- N Bypass/Chattanooga Rd
 - 13 Total Crashes
 - 10.24 % of Total Crashes
 - 23.08 % of Injuries Reported (9 Injuries Reported on this Roadway)

- Thornton Ave
 - 7 Total Crashes
 - 5.51 % of Total Crashes
 - 7.69 % of Injuries Reported (3 Injuries Reported on the Roadway)

- Tibbs Rd
 - 6 Total Crashes
 - 4.72 % of Total Crashes
 - 2.56 % of Injuries Reported (1 Injury Reported on the Roadway)

Crashes Involving DUI

- 4 Reported Crashes involving DUI

Crashes Involving Speed

- 18 Reported Crashes involving Speed (Includes Too Fast for Conditions)

Crashes Involving Distracted or Inattentive Driver

- 9 Crashes Reported with Distracted or Inattentive Driver

Crashes Involving Drivers Following One Another Too Closely

- 27 Crashes Reported involving Following Too Closely

Crashes by Type

- Angle Crash 56 / 44.09%
- Rear End 45 / 35.43%
- Non-Vehicle 13 / 10.24%

- Sideswipe – Same Direction 11 / 8.66%
- Head On 2 / 1.57%

Days of the Week

- 19 crashes occurred on Mondays
- 21 crashes occurred on Tuesdays
- 11 crashes occurred on Wednesdays
- 25 crashes occurred on Thursdays
- 20 crashes occurred on Fridays
- 18 crashes occurred on Saturdays
- 13 crashes occurred on Sundays

Time of Day

- 0000-0559-7
- 0600-0859-16
- 0900-1059-19
- 1100-1359-22
- 1400-1559-21
- 1600-1859-29
- 1900-2159-9
- 2200-2359-4

Top Contributing Factors

- Failure to Yield: 29 (22.83 % of all crashes)
- Following Too Closely: 27 (21.26 % of all crashes)
- Too Fast for Conditions: 18 (14.17 % of all crashes)
- Disregard Stop Sign/Signal: 11 (8.66 % of all crashes)
- Changed Lanes Improperly: 8 (6.30 % of all crashes)

Based on the crash data from November 2018, Selective Enforcement Details were conducted in the following areas in December 2018:

- **Thornton Ave**
- **M L King Jr Blvd**
- **Walnut Ave**

There were 4 total Enforcement Details conducted in December 2018, resulting in 51 total violations being identified.

Comparing the crash data compiled and the enforcement activities conducted for the month of December 2018, details will be conducted in December 2018 in the following areas:

- **Walnut Ave**
- **Glenwood Ave**
- **N Bypass/Chattanooga Rd**