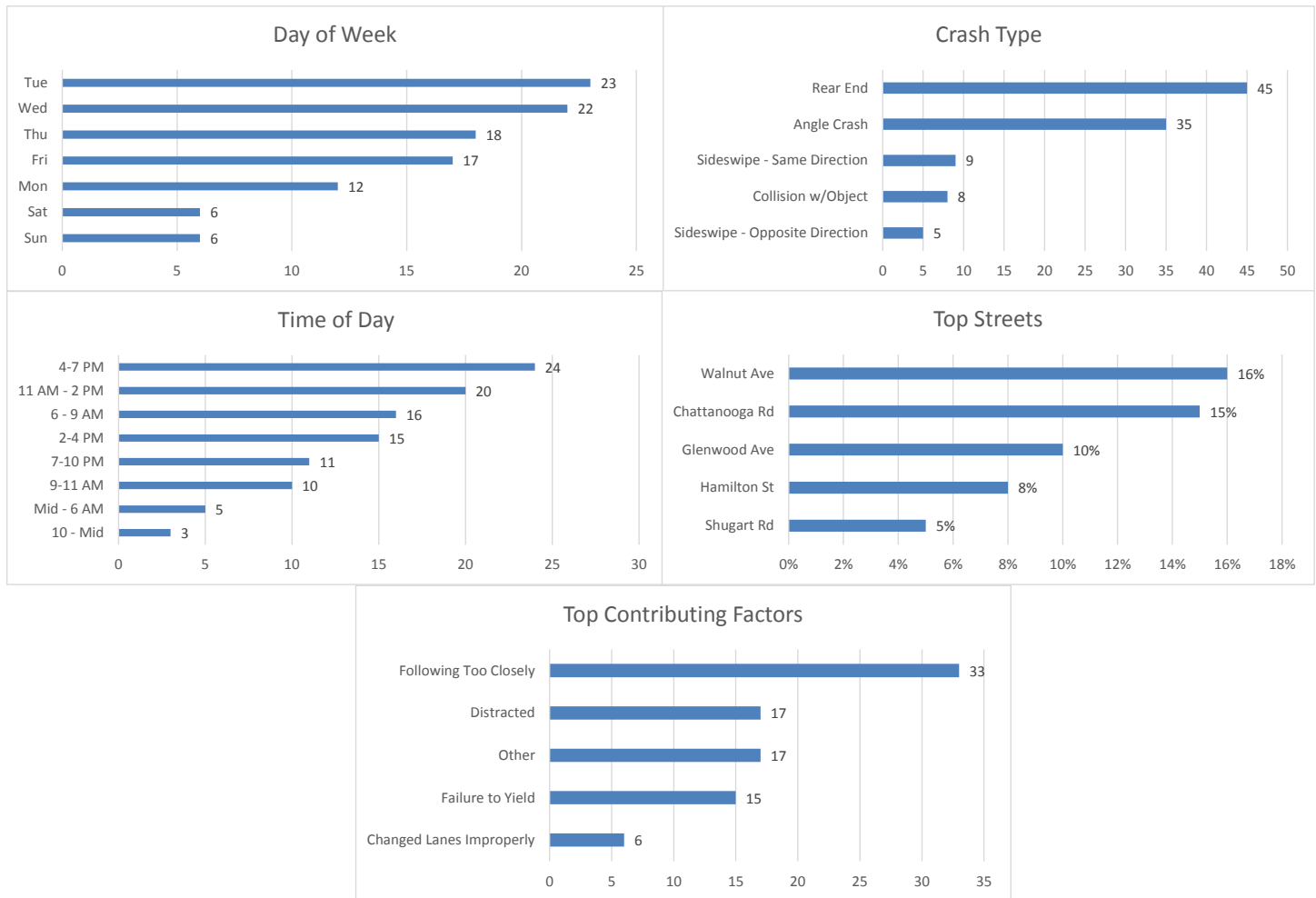


September 2019 Crash Statistics

In September 2019 there were 104 non-private property crashes reported. There was one traffic fatality in September 2019. Injury crashes and injuries increased from August 2019. Rear end and angle crashes were the most prevalent during September 2019. Following too close was the leading contributing factor in non-injury crashes. Failure to yield was the leading contributing factor for injury crashes. Chattanooga Rd and Walnut Ave were the roadways where the majority of the crashes occurred. In September 2019 approximately 16.35% of all crashes in the city occurred on Walnut Ave. In September 2019, Chattanooga Rd was the roadway with the most injury crashes.



104 Crashes Reported in September 2019

- There were 21 less crashes in September 2019 than there were in August 2019.
 - 29 Crashes reported in which injuries occurred.
 - That is one injury crash for every 3.59 crashes reported.
 - Multiple injuries were reported in 6 crashes.

- Total Injuries Reported
 - 33 injuries were reported.
 - 2 serious injury were reported.
 - 1 fatality was reported.

Top 5 Streets

- Walnut Ave
 - 17 Total Crashes
 - 16.35% of Total Crashes
 - 11.43% of Injuries Reported (4 Injuries Reported on the Roadway)

- Chattanooga Rd / N Bypass
 - 16 Total Crashes
 - 15.38% of Total Crashes
 - 14.29% of Injuries Reported (5 Injuries Reported on this Roadway)

- Glenwood Ave
 - 10 Total Crashes
 - 9.62% of Total Crashes
 - 11.43% of Injuries Reported (4 Injuries Reported on this Roadway)

- Hamilton St
 - 8 Total Crashes
 - 7.69% of Total Crashes
 - 11.43% of Injuries Reported (4 Injuries Reported on the Roadway)

- Shugart Rd
 - 5 Total Crashes
 - 4.81% of Total Crashes
 - 2.86% of Injuries Reported (1 Injuries Reported on the Roadway)

Crashes Involving DUI

- 1 Reported Crashes involving DUI

Crashes Involving Speed

- 3 Reported Crashes involving Speed (Includes Too Fast for Conditions)

Crashes Involving Distracted or Inattentive Driver

- 17 Crashes Reported with Distracted or Inattentive Driver

Crashes Involving Drivers Following One Another Too Closely

- 33 Crashes Reported involving Following Too Closely

Crashes by Type

- Rear End 45 / 43.27%
- Angle Crash 35 / 33.65%
- Sideswipe – Same Direction 9 / 8.65%

- Collision with Object 8 / 7.69%
- Sideswipe – Opposite Direction 5 / 4.81%

Days of the Week

- 12 crashes occurred on Mondays
- 23 crashes occurred on Tuesdays
- 22 crashes occurred on Wednesdays
- 18 crashes occurred on Thursdays
- 17 crashes occurred on Fridays
- 6 crashes occurred on Saturdays
- 6 crashes occurred on Sundays

Time of Day

- 0000-0559-5
- 0600-0859-16
- 0900-1059-10
- 1100-1359-20
- 1400-1559-15
- 1600-1859-24
- 1900-2159-11
- 2200-2359-3

Top Contributing Factors

- Following Too Closely: 33 (31.73 % of all crashes)
- Distracted: 17 (16.35 % of all crashes)
- Other: 17 (16.35 % of all crashes)
- Failure to Yield: 15 (14.42 % of all crashes)
- Changed Lanes Improperly: 6 (5.77 % of all crashes)

Based on the crash data from August 2019, Selective Enforcement Details were conducted in the following areas in September 2019:

- **Walnut Ave**

There was 1 total Enforcement Detail conducted in September 2019, resulting in 11 total violations being identified.

Comparing the crash data compiled and the enforcement activities conducted for the month of September 2019, details will be conducted in October 2019 in the following areas:

- **Chattanooga Rd**
- **Walnut Ave**
- **Glenwood Ave**