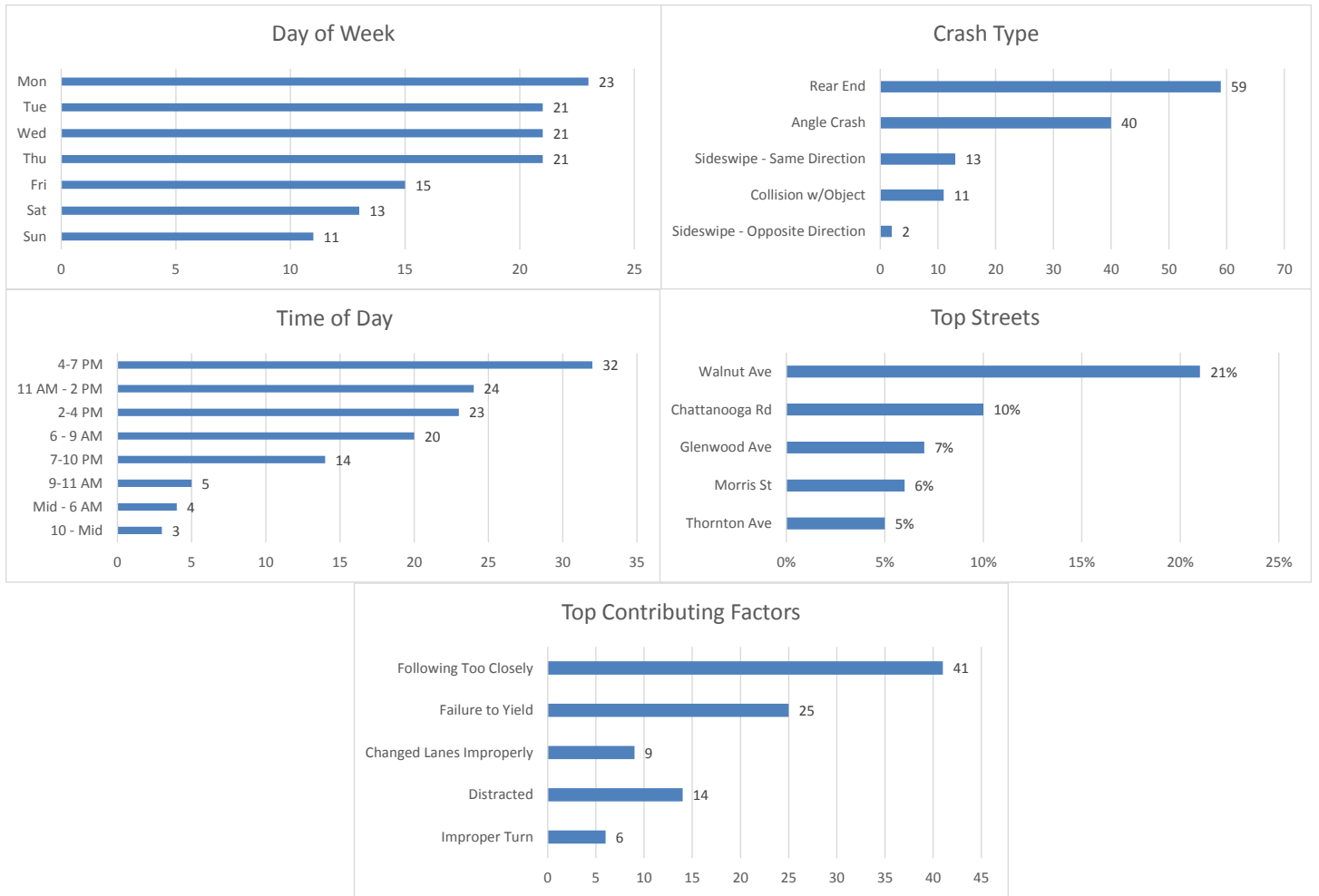


August 2019 Crash Statistics

In August 2019 there were 125 non-private property crashes reported. Injury crashes and injuries increased from July 2019. Rear end and angle crashes were the most prevalent during August 2019. Following too close was the leading contributing factor in non-injury crashes. Following too closely and failure to yield was the leading contributing factor for injury crashes. Chattanooga Rd and Walnut Ave were the roadways where the majority of the crashes occurred. In August 2019 approximately 20.80% of all crashes in the city occurred on Walnut Ave. In August 2019, Walnut Ave was the roadway with the most injury crashes.



125 Crashes Reported in August 2019

- There were 35 more crashes in August 2019 than there were in July 2019.
 - 19 Crashes reported in which injuries occurred.
 - That is one injury crash for every 6.58 crashes reported.
 - Multiple injuries were reported in 3 crashes.

- Total Injuries Reported
 - 23 injuries were reported.
 - 1 serious injury was reported.
 - 0 fatalities were reported.

Top 5 Streets

- Walnut Ave
 - 26 Total Crashes
 - 20.80% of Total Crashes
 - 30.43% of Injuries Reported (7 Injuries Reported on the Roadway)
- Chattanooga Rd / N Bypass
 - 13 Total Crashes
 - 10.40% of Total Crashes
 - 8.70% of Injuries Reported (2 Injuries Reported on this Roadway)
- Glenwood Ave
 - 9 Total Crashes
 - 7.20% of Total Crashes
 - 21.74% of Injuries Reported (5 Injuries Reported on this Roadway)
- Morris St
 - 7 Total Crashes
 - 5.60% of Total Crashes
 - 8.70% of Injuries Reported (2 Injuries Reported on the Roadway)
- Thornton Ave
 - 6 Total Crashes
 - 4.80% of Total Crashes
 - 4.35% of Injuries Reported (1 Injuries Reported on the Roadway)

Crashes Involving DUI

- 5 Reported Crashes involving DUI

Crashes Involving Speed

- 5 Reported Crashes involving Speed (Includes Too Fast for Conditions)

Crashes Involving Distracted or Inattentive Driver

- 14 Crashes Reported with Distracted or Inattentive Driver

Crashes Involving Drivers Following One Another Too Closely

- 41 Crashes Reported involving Following Too Closely

Crashes by Type

- Rear End 59 / 47.20%
- Angle Crash 40 / 32.00%
- Sideswipe – Same Direction 13 / 10.40%

- Collision with Object 11 / 8.80%
- Head On – 2 / 1.60%

Days of the Week

- 23 crashes occurred on Mondays
- 21 crashes occurred on Tuesdays
- 21 crashes occurred on Wednesdays
- 21 crashes occurred on Thursdays
- 15 crashes occurred on Fridays
- 13 crashes occurred on Saturdays
- 11 crashes occurred on Sundays

Time of Day

- 0000- 0559-4
- 0600-0859-20
- 0900-1059-5
- 1100-1359-24
- 1400-1559-23
- 1600-1859-32
- 1900-2159-14
- 2200-2359-3

Top Contributing Factors

- Following Too Closely: 41 (32.80 % of all crashes)
- Failure to Yield: 25 (20.00 % of all crashes)
- Distracted: 14 (11.20 % of all crashes)
- Changed Lanes Improperly: 9 (7.20 % of all crashes)
- Improper Turn: 6 (4.80 % of all crashes)

Based on the crash data from July 2019, Selective Enforcement Details were conducted in the following areas in August 2019:

- **Walnut Ave**
- **Glenwood Ave**
- **Thornton Ave**

There were 10 total Enforcement Details conducted in August 2019, resulting in 113 total violations being identified.

Comparing the crash data compiled and the enforcement activities conducted for the month of August 2019, details will be conducted in September 2019 in the following areas:

- **Chattanooga Rd**
- **Walnut Ave**
- **Glenwood Ave**

