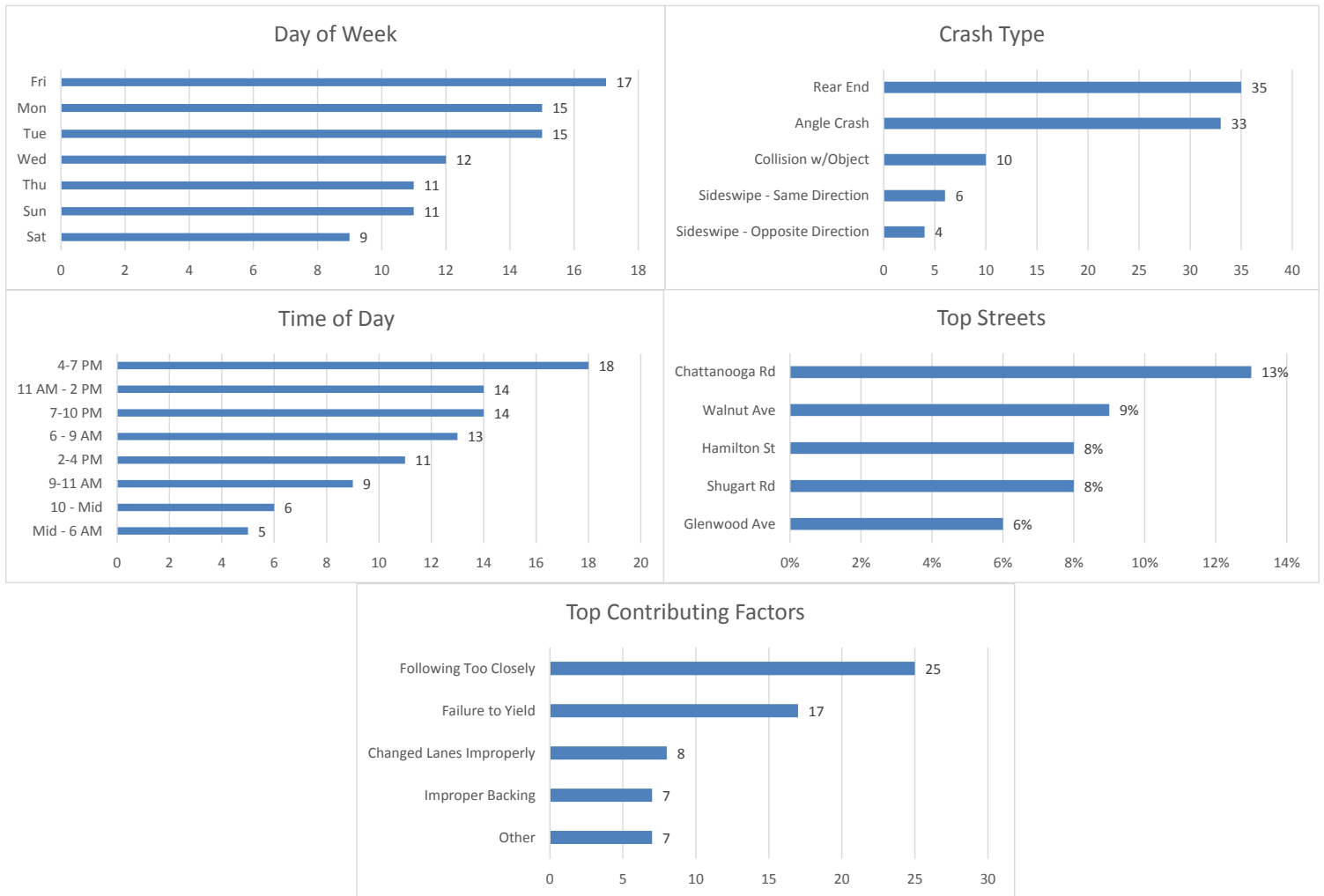


July 2019 Crash Statistics

In July 2019 there were 90 non-private property crashes reported. Injury crashes and injuries decreased from June 2019. Rear end and angle crashes were the most prevalent during July 2019. Following too close was the leading contributing factor in non-injury crashes. Following too closely and failure to yield was the leading contributing factor for injury crashes. Chattanooga Rd and Walnut Ave were the roadways where the majority of the crashes occurred. In July 2019 approximately 13.33% of all crashes in the city occurred on Chattanooga Rd. In July 2019, Glenwood Ave was the roadway with the most injury crashes.



90 Crashes Reported in July 2019

- There were 6 less crashes in July 2019 than there were in June 2019.
 - 15 Crashes reported in which injuries occurred.
 - That is one injury crash for every 6 crashes reported.
 - Multiple injuries were reported in 4 crashes.

- Total Injuries Reported
 - 19 injuries were reported.
 - 0 serious injuries were reported.
 - 0 fatalities were reported.

Top 5 Streets

- Chattanooga Rd/N Bypass
 - 12 Total Crashes
 - 13.33% of Total Crashes
 - 5.26% of Injuries Reported (1 Injury Reported on the Roadway)
- Walnut Ave
 - 8 Total Crashes
 - 8.89% of Total Crashes
 - 15.79% of Injuries Reported (3 Injuries Reported on this Roadway)
- Hamilton St
 - 7 Total Crashes
 - 7.78% of Total Crashes
 - 0% of Injuries Reported (0 Injuries Reported on this Roadway)
- Shugart Rd
 - 7 Total Crashes
 - 7.78% of Total Crashes
 - 10.53% of Injuries Reported (2 Injuries Reported on the Roadway)
- Glenwood Ave
 - 5 Total Crashes
 - 5.56% of Total Crashes
 - 21.05% of Injuries Reported (4 Injuries Reported on the Roadway)

Crashes Involving DUI

- 4 Reported Crashes involving DUI

Crashes Involving Speed

- 3 Reported Crashes involving Speed (Includes Too Fast for Conditions)

Crashes Involving Distracted or Inattentive Driver

- 7 Crashes Reported with Distracted or Inattentive Driver

Crashes Involving Drivers Following One Another Too Closely

- 27 Crashes Reported involving Following Too Closely

Crashes by Type

- Rear End 35 / 38.89%
- Angle Crash 33 / 36.67%
- Non-Vehicle 10 / 11.11%

- Sideswipe – Same Direction 6 / 6.67%
- Sideswipe – Opposite Direction 4 / 4.44%
- Head On – 2 / 2.22%

Days of the Week

- 15 crashes occurred on Mondays
- 15 crashes occurred on Tuesdays
- 12 crashes occurred on Wednesdays
- 11 crashes occurred on Thursdays
- 17 crashes occurred on Fridays
- 9 crashes occurred on Saturdays
- 11 crashes occurred on Sundays

Time of Day

- 0000-0559-5
- 0600-0859-13
- 0900-1059-9
- 1100-1359-14
- 1400-1559-11
- 1600-1859-18
- 1900-2159-14
- 2200-2359-6

Top Contributing Factors

- Following Too Closely: 25 (27.78 % of all crashes)
- Failure to Yield: 17 (18.89 % of all crashes)
- Changed Lanes Improperly: 8 (8.89 % of all crashes)
- Improper Backing: 7 (7.78 % of all crashes)
- Other: 7 (7.78 % of all crashes)

Based on the crash data from June 2019, Selective Enforcement Details were conducted in the following areas in July 2019:

- **Walnut Ave**
- **Glenwood Ave**

There were 11 total Enforcement Details conducted in July 2019, resulting in 122 total violations being identified.

Comparing the crash data compiled and the enforcement activities conducted for the month of July 2019, details will be conducted in August 2019 in the following areas:

- **Chattanooga Rd**
- **Walnut Ave**
- **Glenwood Ave**