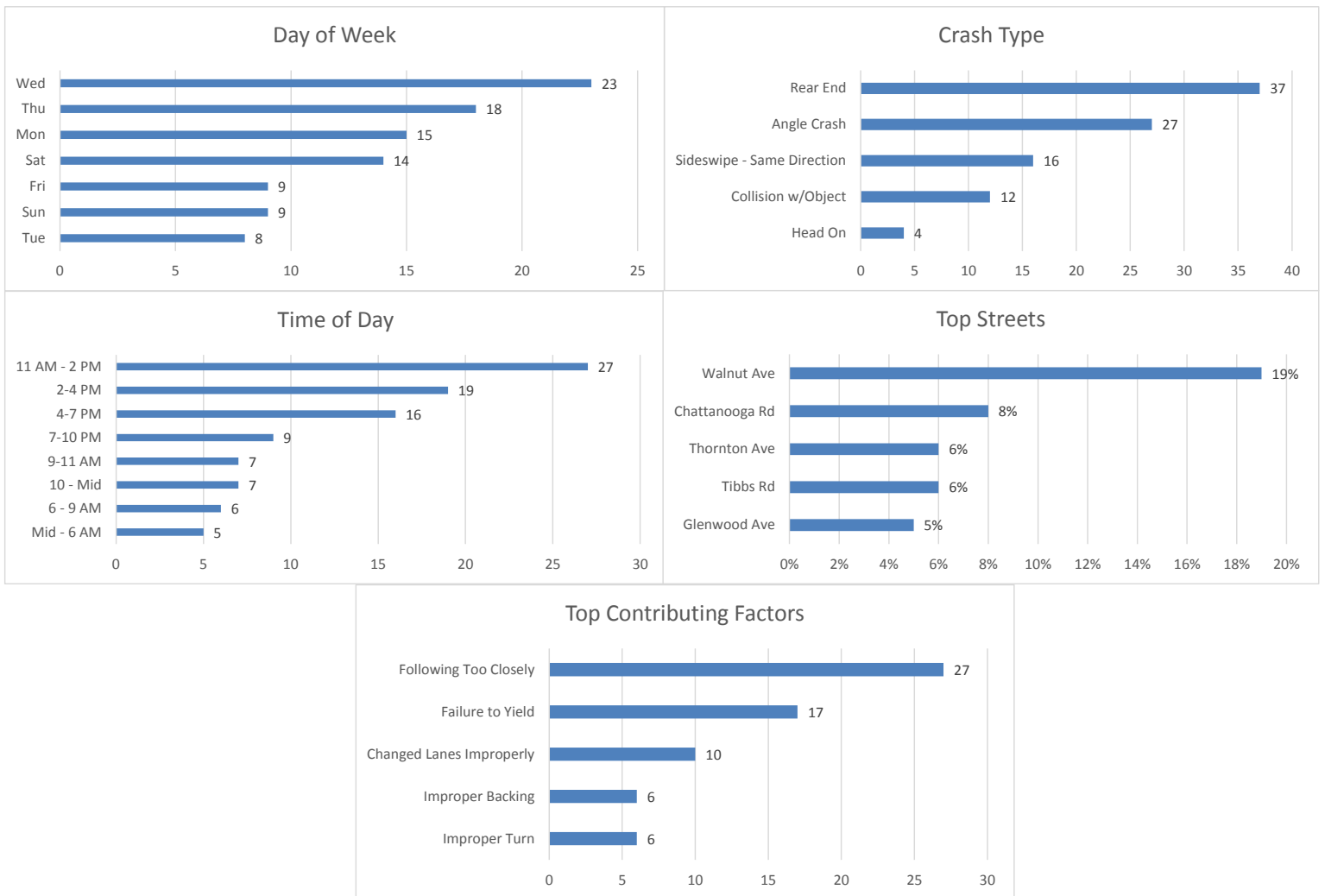


## June 2019 Crash Statistics

In June 2019 there were 96 non-private property crashes reported. Injury crashes and injuries decreased from June 2019. Rear end and angle crashes were the most prevalent during June 2019. Following too close was the leading contributing factor in non-injury crashes. Failure to yield was the leading contributing factor for injury crashes. Walnut Ave and Chattanooga Rd were the roadways where the majority of the crashes occurred. In June 2019 approximately 19.23% of all crashes in the city occurred on Walnut Ave. In June 2019, Walnut Ave and Chattanooga Rd were the roadways with the most injury crashes.



### 96 Crashes Reported in June 2019

- There were 9 less crashes in June 2019 than there were in May 2019.
  - 18 Crashes reported in which injuries occurred.
  - That is one injury crash for every 5.3 crashes reported.
  - Multiple injuries were reported in 4 crashes.

- Total Injuries Reported
  - 26 injuries were reported.
  - 0 serious injuries were reported.
  - 0 fatalities were reported.

#### Top 5 Streets

- Walnut Avenue
  - 18 Total Crashes
  - 18.75% of Total Crashes
  - 19.23% of Injuries Reported (5 Injuries Reported on the Roadway)
  
- Chattanooga Rd/N Bypass
  - 8 Total Crashes
  - 8.33% of Total Crashes
  - 7.69% of Injuries Reported (2 Injuries Reported on this Roadway)
  
- Thornton Ave
  - 6 Total Crashes
  - 6.25% of Total Crashes
  - 7.69% of Injuries Reported (2 Injuries Reported on this Roadway)
  
- Tibbs Rd
  - 6 Total Crashes
  - 6.25% of Total Crashes
  - 0% of Injuries Reported (01 Injury Reported on the Roadway)
  
- Glenwood Ave
  - 5 Total Crashes
  - 5.21% of Total Crashes
  - 7.69% of Injuries Reported (2 Injury Reported on the Roadway)

#### Crashes Involving DUI

- 2 Reported Crashes involving DUI

#### Crashes Involving Speed

- 5 Reported Crashes involving Speed (Includes Too Fast for Conditions)

#### Crashes Involving Distracted or Inattentive Driver

- 9 Crashes Reported with Distracted or Inattentive Driver

### Crashes Involving Drivers Following One Another Too Closely

- 27 Crashes Reported involving Following Too Closely

### Crashes by Type

- Rear End 48 / 38.10%
- Angle Crash 45 / 35.71%
- Sideswipe – Same Direction 17 / 13.49%
- Non-Vehicle 9 / 7.14%
- Head On 4 / 3.17%

### Days of the Week

- 15 crashes occurred on Mondays
- 8 crashes occurred on Tuesdays
- 23 crashes occurred on Wednesdays
- 18 crashes occurred on Thursdays
- 9 crashes occurred on Fridays
- 14 crashes occurred on Saturdays
- 9 crashes occurred on Sundays

### Time of Day

- 0000- 0559-5
- 0600-0859-6
- 0900-1059-7
- 1100-1359-27
- 1400-1559-19
- 1600-1859-16
- 1900-2159-9
- 2200-2359-7

### Top Contributing Factors

- Following Too Closely: 27 (28.13 % of all crashes)
- Failure to Yield: 17 (17.71 % of all crashes)
- Changed Lanes Improperly: 10 (10.42 % of all crashes)
- Improper Backing: 6 (6.25 % of all crashes)
- Improper Turn: 6 (6.25 % of all crashes)

Based on the crash data from May 2019, Selective Enforcement Details were conducted in the following areas in June 2019:

- **Thornton Ave**
- **Walnut Ave**

There were 4 total Enforcement Details conducted in June 2019, resulting in 45 total violations being identified.

Comparing the crash data compiled and the enforcement activities conducted for the month of June 2019, details will be conducted in July 2019 in the following areas:

- **Glenwood Ave**
- **Chattanooga Rd**
- **Walnut Ave**