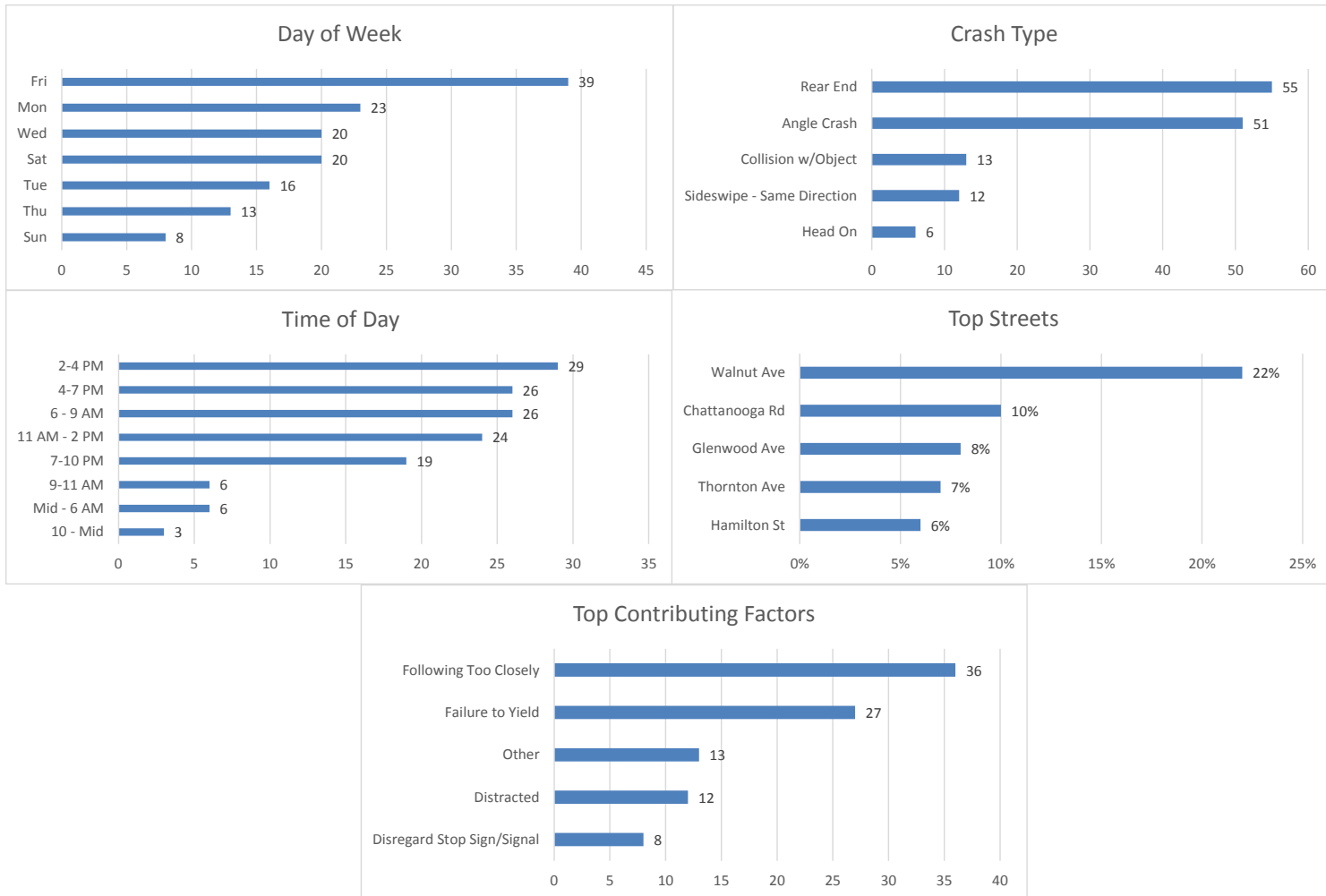


March 2019 Crash Statistics

In March 2019 there were 139 non-private property crashes reported. Injury crashes and injuries increased from February 2019. There was one serious injury reported in March 2019. Rear end and angle crashes were the most prevalent during March 2019. Following too close was the leading contributing factor in non-injury crashes. Following too close was the leading contributing factor for injury crashes. Walnut Ave and Chattanooga Rd were the roadways where the majority of the crashes occurred. In March 2019 approximately 22% of all crashes in the city occurred on Walnut Ave. In March 2019,



Walnut Ave and Glenwood Ave were the roadways with the most injury crashes.

139 Crashes Reported in March 2019

- There were 24 more crashes in March 2019 than in February 2019.
 - 30 Crashes reported in which injuries occurred.
 - That is one injury crash for every 4.6 crashes reported.
 - Multiple injuries were reported in 8 crashes.

- Total Injuries Reported
 - 43 injuries were reported.
 - 1 serious injury was reported.
 - 1 fatality was reported.

Top 5 Streets

- Walnut Avenue
 - 30 Total Crashes
 - 21.58 % of Total Crashes
 - 20.93 % of Injuries Reported (9 Injuries Reported on the Roadway)

- Chattanooga Rd/N Bypass
 - 14 Total Crashes
 - 10.07 % of Total Crashes
 - 9.30 % of Injuries Reported (4 Injuries Reported on this Roadway)

- Glenwood Ave
 - 11 Total Crashes
 - 7.91 % of Total Crashes
 - 11.63 % of Injuries Reported (5 Injuries Reported on this Roadway)

- Thornton Ave
 - 10 Total Crashes
 - 7.19 % of Total Crashes
 - 2.33 % of Injuries Reported (1 Injuries Reported on the Roadway)

- Hamilton St
 - 9 Total Crashes
 - 6.47 % of Total Crashes
 - 6.98 % of Injuries Reported (3 Injuries Reported on the Roadway)

Crashes Involving DUI

- 4 Reported Crashes involving DUI

Crashes Involving Speed

- 6 Reported Crashes involving Speed (Includes Too Fast for Conditions)

Crashes Involving Distracted or Inattentive Driver

- 19 Crashes Reported with Distracted or Inattentive Driver

Crashes Involving Drivers Following One Another Too Closely

- 36 Crashes Reported involving Following Too Closely

Crashes by Type

- Rear End 55 / 39.57%
- Angle Crash 51 / 36.69%
- Non-Vehicle 13 / 9.35%
- Sideswipe – Same Direction 12 / 8.63%
- Head On 6 / 4.32%
- Sideswipe – Opposite Direction 2 / 1.44%

Days of the Week

- 23 crashes occurred on Mondays
- 16 crashes occurred on Tuesdays
- 20 crashes occurred on Wednesdays
- 13 crashes occurred on Thursdays
- 39 crashes occurred on Fridays
- 20 crashes occurred on Saturdays
- 8 crashes occurred on Sundays

Time of Day

- 0000- 0559-6
- 0600-0859-26
- 0900-1059-6
- 1100-1359-24
- 1400-1559-29
- 1600-1859-26
- 1900-2159-19
- 2200-2359-3

Top Contributing Factors

- Following Too Closely: 36 (25.90 % of all crashes)
- Failure to Yield: 27 (19.42 % of all crashes)
- Other: 13 (9.35 % of all crashes)
- Distracted: 12 (8.63 % of all crashes)
- Disregard Stop Sign/Signal: 8 (5.76 % of all crashes)

Based on the crash data from February 2019, Selective Enforcement Details were conducted in the following areas in March 2019:

- **Glenwood Ave**
- **Dug Gap Rd**
- **Abutment Rd**

There were 7 total Enforcement Details conducted in March 2019, resulting in 62 total violations being identified.

Comparing the crash data compiled and the enforcement activities conducted for the month of March 2019, details will be conducted in April 2019 in the following areas:

- **Glenwood Ave**
- **Chattanooga Rd**
- **Walnut Ave**