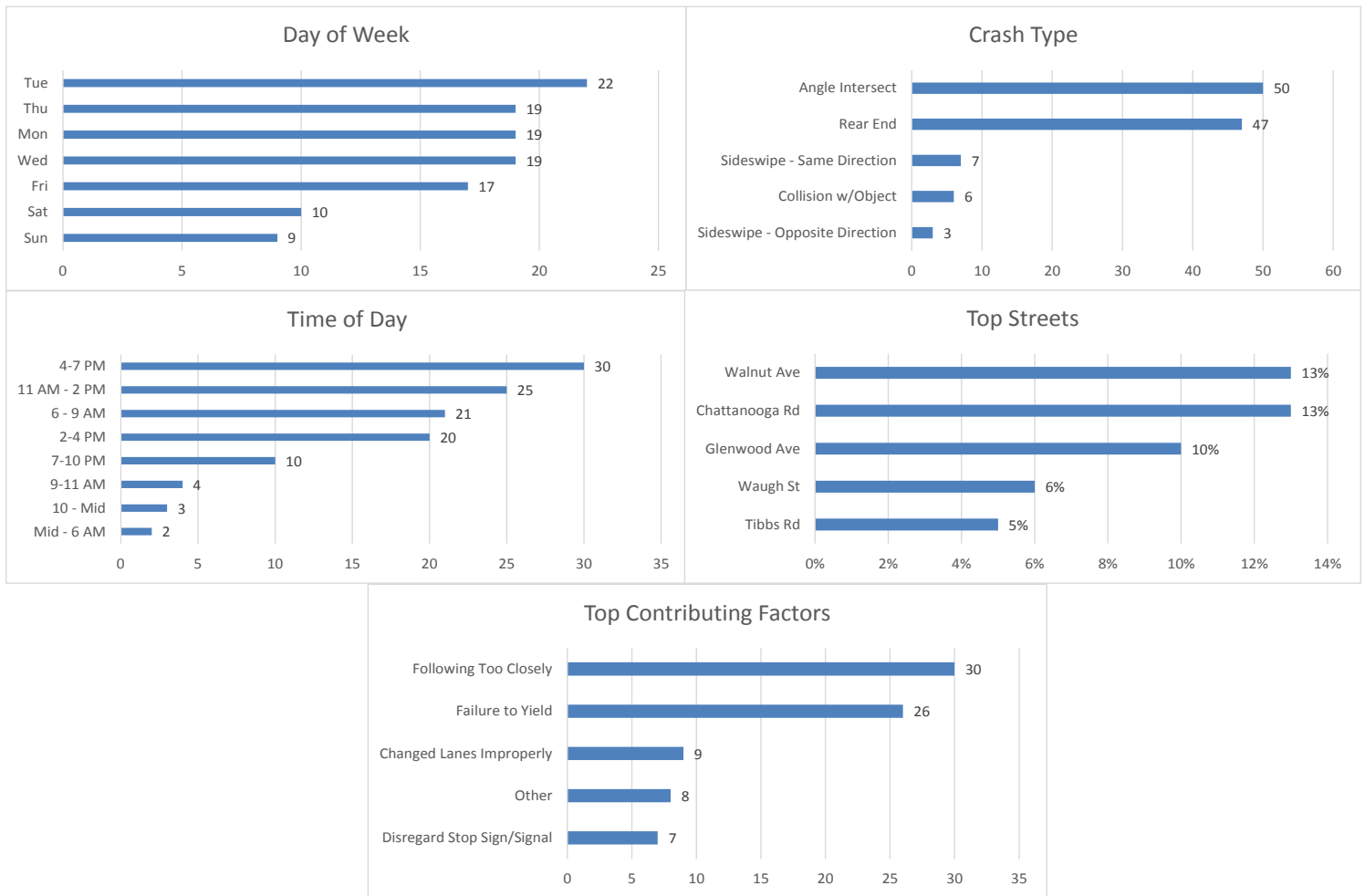


**DALTON POLICE DEPARTMENT
PUBLIC SAFETY COMMISSION MEETING
MARCH 26, 2019**

February 2019 Crash Statistics

In February 2019 there were 115 non-private property crashes reported. Injury crashes and injuries increased from January 2019. There were no serious injuries reported in February 2019. Rear end and angle crashes were the most prevalent during February 2019. Following too close was the leading contributing factor in non-injury crashes. Failure to yield was the leading contributing factor for injury crashes. Walnut Ave and Chattanooga Rd were the roadways where the majority of the crashes occurred. In February 2019 approximately 13% of all crashes in the city occurred on Walnut Ave. In February 2019, Chattanooga Rd and Walnut Ave were the roadways with the most injury crashes.



115 Crashes Reported in February 2019

- There were 3 more crashes in February 2019 than in January 2019.
 - 25 Crashes reported in which injuries occurred.
 - That is one injury crash for every 4.6 crashes reported.
 - Multiple injuries were reported in 8 crashes.

- Total Injuries Reported
 - 34 injuries were reported.
 - 0 serious injuries were reported.

DALTON POLICE DEPARTMENT
PUBLIC SAFETY COMMISSION MEETING
MARCH 26, 2019

Top 5 Streets

- Walnut Avenue
 - 15 Total Crashes
 - 13.04 % of Total Crashes
 - 14.71 % of Injuries Reported (5 Injuries Reported on the Roadway)

- Chattanooga Rd/N Bypass
 - 26 Total Crashes
 - 13.04 % of Total Crashes
 - 14.71 % of Injuries Reported (5 Injuries Reported on this Roadway)

- Glenwood Ave
 - 12 Total Crashes
 - 10.43 % of Total Crashes
 - 8.82 % of Injuries Reported (3 Injuries Reported on this Roadway)

- Waugh St
 - 7 Total Crashes
 - 6.09 % of Total Crashes
 - 8.82 % of Injuries Reported (3 Injuries Reported on the Roadway)

- Tibbs Rd
 - 7 Total Crashes
 - 6.09 % of Total Crashes
 - 0 % of Injuries Reported (0 Injury Reported on the Roadway)

Crashes Involving DUI

- 3 Reported Crashes involving DUI

Crashes Involving Speed

- 7 Reported Crashes involving Speed (Includes Too Fast for Conditions)

Crashes Involving Distracted or Inattentive Driver

- 12 Crashes Reported with Distracted or Inattentive Driver

Crashes Involving Drivers Following One Another Too Closely

- 30 Crashes Reported involving Following Too Closely

DALTON POLICE DEPARTMENT
PUBLIC SAFETY COMMISSION MEETING
MARCH 26, 2019

Crashes by Type

- Angle Crash 50 / 43.48%
- Rear End 47 / 40.87%
- Sideswipe – Same Direction 7 / 6.09%
- Non-Vehicle 6 / 5.22%
- Sideswipe – Opposite Direction 3 / 2.61%
- Head On 2 / 1.74%

Days of the Week

- 19 crashes occurred on Mondays
- 22 crashes occurred on Tuesdays
- 19 crashes occurred on Wednesdays
- 19 crashes occurred on Thursdays
- 17 crashes occurred on Fridays
- 10 crashes occurred on Saturdays
- 9 crashes occurred on Sundays

Time of Day

- 0000- 0559-2
- 0600-0859-21
- 0900-1059-4
- 1100-1359-25
- 1400-1559-20
- 1600-1859-30
- 1900-2159-10
- 2200-2359-3

Top Contributing Factors

- Following Too Closely: 30 (26.09 % of all crashes)
- Failure to Yield: 26 (22.61 % of all crashes)
- Changed Lanes Improperly: 9 (7.83 % of all crashes)
- Other: 8 (6.96 % of all crashes)
- Disregard Stop Sign/Signal: 7 (6.09 % of all crashes)
- Improper Turn: 7 (6.09% of all crashes)

DALTON POLICE DEPARTMENT
PUBLIC SAFETY COMMISSION MEETING
MARCH 26, 2019

Based on the crash data from December 2018, Selective Enforcement Details were conducted in the following areas in February 2019:

- **Glenwood Ave**
- **Chattanooga Rd**
- **Walnut Ave**

There were 20 total Enforcement Details conducted in February 2019, resulting in 272 total violations being identified.

Comparing the crash data compiled and the enforcement activities conducted for the month of February 2019, details will be conducted in March 2019 in the following areas:

- **Glenwood Ave**
- **Chattanooga Rd**
- **Walnut Ave**