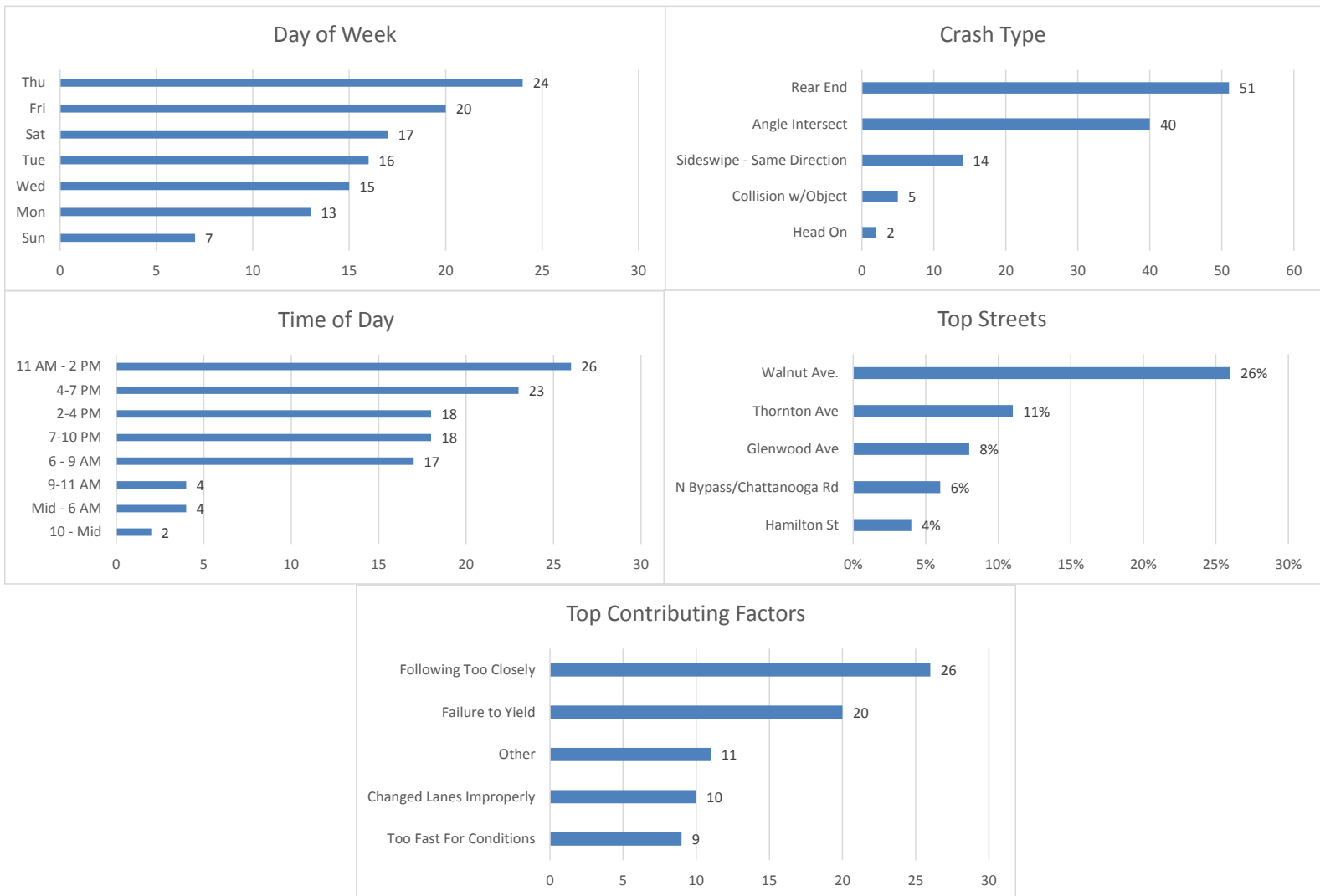


**DALTON POLICE DEPARTMENT
PUBLIC SAFETY COMMISSION MEETING
FEBRUARY 26, 2019**

January 2019 Crash Statistics

In January 2019 there were 112 non-private property crashes reported. Injury crashes and injuries decreased from December 2018. There were no serious injuries reported in January 2019. Rear end and angle crashes were the most prevalent during January 2019. Following too close was the leading contributing factor in both injury and non-injury crashes. Walnut Ave and Thornton Ave were the roadways where the majority of the crashes occurred. In January 2019 approximately 26% of all crashes in the city occurred on Walnut Ave. In January 2019, Chattanooga Rd/Bypass and Walnut Ave were the roadways with the most injury crashes.



112 Crashes Reported in December 2018

- There were 15 less crashes in January 2019 than in December 2018.
 - 12 Crashes reported in which injuries occurred.
 - That is one injury crash for every 9.33 crashes reported.
 - Multiple injuries were reported in 3 crashes.

DALTON POLICE DEPARTMENT
PUBLIC SAFETY COMMISSION MEETING
FEBRUARY 26, 2019

- Total Injuries Reported
 - 15 injuries were reported.
 - 0 serious injuries were reported.

Top 5 Streets

- Walnut Avenue
 - 29 Total Crashes
 - 25.89 % of Total Crashes
 - 33.33 % of Injuries Reported (5 Injuries Reported on the Roadway)

- Thornton Ave
 - 12 Total Crashes
 - 10.71 % of Total Crashes
 - 0 % of Injuries Reported (0 Injuries Reported on this Roadway)

- Glenwood Ave
 - 9 Total Crashes
 - 8.04 % of Total Crashes
 - 6.67 % of Injuries Reported (1 Injuries Reported on this Roadway)

- Chattanooga Rd/N Bypass
 - 7 Total Crashes
 - 6.25 % of Total Crashes
 - 26.67 % of Injuries Reported (4 Injuries Reported on the Roadway)

- Airport Rd
 - 4 Total Crashes
 - 3.57 % of Total Crashes
 - 0 % of Injuries Reported (0 Injury Reported on the Roadway)

Crashes Involving DUI

- 6 Reported Crashes involving DUI

Crashes Involving Speed

- 9 Reported Crashes involving Speed (Includes Too Fast for Conditions)

Crashes Involving Distracted or Inattentive Driver

- 9 Crashes Reported with Distracted or Inattentive Driver

DALTON POLICE DEPARTMENT
PUBLIC SAFETY COMMISSION MEETING
FEBRUARY 26, 2019

Crashes Involving Drivers Following One Another Too Closely

- 26 Crashes Reported involving Following Too Closely

Crashes by Type

- Rear End 51 / 45.54%
- Angle Crash 40 / 35.71%
- Sideswipe – Same Direction 14 / 12.50%
- Non-Vehicle 5 / 4.46%
- Head On 2 / 1.79%

Days of the Week

- 13 crashes occurred on Mondays
- 16 crashes occurred on Tuesdays
- 15 crashes occurred on Wednesdays
- 24 crashes occurred on Thursdays
- 20 crashes occurred on Fridays
- 17 crashes occurred on Saturdays
- 7 crashes occurred on Sundays

Time of Day

- 0000- 0559-4
- 0600-0859-17
- 0900-1059-4
- 1100-1359-26
- 1400-1559-18
- 1600-1859-23
- 1900-2159-18
- 2200-2359-2

Top Contributing Factors

- Following Too Closely: 26 (23.21 % of all crashes)
- Failure to Yield: 20 (17.86 % of all crashes)
- Other: 11 (9.82 % of all crashes)
- Changed Lanes Improperly: 10 (8.93 % of all crashes)
- Changed Lanes Improperly: 9 (8.04 % of all crashes)

DALTON POLICE DEPARTMENT
PUBLIC SAFETY COMMISSION MEETING
FEBRUARY 26, 2019

Based on the crash data from December 2018, Selective Enforcement Details were conducted in the following areas in January 2019:

- **Glenwood Ave**
- **Chattanooga Rd**
- **Walnut Ave**

There were 34 total Enforcement Details conducted in January 2019, resulting in 473 total violations being identified.

Comparing the crash data compiled and the enforcement activities conducted for the month of January 2019, details will be conducted in February 2019 in the following areas:

- **Glenwood Ave**
- **Thornton Ave**
- **Walnut Ave**