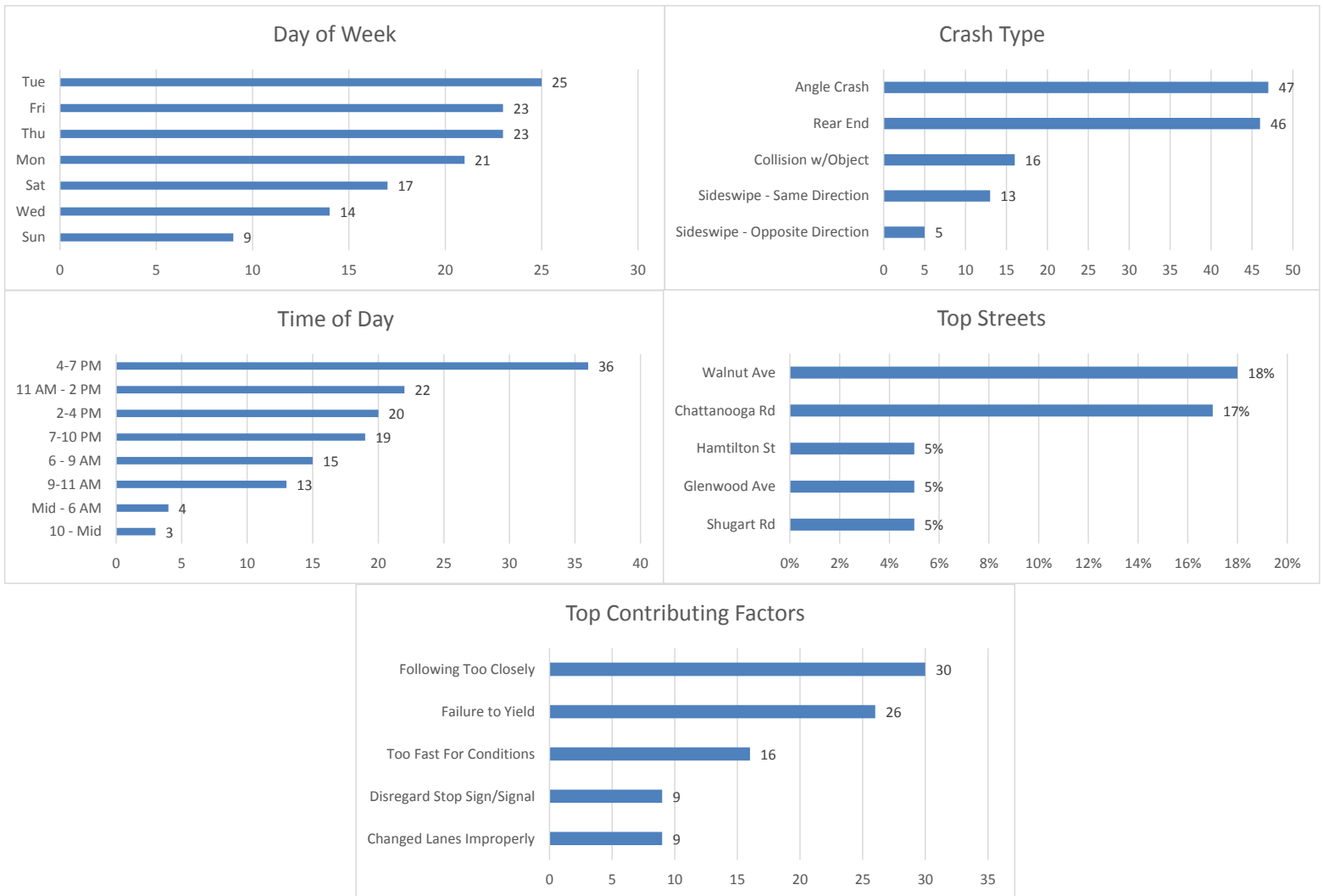


**DALTON POLICE DEPARTMENT  
PUBLIC SAFETY COMMISSION MEETING  
JANUARY 28, 2020**

**December 2019 Crash Statistics**

In December 2019 there were 132 non-private property crashes reported. Injury crashes stayed the same as November 2019, while injuries increased. Rear end and angle crashes were the most prevalent during December 2019. Following too closely was the leading contributing factor in non-injury crashes. Failure to yield was the leading contributing factor for injury crashes. Chattanooga Rd and Walnut Ave were the roadways where the majority of the crashes occurred. In December 2019 approximately 18.18% of all crashes in the city occurred on Walnut Ave. In December 2019, Chattanooga Rd was the roadway with the most injury crashes.



**132 Crashes Reported in December 2019**

- There were 18 more crashes in December 2019 than there were in November 2019.
  - 21 Crashes reported in which injuries occurred.
  - That is one injury crash for every 6.29 crashes reported.
  - Multiple injuries were reported in 7 crashes.

DALTON POLICE DEPARTMENT  
PUBLIC SAFETY COMMISSION MEETING  
JANUARY 28, 2020

- Total Injuries Reported
  - 37 injuries were reported.
  - 1 serious injury was reported.
  - 1 fatality was reported.

Top 5 Streets

- Walnut Ave
  - 24 Total Crashes
  - 18.18% of Total Crashes
  - 13.51% of Injuries Reported (5 Injuries Reported on the Roadway)
  
- Chattanooga Rd / N Bypass
  - 23 Total Crashes
  - 17.42% of Total Crashes
  - 40.54% of Injuries Reported (15 Injuries Reported on this Roadway)
  
- Hamilton St
  - 7 Total Crashes
  - 5.30% of Total Crashes
  - 0% of Injuries Reported (0 Injuries Reported on this Roadway)
  
- Glenwood Ave
  - 7 Total Crashes
  - 5.30% of Total Crashes
  - 8.11% of Injuries Reported (3 Injuries Reported on the Roadway)
  
- Shugart Rd
  - 6 Total Crashes
  - 4.55% of Total Crashes
  - 5.41% of Injuries Reported (2 Injuries Reported on the Roadway)

Crashes Involving DUI

- 2 Reported Crashes involving DUI

Crashes Involving Speed

- 16 Reported Crashes involving Speed (Includes Too Fast for Conditions)

Crashes Involving Distracted or Inattentive Driver

DALTON POLICE DEPARTMENT  
PUBLIC SAFETY COMMISSION MEETING  
JANUARY 28, 2020

- 11 Crashes Reported with Distracted or Inattentive Driver

Crashes Involving Drivers Following One Another Too Closely

- 30 Crashes Reported involving Following Too Closely

Crashes by Type

- Angle Crash 47 / 35.61%
- Rear End Crash 46 / 34.85%
- Collision with an Object 16 / 12.12%
- Sideswipe – Same Direction 13 / 9.85%
- Sideswipe – Opposite Direction 5 / 3.79%

Days of the Week

- 21 crashes occurred on Mondays
- 25 crashes occurred on Tuesdays
- 14 crashes occurred on Wednesdays
- 23 crashes occurred on Thursdays
- 23 crashes occurred on Fridays
- 17 crashes occurred on Saturdays
- 9 crashes occurred on Sundays

Time of Day

- 0000- 0559-4
- 0600-0859-15
- 0900-1059-13
- 1100-1359-22
- 1400-1559-20
- 1600-1859-36
- 1900-2159-19
- 2200-2359-3

Top Contributing Factors

- Following Too Closely: 30 (22.73 % of all crashes)
- Failure to Yield: 26 (19.70 % of all crashes)
- Too Fast for Conditions: 16 (12.12 % of all crashes)
- Disregard Stop Sign/Signal: 9 (6.82 % of all crashes)
- Changed Lanes Improperly: 9 (6.82 % of all crashes)

DALTON POLICE DEPARTMENT  
PUBLIC SAFETY COMMISSION MEETING  
JANUARY 28, 2020

Based on the crash data from November 2019, Selective Enforcement Details were conducted in the following areas in December 2019:

- **Walnut Ave**
- **Glenwood Ave**

There were 7 total Enforcement Detail conducted in December 2019, resulting in 53 total violations being identified.

Comparing the crash data compiled and the enforcement activities conducted for the month of December 2019, details will be conducted in January 2020 in the following areas:

- **Walnut Ave**
- **Chattanooga Rd/N Bypass**