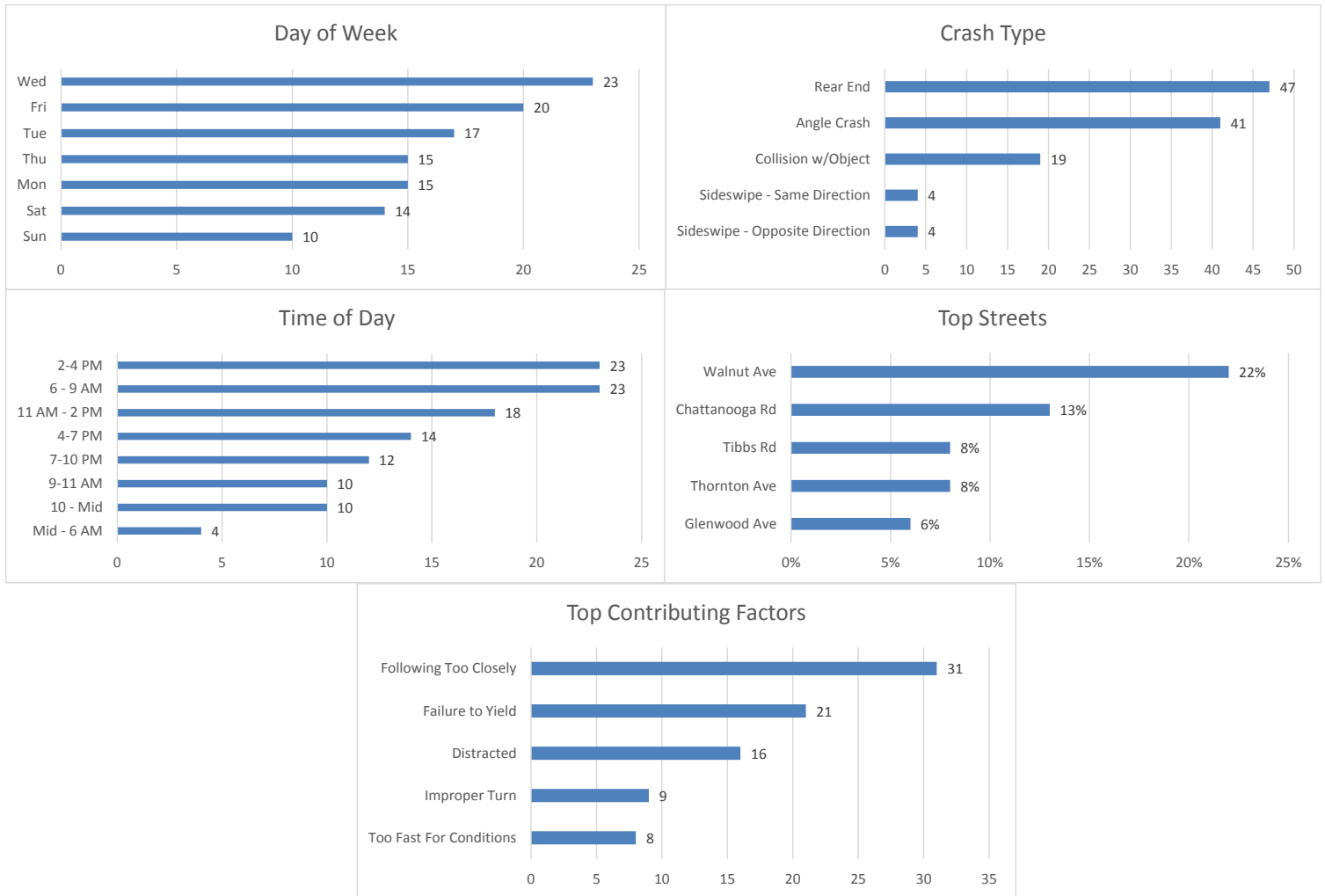


**DALTON POLICE DEPARTMENT
PUBLIC SAFETY COMMISSION MEETING
DECEMBER 17, 2019**

November 2019 Crash Statistics

In November 2019 there were 114 non-private property crashes reported. Injury crashes decreased from October 2019, while injuries stayed the same. Rear end and angle crashes were the most prevalent during November 2019. Following too closely was the leading contributing factor in non-injury crashes. Failure to yield was the leading contributing factor for injury crashes. Chattanooga Rd and Walnut Ave were the roadways where the majority of the crashes occurred. In November 2019 approximately 21.93% of all crashes in the city occurred on Walnut Ave. In November 2019, Walnut Ave was the roadway with the most injury crashes.



114 Crashes Reported in November 2019

- There were 22 less crashes in November 2019 than there were in October 2019.
 - 21 Crashes reported in which injuries occurred.
 - That is one injury crash for every 5.43 crashes reported.
 - Multiple injuries were reported in 7 crashes.

DALTON POLICE DEPARTMENT
PUBLIC SAFETY COMMISSION MEETING
DECEMBER 17, 2019

- Total Injuries Reported
 - 30 injuries were reported.
 - 0 serious injuries were reported.
 - 0 fatalities were reported.

Top 5 Streets

- Walnut Ave
 - 25 Total Crashes
 - 21.93% of Total Crashes
 - 13.33% of Injuries Reported (4 Injuries Reported on the Roadway)

- Chattanooga Rd / N Bypass
 - 15 Total Crashes
 - 13.16% of Total Crashes
 - 13.33% of Injuries Reported (4 Injuries Reported on this Roadway)

- Thornton Ave
 - 9 Total Crashes
 - 7.89% of Total Crashes
 - 3.33% of Injuries Reported (1 Injury Reported on this Roadway)

- Tibbs Rd
 - 9 Total Crashes
 - 7.89% of Total Crashes
 - 3.33% of Injuries Reported (1 Injuries Reported on the Roadway)

- Glenwood Ave
 - 7 Total Crashes
 - 6.14% of Total Crashes
 - 6.67% of Injuries Reported (2 Injuries Reported on the Roadway)

Crashes Involving DUI

- 4 Reported Crashes involving DUI

Crashes Involving Speed

- 9 Reported Crashes involving Speed (Includes Too Fast for Conditions)

Crashes Involving Distracted or Inattentive Driver

- 16 Crashes Reported with Distracted or Inattentive Driver

DALTON POLICE DEPARTMENT
PUBLIC SAFETY COMMISSION MEETING
DECEMBER 17, 2019

Crashes Involving Drivers Following One Another Too Closely

- 31 Crashes Reported involving Following Too Closely

Crashes by Type

- Rear End 47 / 41.23%
- Angle Crash 41 / 35.96%
- Collision with an Object 19 / 16.67%
- Sideswipe – Same Direction 4 / 3.51%
- Sideswipe – Opposite Direction 4 / 3.51%

Days of the Week

- 15 crashes occurred on Mondays
- 17 crashes occurred on Tuesdays
- 23 crashes occurred on Wednesdays
- 15 crashes occurred on Thursdays
- 20 crashes occurred on Fridays
- 14 crashes occurred on Saturdays
- 10 crashes occurred on Sundays

Time of Day

- 0000- 0559-4
- 0600-0859-23
- 0900-1059-10
- 1100-1359-18
- 1400-1559-23
- 1600-1859-14
- 1900-2159-12
- 2200-2359-10

Top Contributing Factors

- Following Too Closely: 31 (27.19 % of all crashes)
- Failure to Yield: 21 (18.42 % of all crashes)
- Distracted: 16 (14.04 % of all crashes)
- Improper Turn: 9 (7.89 % of all crashes)
- Too Fast for Conditions: 8 (7.02 % of all crashes)

DALTON POLICE DEPARTMENT
PUBLIC SAFETY COMMISSION MEETING
DECEMBER 17, 2019

Based on the crash data from October 2019, Selective Enforcement Details were conducted in the following areas in November 2019:

- **Walnut Ave**
- **Glenwood Ave**
- **College Dr**

There were 30 total Enforcement Detail conducted in November 2019, resulting in 298 total violations being identified.

Comparing the crash data compiled and the enforcement activities conducted for the month of November 2019, details will be conducted in October 2019 in the following areas:

- **Walnut Ave**
- **Chattanooga Rd/N Bypass**