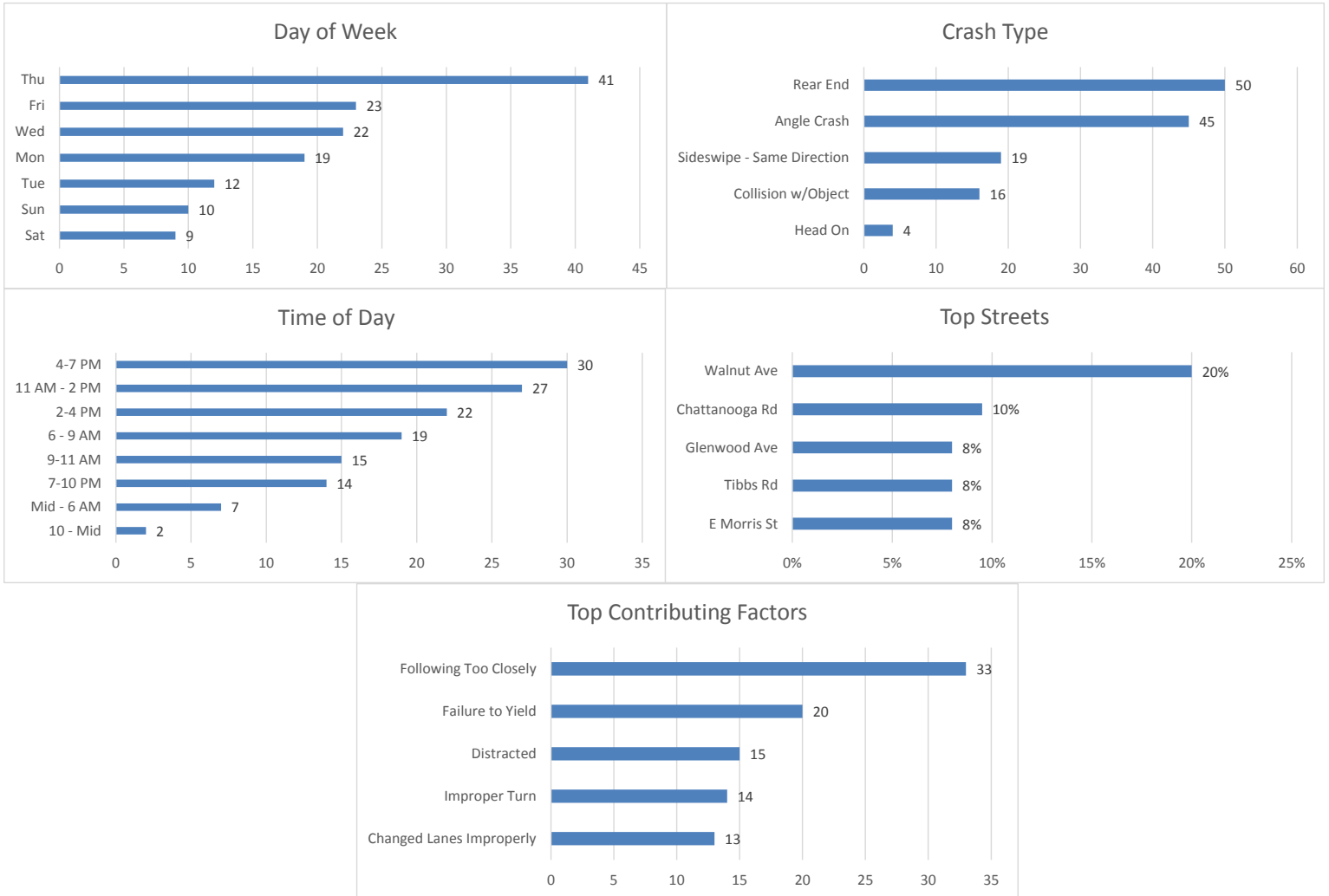


# October 2019 Crash Statistics

In October 2019 there were 136 non-private property crashes reported. Injury crashes and injuries decreased from September 2019. Rear end and angle crashes were the most prevalent during October 2019. Following too close was the leading contributing factor in non-injury crashes. Failure to yield was the leading contributing factor for injury crashes. Chattanooga Rd and Walnut Ave were the roadways where the majority of the crashes occurred. In October 2019 approximately 19.85% of all crashes in the city occurred on Walnut Ave. In October 2019, Chattanooga Rd was the roadway with the most injury crashes.



## 136 Crashes Reported in October 2019

- There were 32 more crashes in October 2019 than there were in September 2019.
  - 22 Crashes reported in which injuries occurred.
  - That is one injury crash for every 6.18 crashes reported.
  - Multiple injuries were reported in 5 crashes.
  
- Total Injuries Reported
  - 30 injuries were reported.
  - 0 serious injuries were reported.
  - 0 fatality was reported.

## Top 5 Streets

- Walnut Ave
  - 27 Total Crashes
  - 19.85% of Total Crashes
  - 16.67% of Injuries Reported (5 Injuries Reported on the Roadway)
- Chattanooga Rd / N Bypass
  - 13 Total Crashes
  - 9.56% of Total Crashes
  - 30.00% of Injuries Reported (9 Injuries Reported on this Roadway)
- Glenwood Ave
  - 11 Total Crashes
  - 8.09% of Total Crashes
  - 3.33% of Injuries Reported (1 Injury Reported on this Roadway)
- Tibbs Rd
  - 11 Total Crashes
  - 8.09% of Total Crashes
  - 13.33% of Injuries Reported (4 Injuries Reported on the Roadway)
- E Morris St
  - 11 Total Crashes
  - 8.09% of Total Crashes
  - 6.67% of Injuries Reported (2 Injuries Reported on the Roadway)

## Crashes Involving DUI

- 6 Reported Crashes involving DUI

## Crashes Involving Speed

- 7 Reported Crashes involving Speed (Includes Too Fast for Conditions)

## Crashes Involving Distracted or Inattentive Driver

- 15 Crashes Reported with Distracted or Inattentive Driver

## Crashes Involving Drivers Following One Another Too Closely

- 33 Crashes Reported involving Following Too Closely

## Crashes by Type

- Rear End 50 / 36.76%
- Angle Crash 45 / 33.09%

- Sideswipe – Same Direction 19 / 13.97%
- Collision with Object 16 / 11.76%
- Head On 4 / 2.94%

#### Days of the Week

- 19 crashes occurred on Mondays
- 12 crashes occurred on Tuesdays
- 22 crashes occurred on Wednesdays
- 41 crashes occurred on Thursdays
- 23 crashes occurred on Fridays
- 9 crashes occurred on Saturdays
- 10 crashes occurred on Sundays

#### Time of Day

- 0000- 0559-7
- 0600-0859-19
- 0900-1059-15
- 1100-1359-27
- 1400-1559-22
- 1600-1859-30
- 1900-2159-14
- 2200-2359-2

#### Top Contributing Factors

- Following Too Closely: 33 (24.26 % of all crashes)
- Failure to Yield: 20 (14.71 % of all crashes)
- Distracted: 15 (11.03 % of all crashes)
- Improper Turn: 14 (10.29 % of all crashes)
- Changed Lanes Improperly: 11 (9.56 % of all crashes)

Based on the crash data from September 2019, Selective Enforcement Details were conducted in the following areas in October 2019:

- **Walnut Ave**
- **Glenwood Ave**
- **Chattanooga Rd**

There were 26 total Enforcement Detail conducted in October 2019, resulting in 215 total violations being identified.

Comparing the crash data compiled and the enforcement activities conducted for the month of October 2019, details will be conducted in October 2019 in the following areas:

- **Walnut Ave**
- **Glenwood Ave**