

·SIDE·ELEVATION·

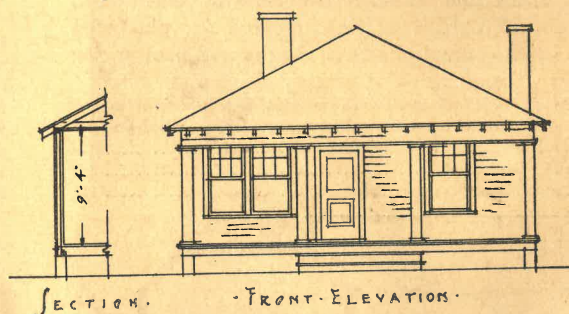
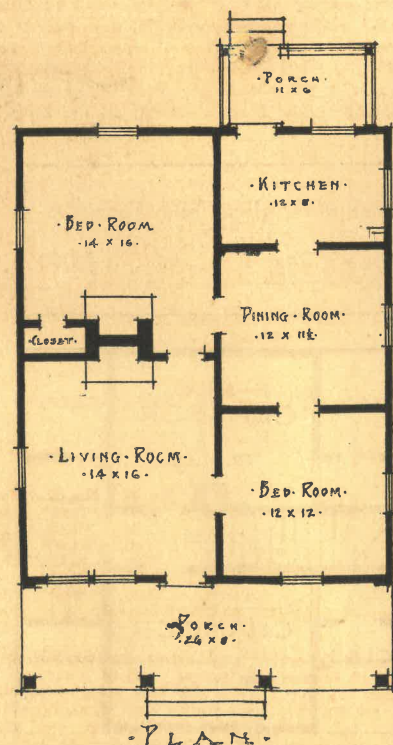
### The Zudora—\$372

This five-room cottage has proven exceedingly popular, as the appearance outside is good, while the arrangement inside is ideal.

#### SPECIFICATIONS

Size, main building 26' x 32'; front veranda 8' x 26'; rear veranda 6' x 11'; five rooms; sills 4" x 8" built up; floor joists 2" x 8-24" centers; ceiling joists 2" x 4-24" centers; studding and rafters 2" x 4-24" centers; outside walls beveled weather boarding; inside walls ceiled throughout; doors 2-8" x 6-8"; windows 28" x 30" with top sash divided as shown; two mantels (no grates figured); door and window frames knocked down; two pair steps; all material in this design to be No. 1 common yellow pine except shingles, which are Extra Star A, Star Washington Red Cedar.

We agree to furnish all lumber, millwork, doors, windows, frames and shingles for.....\$372  
Nails and hardware and ridge roll..... 24  
Paint for two coats outside..... 13  
Paint for two coats inside..... 18  
Plans and specifications..... 2



SECTION · FRONT ELEVATION ·

United States Post Office

2nd CLASS

Dalton, Ga. May 13, 1914.

During my administration as postmaster at Dalton, for the past 16 years, I have been thrown in close personal touch with the officers of the Farrar Lumber Co., and will say that they stand well in this County and may be relied on to protect their contracts.

I have purchased considerable material from this firm, and our relations have always been most pleasant and satisfactory.

Yours truly,

*J. A. Crawford*

**FARRAR-MADE  
HOUSES.**  
A GEORGIA PRODUCT

**INSURE HAPPINESS  
FOR  
CITY, SUBURBAN  
OR COUNTRY LIFE**

## Introductory

**THE** Farrar Lumber Co. was founded by W. B. Farrar, father of the present owners, in the year 1871. ¶ The present plant was erected at Dalton, Ga., in 1881, and has been operated at the same place under the same management to the present date. We also operate a mill at Bainbridge, Ga. ¶ The business is owned and under the personal supervision of the following officers:

**JAMES K. FARRAR, President**  
**HENRY B. FARRAR, Vice-President**  
**FLOYD F. FARRAR, Sec. & Treas.**

For thirty-five years we have been manufacturing complete house patterns and shipping same over a number of states, but on the houses listed in this catalog we do not figure to cut the material to exact shapes and specifications except on garages and summer bungalows which are explained in specifications covering same.

#### MATERIAL

Unless otherwise specified all lumber used in the construction of our houses will be furnished in pine and shingles in Washington Red Cedar. For hardwood floors and materials in other woods, write for special prices.

made from 1' x 6', finished 3/4' x 5 1/2'. Bevel siding is made by dressing 1' x 6' four sides and resawing on bevel, making bottom edge thicker than top.

#### FRAMES

Door and window frames are made of yellow pine, cut out and shipped knocked down.

#### FRAMING

Our framing is yellow pine dressed side and edge and trimmed to uniform size and length.

#### STORM SHEATHING AND SUB-FLOORING

These items may be supplied or omitted on any design, therefore for your convenience we have quoted same in separate items which will enable you to arrive at price either way.

#### FLOORING

When not otherwise specified we furnish 1' x 4' (finished 1 1/8' x 3 1/4') yellow pine in grade shown in specification.

#### SIDING

Siding will be furnished in yellow pine in grade specified. Drop siding, pattern 105 is

#### MILL WORK AND MOULDING

All finish is dressed yellow pine to conform to specification and mouldings are manufactured to standard patterns.

#### DOORS AND WINDOWS

These are supplied to conform to specifications in sizes and designs to suit; same may be changed if desired.

#### MANTELS

We supply mantels of neat pattern to suit each plan, one for each fire place opening in pine or oak; however, these may be changed to suit taste of customer.





# FARRAR HOUSES

FARRAR LUMBER CO. DALTON, GEORGIA.



**SIDING**—Siding will be furnished in yellow pine in grade specified. Drop siding, pattern is made from 1"x6", finished 3/4"x5 1/2". Bevel siding is made by dressing 1"x6" four sides and resawing on bevel, making bottom edge thicker than top.

**FLOORING and CEILING**—We supply flooring both in Yellow Pine and Oak and have observed the most popular demand in our specifications on each design, however, the quantities of Pine or Oak flooring may be changed to suit the individual taste of each customer, and price will be adjusted accordingly. Please bear in mind that Oak floors must always be laid over sub-flooring. Pine flooring and ceiling is tongued and grooved and furnished in standard stock lengths; oak flooring is furnished in standard stock lengths with edges and ends tongued and grooved.

**FINISH LUMBER, MILL WORK and MOULDINGS**—This material is furnished in Yellow Pine machined to standard sizes and patterns to conform to plans, and is furnished in standard stock lengths. Step material is cut to specifications and shipped K. D.; mantels, brackets, louvers, ventilators, colonade pedestals and built-in fixtures are made up at the factory.

**FRAMES**—Door and window frames are made of Yellow Pine mortised and cut to specifications, bundled and shipped knocked down, complete with inside and outside casing and trim, in grades to harmonize with other materials used in each design. Sash pulleys furnished with check rail frames.

**DOORS and WINDOWS**—These are furnished in grades and designs to suit plans and specifications for each house. All windows glazed.

**PLASTER LATHS**—Where specifications call for laths, we furnish same in Yellow Pine; but our estimates do not include plaster on account of the excessive freight on this material when shipped in connection with lumber. Where customers cannot secure plaster locally we will gladly assist them in securing same from the nearest distributing point. Customers desiring interior walls covered with material other than plaster will be quoted on request.

**FOUNDATION MATERIAL**—Brick, cement, stone, lime, sand and other materials used in foundations and chimneys being cheap, heavy material it is not practical to

ship same any great distance. They are usually secured locally and are not included in our estimates.

**HARDWARE and PAINT**—These materials are furnished as indicated in the specifications covering each design. No paint or stain figured for roof surfaces. Customers desiring to select their own hardware and paint may omit these items and receive credit for same.

**PLUMBING and ELECTRIC FIXTURES and HEATING**—These materials are not included in our estimate, and are usually secured locally, however, we are always ready and anxious to assist our customers in any way we can on these items.

**CONSTRUCTION**—Our estimates do not include cost of any labor for erecting or superintending, however, in many localities we are in position to refer our customers to reliable contractors who will furnish reasonable estimates covering construction.

**SHIPMENTS**—Under our system of shipping each item is carefully checked as loaded, and car doors are sealed before leaving our plant. Each customer is requested to see that our seals are intact when shipment is received, and very carefully check the material as it is unloaded from the car, as we cannot, neither will the railroad, entertain a claim for shortage, based on the checking of material after same has been delivered to the building.

**GUARANTEE**—We positively guarantee every item in our houses strictly as represented and to be fully up to the requirements of standard specifications and grading rules.

**MATERIAL ESTIMATES**—In estimating the various materials necessary for our houses, we are very careful to figure a sufficient quantity, and we cannot assume responsibility if the customer permits his workmen to mis-use or waste any of the material.

**PLANS**—We have no plans for sale. However, after your order is placed with us for material you will be loaned a complete set of blue print drawings with the understanding that they are to be used only in connection with the construction of your house, with materials furnished by us, and returned to us in good condition within a reasonable length of time. Our plans are copyrighted, and all persons are warned not to use same except in connection with our material.

## TERMS

**I**N ORDER to save delay in investigating the financial responsibility of our customers and to avoid the necessity of having to tax our "Good Pay" customers to cover losses on "Bad Pay," which could not be avoided in doing a credit business, we have given our customers the benefit of our very lowest manufacturers' prices and offer you choice of the following three plans of settlement:

**PLAN No. 1**—Remit cash with order for 50 per cent of purchase price. We will ship car and send draft to your home bank and you pay balance to your bank on arrival of shipment.

**PLAN No. 2**—For full remittance with order, we will allow a special cash-with-order discount of 2 per cent on the full amount of your order.

**PLAN No. 3**—Deposit the full amount of your order in your home bank and have the president or cashier furnish us a certificate reading as follows:

This is to certify that-----has deposited in this bank the sum of-----Dollars which we agree to remit to The Farrar Lumber Co., Dalton, Ga., not later than five days after the arrival of shipment, it being understood that The Farrar Lumber Co. guarantee material as represented.

-----Bank.  
-----Cashier.

P. O.-----Date-----  
This plan offers you the full privilege of unloading, counting and inspecting your material before your money leaves your home bank.

By fair treatment to our customers we have remained in business over 50 years and expect to continue, and by observing these terms and eliminating bad accounts we are prepared to give you the benefit of lowest factory prices.



# FARRAR HOUSES

FARRAR LUMBER CO. DALTON, GEORGIA.

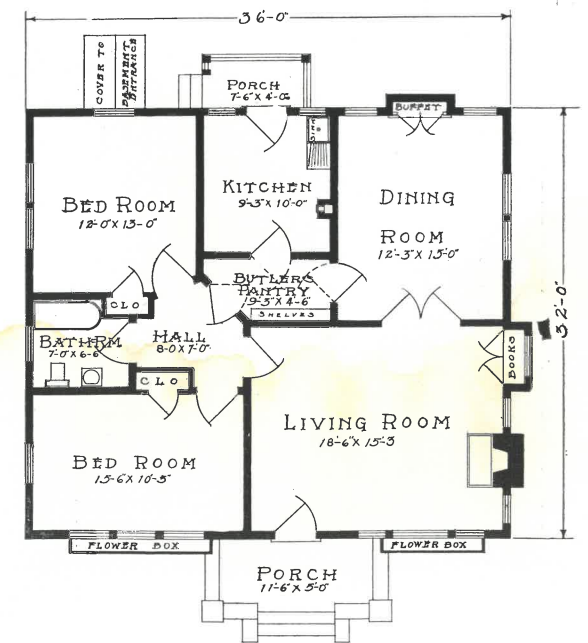


## ATLANTA

You cannot help but admire this little home for its pleasing appearance from the outside, and we invite careful study of the floor plan. In fact, just place yourself anywhere in the house and you are convenient to everywhere else. Note the flower boxes which are well arranged and add so much to general appearance.

## SPECIFICATIONS

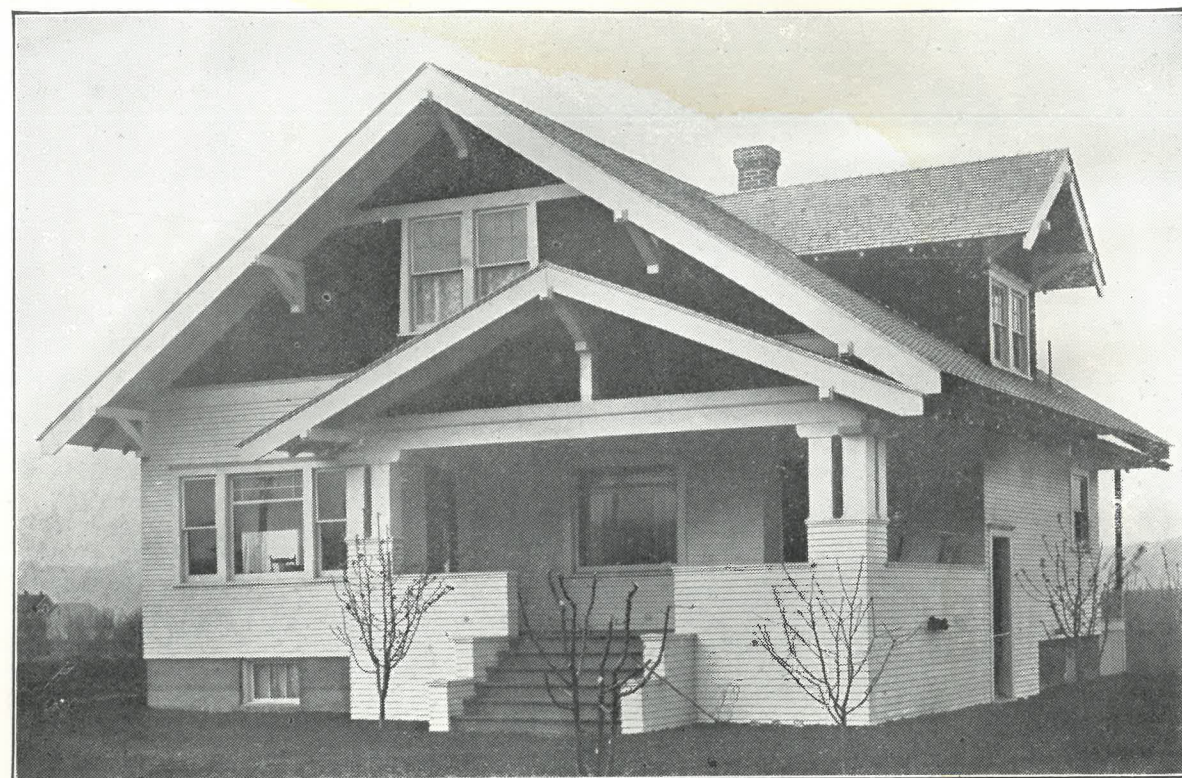
Size 36' x 32', exclusive of porches; height of ceilings 9'; all finish material high grade B & Better quality; rat proof sills and girders. Floor joists 2" x 8" on 20" centers, with bridging cut. Ceiling joists 2" x 6" on 16" centers; studding 2" x 4" on 16" centers; plates 2" x 4" doubled; large rafters, 2" x 6" on 24" centers, sufficient to carry slate surfaced shingle roof. Sub-floors for all rooms; 1 1/2" select oak floors in living room and dining room; balance of house floored with B & Better 1 1/2" yellow pine. Exterior walls storm sheathed and covered with building paper and bevel siding (or will substitute drop siding, omitting storm sheathing); roof sheathed solid and covered with slate surfaced composition shingles (or extra clear red cedar if preferred); Newells balustrade and steps for rear porch. Gable brackets and louvers. Flower boxes. No. 1 plaster laths for interior walls and ceilings (plaster not included). Porches ceiled over head. High grade doors and windows to conform to plan; front and rear doors glazed; glazed French doors between living room and dining room. All windows glazed. Door and window frames, including inside and outside casing and trim complete, cut to specifications and bundled; weights, cords and pulleys for windows. Bookcase in living room; buffet in dining room; locks, nails and hardware (guttering not included); paint for two coats outside surfaces; stain for inside trim. See general specifications page one and two.



FLOOR PLAN

## HOMY HOMES



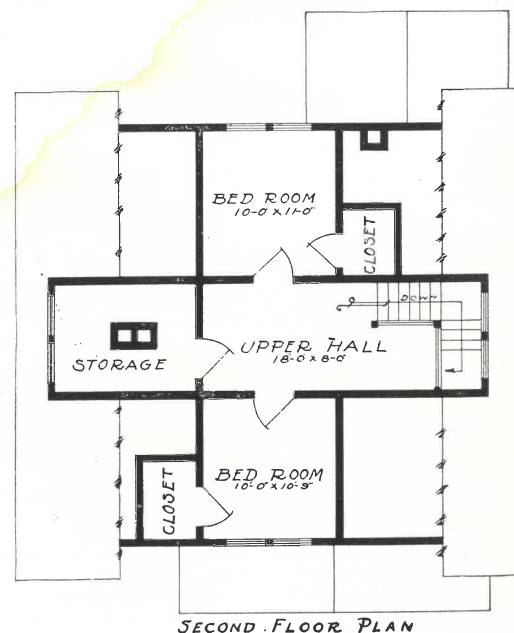
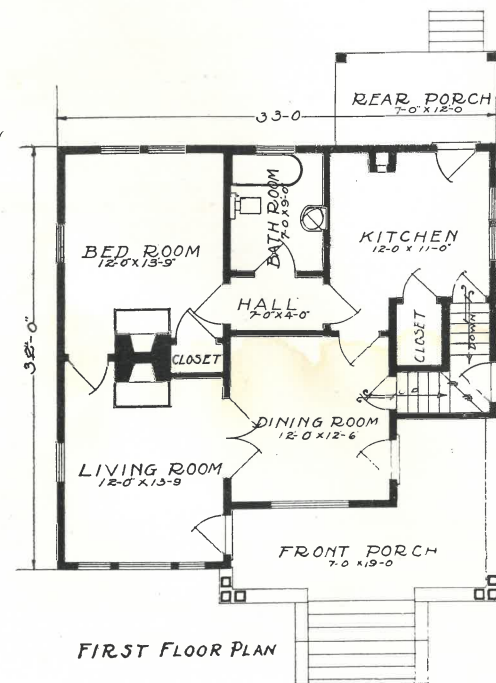


### BLUEFIELD

This house has that broad, substantial effect and will show up to good advantage on most any location; large box columns 10" x 10". This house is provided with heavy drop siding, which makes storm sheathing unnecessary.

#### SPECIFICATIONS

33' x 32', exclusive of rear porch; height of ceiling first floor 9'; second floor 8'; all finish material high grade B and better quality; rat proof sills and girders; floor joists 2 x 8 on 20" centers; with bridging; ceiling joists 2 x 6 on 16" centers; studding 2 x 4, on 16" centers; double plates 2 x 4; heavy rafters 2 x 6 on 24" centers sufficient to carry slate surfaced shingle roof; sub floors for all rooms; 13/16" select oak floors in living room and dining room; balance of house floored with B and better 13/16" Yellow Pine. Exterior walls covered with 1 x 6, drop siding; roof sheathed solid, and covered with slate surfaced composition shingles or extra clear red cedar if preferred. Columns and steps for front and rear porches; gable brackets; No. 1 plaster laths for interior walls and ceilings (plaster not included); porches ceiled overhead; high grade doors and windows to conform to plans. Outside doors and French doors between living room and dining room glazed; all windows glazed; door and window frames including inside and outside casing and trim complete, cut to specifications and bundled; weights, cords and pulleys for windows; locks, nails, and hardware; paint for two coats outside surfaces; stain for inside trim; see general specifications page one and two.



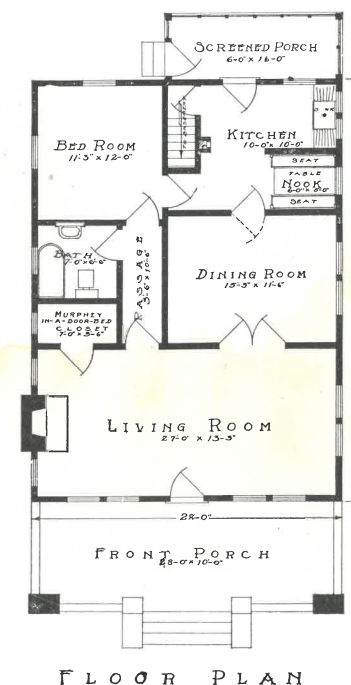
### BONITA

A lovely design that will grace any lot. Please note the Murphy-in-a-door-bed closet, which will enable you to utilize living room as a bed room by installing a Murphy bed, thereby getting a five-room service out of four rooms.

We omit extension of bathroom, also have changed arrangement of doors and windows as you will notice by referring to floor plans.

#### SPECIFICATIONS

Size 28' x 38'; exclusive of porches; height of ceiling 9'; all material high grade B and better quality; rat proof sills and girders; floor joists 2 x 8 on 20" centers; with bridging; ceiling joists 2 x 6, on 16" centers; studding 2 x 4 on 16" centers; plates 2 x 4 doubled; large rafters 2 x 6 on 24" centers, sufficient to carry slate surfaced shingle roof; sub floors for all rooms; 13/16" select Oak floors in living room and dining room; balance of house floored with B and Better 13/16" Yellow Pine. Exterior walls storm sheathed and covered with building paper and cedar shingles, or bevel siding if preferred (or will substitute drop siding, omitting storm sheathing); roof sheathed solid and covered with slate surfaced composition shingles (or extra clear red cedar shingles if preferred); columns, screen panels, door and steps for rear porch. Gable brackets and louvers; tables and seats for breakfast nook; No. 1 plaster laths for interior walls and ceilings (plaster not included); porches ceiled overhead; high-grade doors and windows to conform to plans; front and rear doors, and French doors between living room and dining room glazed; all windows glazed; door and window frames, including inside and outside casing and trim, complete cut to specifications and bundled; weights, cords and pulleys for windows. Locks, nails and hardware; paint for two coats, outside surfaces; stain for shingles on exterior walls; stain for inside trim. See general specifications, page one and two.







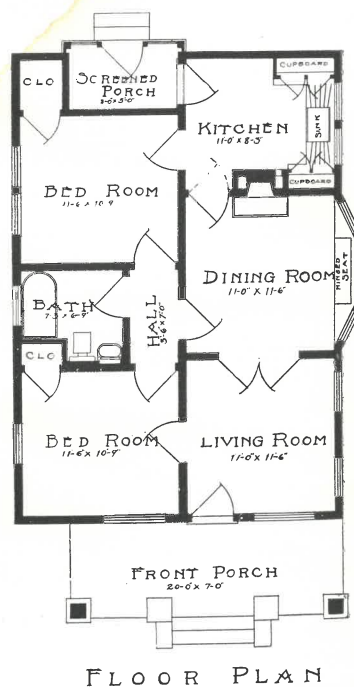
### CLOVER LEAF

This is a classy bungalow of five rooms; is compact; no waste space; lots of closet space; weather-boarded columns and pedestals in the front add greatly to the appearance.

#### SPECIFICATIONS

Size 24'-0" x 35'-0"; height of ceiling 9'-0"; all finish material high grade B and Better quality; rat-proof sills and girders; floor joists 2 x 8 on 20" centers with bridging cut; ceiling joists 2 x 6 on 16" centers; studding 2 x 4 on 16" centers; plates 2 x 4 doubled; heavy rafters 2 x 6 on 24" centers sufficient to carry slate surfaced shingle roof; sub-floors for all rooms; 13/16" select Oak floors in living room and dining room; balance of house floored with B and Better 13/16" Yellow Pine. Exterior walls storm sheathed and covered with building paper and bevel siding, to window sill line and storm sheathed and shingled above same. (May be weather-boarded full height if preferred). (Or will substitute drop siding omitting storm sheathing). Roof sheathed solid and covered with slate surfaced composition shingles (or extra clear red cedar if preferred). Balustrade, steps, gable louvers, and brackets; columns, screened panels, and door for rear porch. No. 1 plaster laths for interior walls and ceilings (plaster not included). Porches ceiled overhead. Hinged seat in dining room, cabinets in kitchen. High grade doors and windows to conform to plans. Front and rear doors and French doors between dining and living rooms, and all windows glazed. Door and window frame including inside and outside casing and trim complete cut to specifications and bundled. Weights, cords and pulleys for windows. Locks, nails and hardware; paint for two coats outside surfaces; stain for shingles on exterior walls. Stain for inside trim; see general specifications page one and two.

There is no place more delightful than one's own fireside.  
—Cicero.



FLOOR PLAN



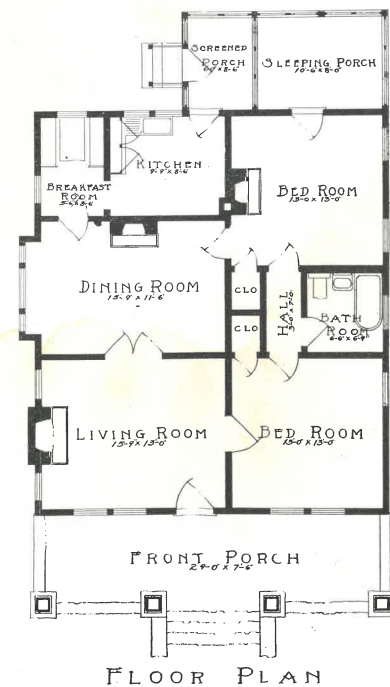
### DALTON

We believe the arrangement of the Dalton design will appeal to the close observer. Five rooms, bath, sleeping porch, breakfast room and two porches. We omit bay window to breakfast room as you will note by referring to floor plan.

#### SPECIFICATIONS

Size 30'-6" x 35'-0", excluding porches. Height of ceiling 9'; all finish material high grade B and Better quality; rat proof sills and girders. Floor joists 2 x 8, on 20" centers with bridging cut; ceiling joists 2 x 6 on 16" centers; studding 2 x 4, on 16" centers; plates 2 x 4 doubled; heavy rafters 2 x 6 on 24" centers sufficient to carry slate surfaced shingle roof; sub floors for all rooms; 13/16" select Oak flooring in living room and dining room; balance of house floored with B and Better 13/16" Yellow Pine. Exterior walls storm sheathed and covered with building paper and bevel siding (or will substitute drop siding omitting storm sheathing). Roof sheathed solid and covered with slate surfaced composition shingles (or extra clear red cedar if preferred). Columns for front porch, columns, screened panels, doors and steps for sleeping porch and rear porch. Gable brackets and louvers; No. 1 plaster laths for interior walls and ceiling (plaster not included). Porches ceiled overhead; high grade doors and windows to conform to plans; front and rear doors, French doors and all windows glazed; table and seats in breakfast nook; cupboard in kitchen. Door and window frames including inside and outside casing complete, cut to specifications and bundled; weights, cords and pulleys for windows; locks, nails and hardware; paint for two coats outside surfaces; stain for inside trim; see general specifications page one and two.

Farrar Service



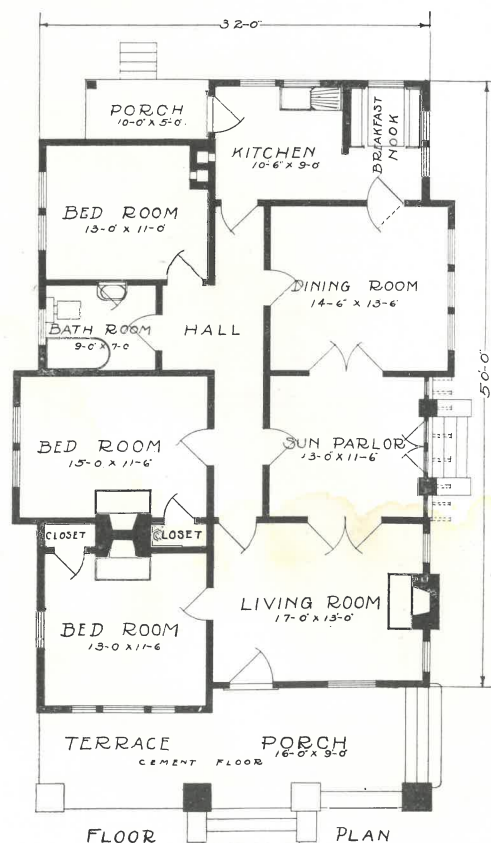
FLOOR PLAN





### EDGEWATER

This is an unusually attractive and well designed type. Note the open sun parlor with pergola effect. Walls are weather-boarded to belt course and gable shingled. Note French doors connecting living room, sun parlor and dining room.



#### SPECIFICATIONS

Size 32' x 50', excluding front porch; all finish material high grade B and Better quality; rat proof sills and girders; floor joists 2 x 8 on 20" centers with bridging cut; ceiling joists 2 x 6 on 16" centers; studding 2 x 4 on 16" centers. Plates 2 x 4 doubled; heavy rafters 2 x 6 on 24" centers, sufficient to carry slate surfaced shingle roof. Sub floors for all rooms; 13/16" select Oak floors in living room and dining room and sun parlor; balance of house floored with 13/16" B and Better Yellow Pine. Exterior walls storm sheathed and covered with building paper and bevel siding, up to belt course; gables shingled (will substitute drop siding, omitting storm sheathing, if desired). Roof sheathed solid and covered with slate surfaced composition shingles (or extra clear red cedar if preferred). Gable brackets, sash and louvers; No. 1 plaster laths for interior walls and ceiling (plaster not included). Screened panels, columns, door and steps for rear porch. Pantry work table and locker. Porches ceiled overhead. High grade doors and windows to conform to plans; front and rear doors and all windows glazed. Glazed French doors between dining room and sun parlor, and between living room and sun parlor. Door and window frames including inside and outside casing and trim complete, cut to specifications and bundled. Weights, cords and pulleys for windows. Locks, nails and hardware. Paint for two coats outside surface; stain for shingle gable; stain for inside trim; see general specifications, page one and two.

In the homes of America are born the children of America; and from them go out into American life, American men and women. They go out with the stamp of these homes upon them; and only as these homes are what they should be, will they be what they should be.—J. G. Holland.



### EVERGREEN

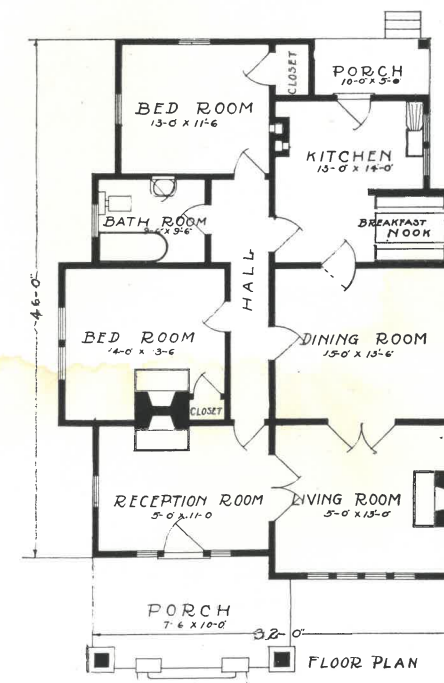
This is an ideal design with all waste space eliminated. Note liberal size of rooms, each having access to main hall. Dining room and living room connected with colonnade with bookcases (or French doors if preferred). Chimney could be located between dining room and living room if preferred. Large brick pedestals add greatly to the appearance.

### Farrar Service

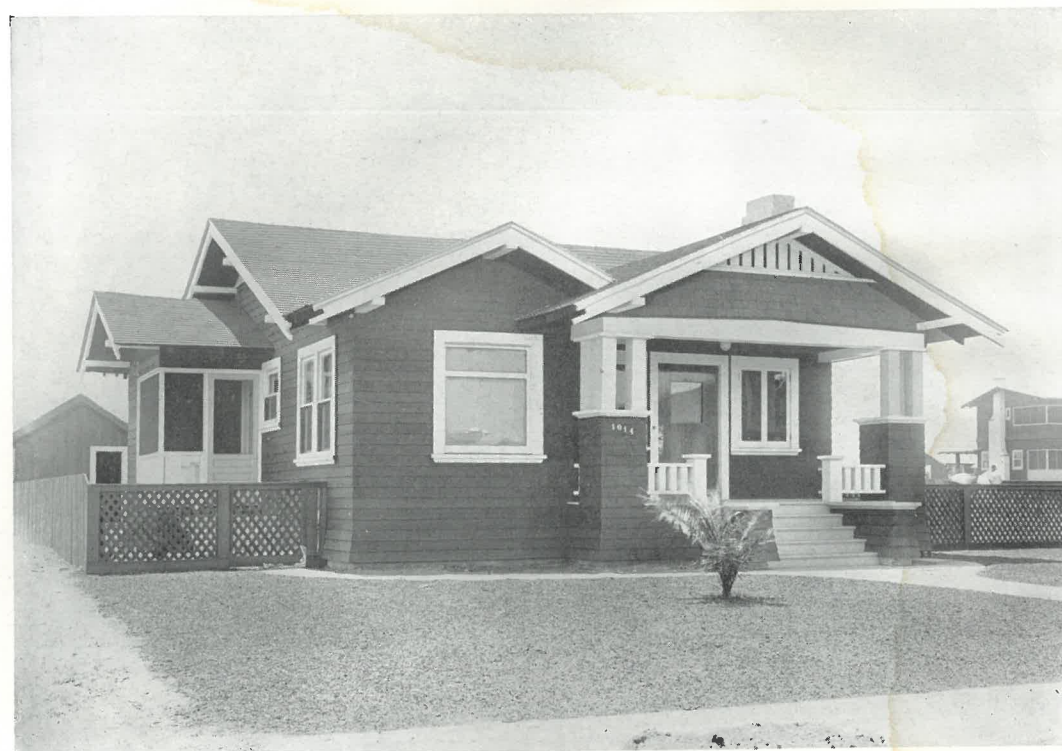
#### SPECIFICATIONS

Size 32'-0" x 48'-0", exclusive of front porch extension; height of ceiling 9'; all finish material high grade B and Better yellow pine. Rat proof sills and girders; floor joists 2 x 8 on 20" centers with bridging cut; ceiling joists 2 x 6 on 16" centers; studding 2 x 4 on 16" centers; plates 2 x 4 doubled; heavy rafters 2 x 6 on 24" centers, sufficient to carry slate surfaced shingle roof. Sub floors for all rooms. 13/16" select Oak floors in living room and dining room and reception hall. Balance of house floored with B and Better 13/16" Yellow Pine. Exterior walls storm sheathed and covered with building paper and bevel siding (or will substitute drop siding, omitting storm sheathing). Roof sheathed solid and covered with slate surfaced composition shingles (or extra clear red cedar if preferred). Front gable shingled; columns, gable brackets, gable sash; No. 1 plaster laths for interior walls and ceilings (plaster not included). Porches ceiled overhead; screened panels, doors and steps for rear porch. High grade doors and windows to conform to plans. Outside doors and all sash glazed. Door and window frames including inside and outside casing and trim complete cut to specifications and bundled; weights, cords and pulleys for windows; locks, nails and hardware. Paint for two coats outside surfaces; stain for inside trim and shingled gable. See general specifications page one and two.

The only ambition worth while is the kind that makes you want something so much you can't hold yourself from working extra hours to gain it.

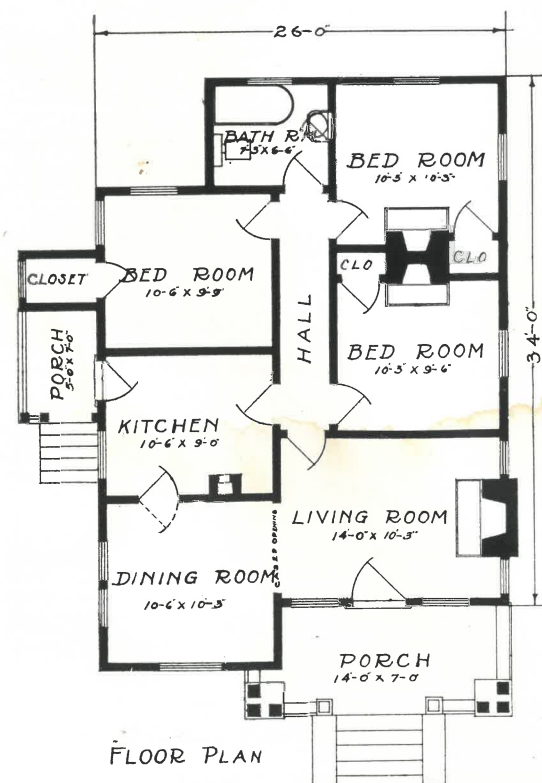






### GRAY GABLES

This makes an attractive six-room home, and can be erected at a very moderate cost; a unique feature of this home is the location of the bed rooms in the rear, grouped around a hallway that connects them with bath, living room and kitchen. The kitchen being centrally located saves many steps for the housewife who travels many miles between the kitchen and the front door.



FLOOR PLAN

### SPECIFICATIONS

26' x 38', six rooms, bath, two porches and lots of closet space. Height of ceiling 9'; all finish material B and Better Yellow Pine; rat proof sills and girders; floor joists 2 x 8 on 20" centers with bridging cut. Ceiling joists 2 x 6 on 16" centers; studding 2 x 4 on 16" centers; plates 2 x 4 doubled; large rafters 2 x 6 on 24" centers, sufficient to carry slate surfaced shingled roof; sub floors for all rooms; 13/16" select Oak floors in living room and dining room; balance of house floored with B and Better 13/16" Yellow Pine. Exterior walls storm sheathed and covered with building paper and bevel siding (or will substitute drop siding omitting storm sheathing). Roof sheathed solid and covered with slate surfaced composition shingles (or extra clear red cedar if preferred). Columns, newells, balustrade, and steps for front porch; columns and steps for side porch. Gable brackets and louvers. Cased opening between living room and dining room; No. 1 plaster lathes for interior walls and ceiling; plaster not included; porches ceiled overhead; high grade doors and windows to conform to plans. Outside doors and all windows glazed; door and window frames including inside and outside casing and trim cut to specifications and bundled. Weights, cords and pulleys for windows. Locks, nails and hardware. Paint for two coats outside surfaces; stain for inside trim. See general specifications, page one and two.

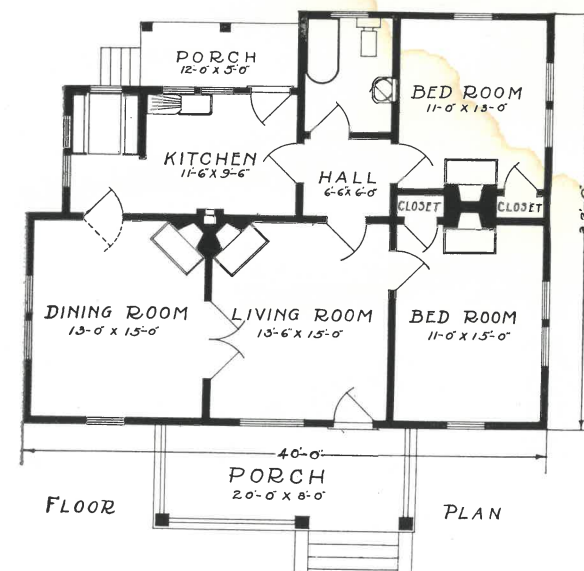


### HAMMOND

A very pretty bungalow with an arrangement that is especially appealing. Imagine yourself sitting before the cheerful fire in the living room, and note how convenient you are to all parts of the house. You are sure to be pleased with breakfast nook in corner of kitchen.

### SPECIFICATIONS

Size 40' x 32'; five rooms, bath, nook and porch; ceiling height main house, 9'-0"; all finish material high grade B and Better Yellow Pine; rat-proof sills and girders; floor joists 2 x 8 on 20" centers, with bridging cut; ceiling joists 2 x 6 on 16" centers; studding 2 x 4 on 16" centers; plates 2 x 4



FLOOR

PLAN

4 doubled; heavy rafters 2 x 6 on 24" centers, sufficient to carry slate surfaced shingle roof; sub-floors for all rooms; 13/16" select Oak floors in living room and dining room; balance of house floored with B and Better 13/16" Yellow Pine; exterior walls storm sheathed and covered with building paper, and bevel siding (or will substitute drop siding, omitting storm sheathing); roof sheathed solid and covered with slate surfaced composition shingles (or extra clear red cedar if preferred); gable brackets, porch columns and steps; No. 1 plaster laths for interior walls and ceiling (plaster not included); porch ceiled overhead; high-grade doors and windows to conform to plans; front and rear doors and all windows glazed; French doors between living room and dining room. Door and window frames, including inside and outside casing and trim complete, cut to specifications and bundled. Weights, cords and pulleys for windows; locks, nails and hardware; paint for two coats outside surfaces; stain for inside trim. See general specifications, page one and two.

Please do not cut the catalog;  
you will want to refer to it  
later.

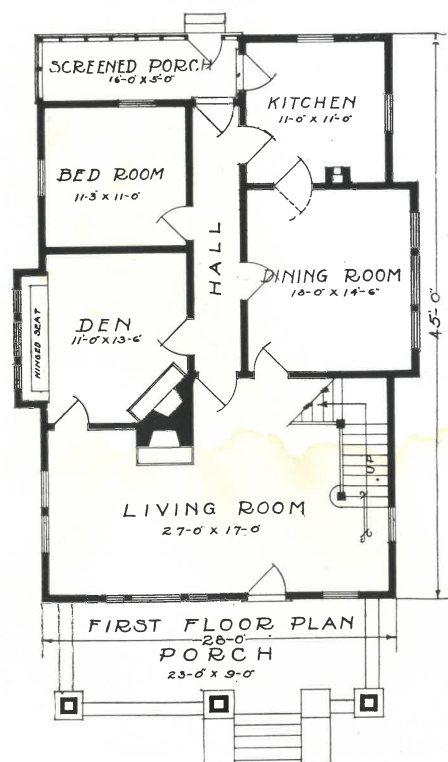
Refer to houses by name and  
page number—we know them.





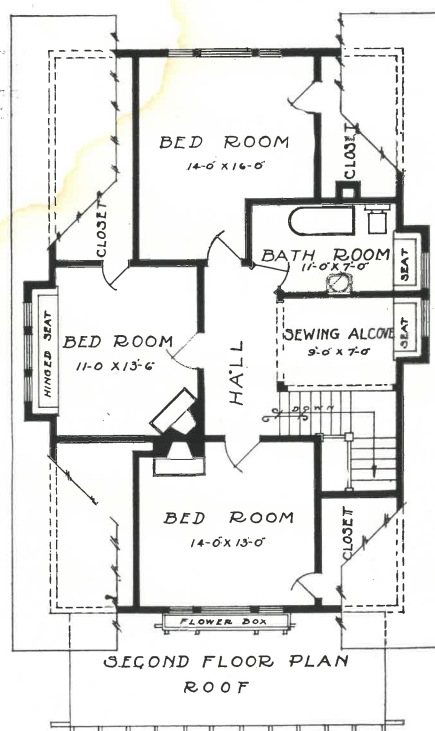
### HUDSON

A large and roomy house with the appearance and advantages of a bungalow. We have added a gable on the left similar to the one on the right, making an elegant bed room on second floor, well ventilated with three windows. Do not overlook the liberal size of these rooms. Also have added sash in front gable, lighting and ventilating side closets.



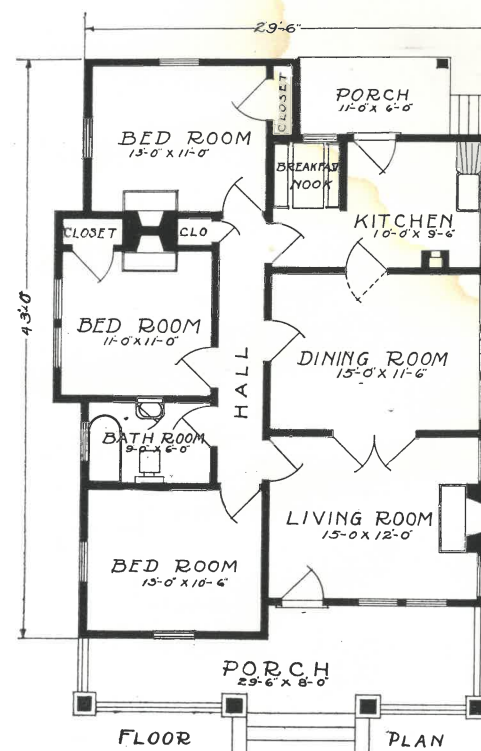
#### SPECIFICATIONS

Size 28' x 45'; nine rooms and bath; height of ceiling, first floor, 9'; second floor, 9'; all finish material high grade B & Better quality; rat-proof sills and girders; floor joists 2" x 8" on 20" centers, with bridging cut; ceiling joists 2" x 6" on 16" centers; studding 2" x 4" on 16" centers; plates 2" x 4" doubled; heavy rafters 2" x 6" on 24" centers, sufficient to carry slate surfaced shingle roof; sub-floors for all rooms; 13/16" select oak floors in reception hall, living room, den and dining room; balance of house floored with 13/16" B & Better yellow pine; exterior walls storm sheathed and covered with building paper and red cedar shingles (bevel siding may be substituted for shingles on walls if desired); roof sheathed solid, covered with slate surfaced composition shingles (or extra clear red cedar if preferred); columns, door and steps for rear porch; flower box; seats for den; No. 1 plaster laths for interior walls and ceilings (plaster not included); porches ceiled overhead; high grade doors and windows to conform to plan; front and rear doors and all windows glazed; door and window frames, including inside and outside casing and trim complete, cut to specifications and bundled; weights, cords and pulleys for windows; locks, nails and hardware; paint for two coats, outside surfaces; stain for shingled walls; stain for inside trim. (See general specifications, page one and two.)



### KIMBERLY

A plan that is greatly admired; the front gable with its attractive trim completes the designer's touch, and it would be hard to improve on the general appearance of this house.

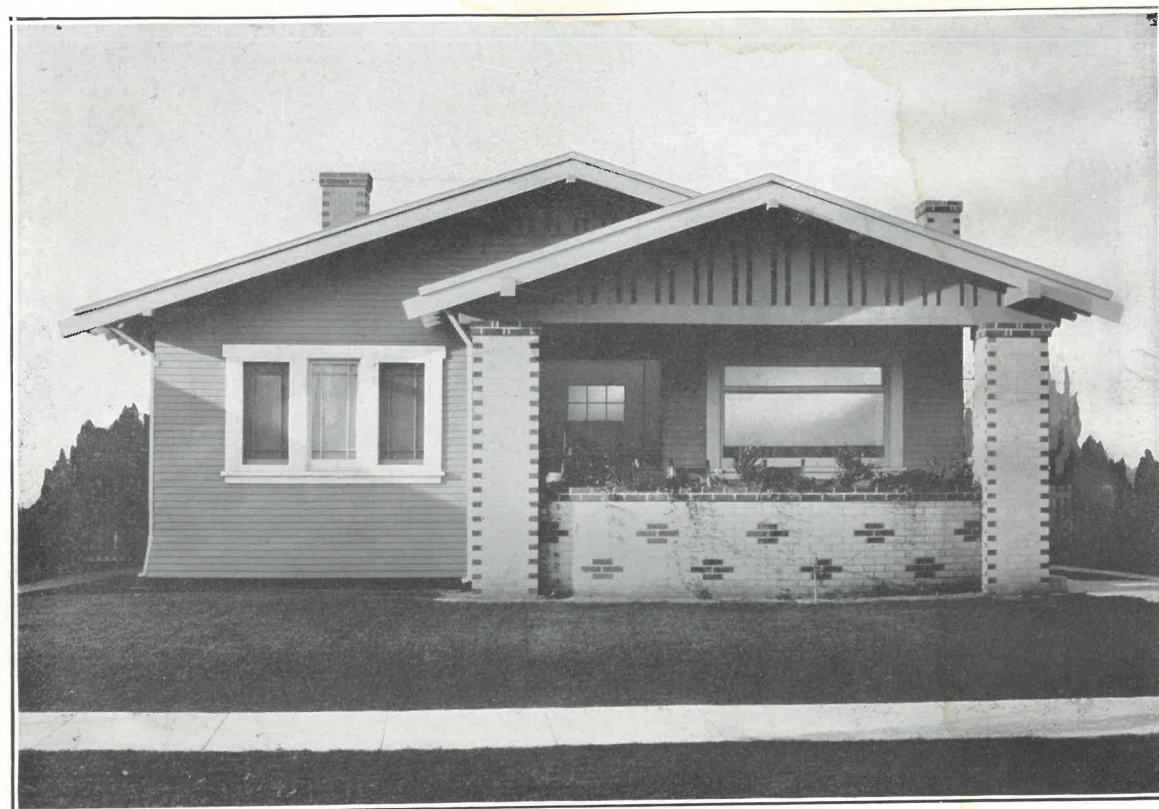


#### SPECIFICATIONS

Size 30'-0" x 43'-0", exclusive of front porch. Height of ceilings 9'; all finish material high grade B and Better quality. Rat proof sills and girders. Floor joists 2 x 8 on 20" centers, with bridging cut. Ceiling joists 2 x 6 on 16" centers; studding 2 x 4 on 16" centers; plates 2 x 4 doubled; heavy rafters 2 x 6 on 24" centers; sufficient to carry slate surfaced shingle roof; sub floors for all rooms, 13/16" select Oak floors in living room and dining room; balance of house floored with B and Better 13/16" Yellow Pine. Exterior walls storm sheathed and covered with building paper and bevel siding (or will substitute drop siding omitting storm sheathing); roof sheathed solid and covered with slate surfaced composition shingles (or extra clear red cedar if preferred). Balustrade, columns, gable brackets, louvers and gable trim, front and rear steps, and column for rear porch; French doors between living room and dining room; No. 1 plaster laths for interior walls and ceilings (plaster not included). Porches ceiled overhead. High grade doors and windows to conform to plans; front and rear doors and all windows glazed; door and window frames including inside and outside casing and trim complete, cut to specifications and bundled. One wood mantel for dining room. Weights, cords and pulleys for windows; locks, nails and hardware; paint for two coats outside surfaces; stain for inside trim; see general specifications page one and two.

Farrar Homes For Comfort





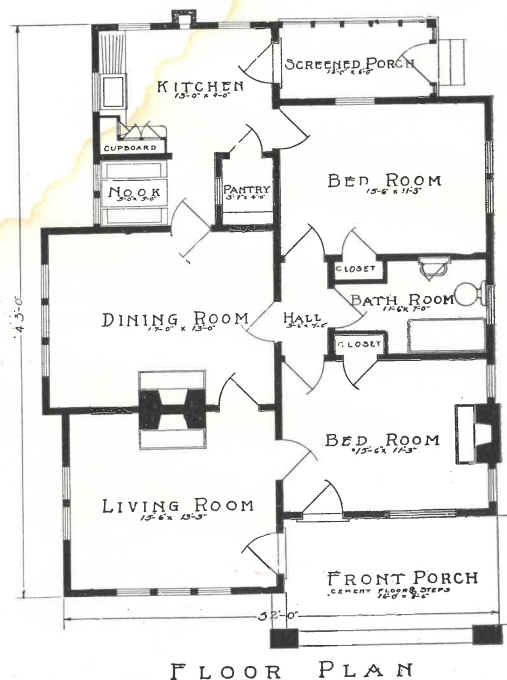
### KINGSPORT

An elegant design of five rooms, well arranged, compact, with no waste space; plans show two chimney spaces, which may be omitted or rearranged if desired. Should French doors or colonnade be desired between living room and dining room, chimney could be located on left side of living room, with window on each side.

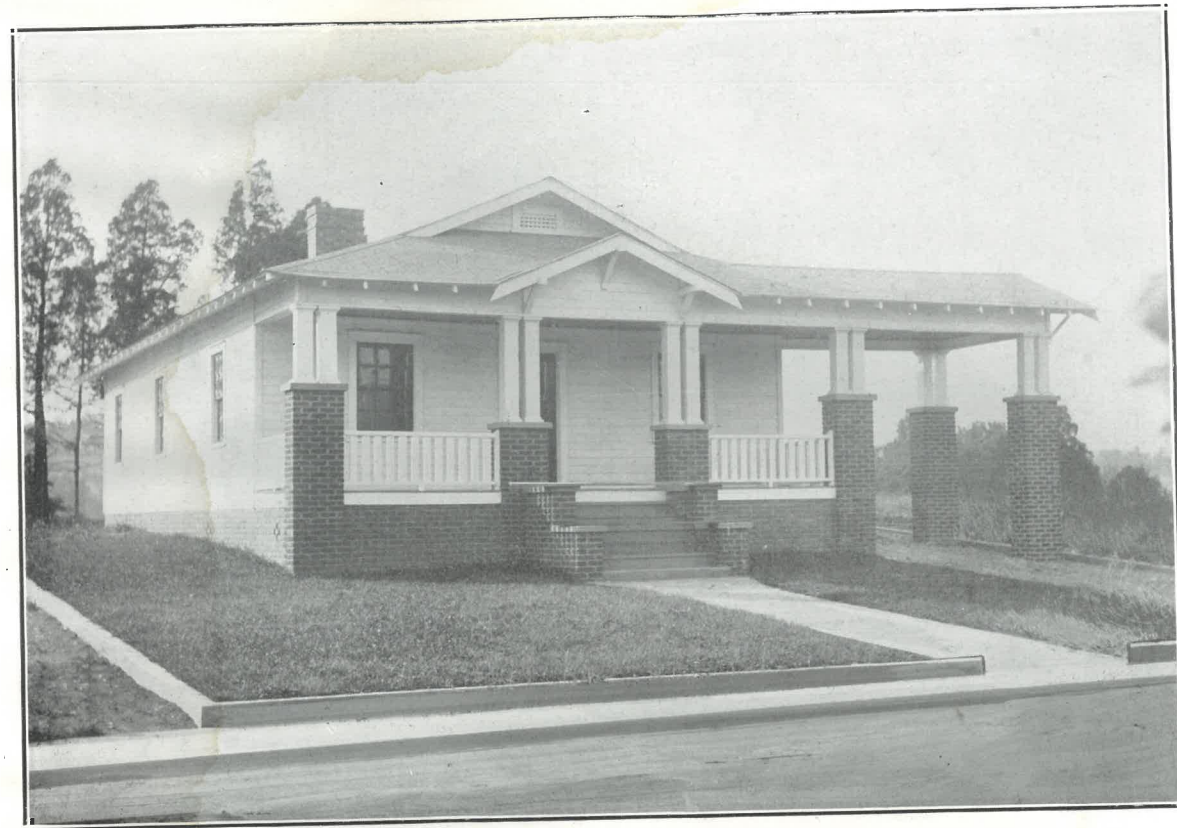
#### SPECIFICATIONS

Size 32' x 43'; height of ceilings 9'; all finish material high grade B and Better quality; rat proof sills and girders; floor joists 2 x 8 on 20" centers; with bridging cut; ceiling joists 2 x 6 on 16" centers; studding 2 x 4 on 16" centers; plates 2 x 4 doubled. Heavy rafters 2 x 6 on 24" centers; sufficient to carry slate surfaced shingle roof; sub floors for all rooms; 13/16" select Oak floors in living room and dining room; balance of house floored with B and Better 13/16" Yellow Pine. Exterior walls storm sheathed and covered with building paper and bevel siding (or will substitute drop siding omitting storm sheathing). Roof sheathed solid and covered with slate surfaced composition shingles (or extra clear red cedar if preferred). Gable brackets and louvers; columns, screened panels, door and steps to rear porch; No. 1 plaster laths for interior walls and ceilings (plaster not included); porches ceiled overhead. Table and seats for nook cupboard in kitchen. High grade doors and windows to conform to plans; front and rear doors and all windows glazed; door and window frames including inside and outside casing and trim, complete cut to specifications and bundled; weights, cords and pulleys for windows; locks, nails and hardware. Paint for two coats outside surfaces; stain for inside trim. See general specifications page one and two.

The house of everyone is to him as his castle.  
—Sir Edward Coke.



FLOOR PLAN



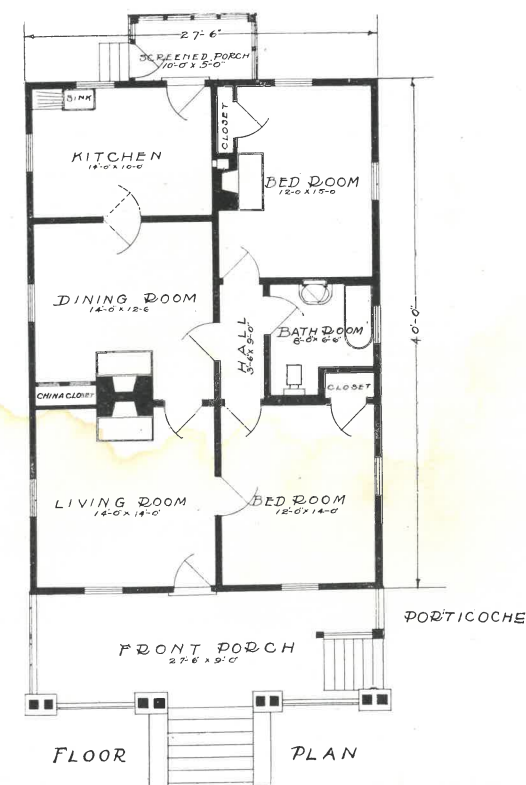
### KIRKWOOD

This design is very cleverly arranged for convenience; note the bathroom is located between the bedrooms; also note the liberal closet spaces in bedrooms. Windows and doors are arranged to conform to floor plan drawing.

#### SPECIFICATIONS

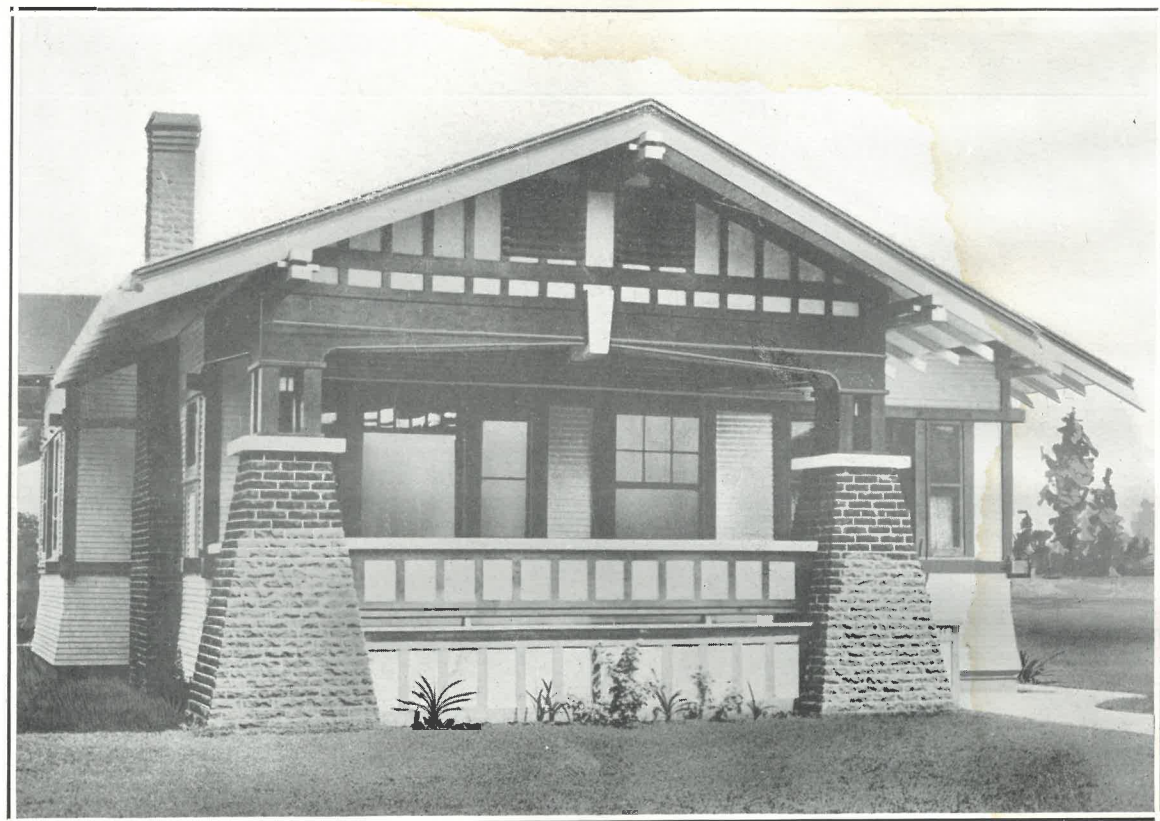
Size 27'-6" x 40'-0", exclusive of porch. Height of ceilings 9'. All finish material No. 1 Common grade. Rat proof sills and girders. Floor joists 2 x 8 on 20" centers; with bridging cut; ceiling joists 2 x 6 on 16" centers; studding 2 x 4 on 16" centers; plates 2 x 4 doubled; heavy rafters 2 x 6 on 24" centers, sufficient to carry slate surfaced shingle roof; sub floor for all rooms; 13/16" No. 1 Common Oak floors in living room and dining room; 13/16" No. 1 Common Pine floors in balance of house. Exterior walls No. 1 Common drop siding; roof sheathed solid, and covered with slate surfaced composition shingles (or extra clear red cedar if preferred). Balustrade, columns, gable brackets and ventilator, steps for front and rear porches. No. 1 plaster laths for interior walls and ceiling (plaster not included). Porches ceiled overhead; doors and windows to conform to plans; front and rear doors and all windows glazed. Two wood mantels for fire place opening. Door and window frames including inside and outside casing, and trim complete cut to specifications, and bundled. Weights, cords and pulleys for windows. Locks, nails and hardware. Paint for two coats outside surfaces; stain for inside trim. See general specifications page one and two.

Home is the result of love, of peace, of joy, of plenty.—Thomson.



FLOOR PLAN





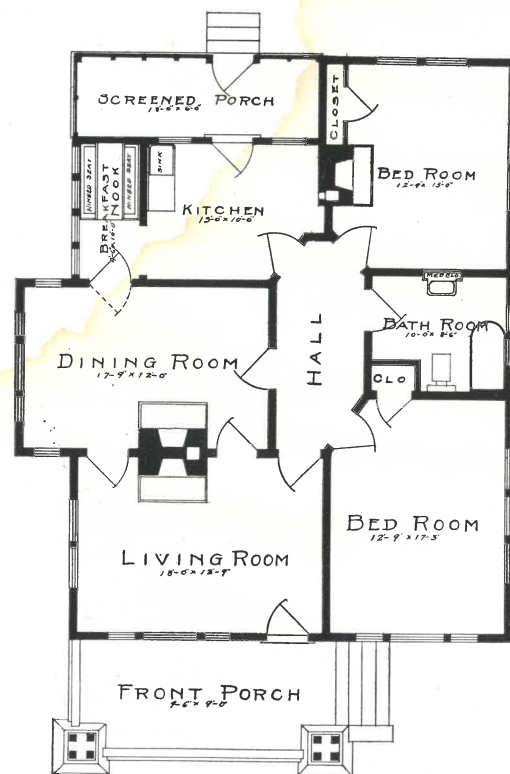
KNOXVILLE

A very clever design, with five rooms, bath, breakfast nook, porches and closet spaces. Entrance is gained at side of porch. The large brick piers add substantial beauty.

**SPECIFICATIONS**

Size 32'-6" x 42'-0", five rooms and bath; ceiling 9' high; finish lumber high grade Yellow Pine, B and Better Quality; rat proof sills and girders; floor joists 2 x 8 on 20" centers, cut bridging; ceiling joists 2 x 6, on 16" centers; studding 2 x 4, on 16" centers; plates 2 x 4 doubled; heavy rafters 2 x 6, on 24"; sufficient to carry slate surfaced roof; all rooms sub floored; 13/16" select Oak floors in living room, and dining room; balance of floors 13/16" B and Better Yellow Pine; exterior walls, storm sheathed and covered with building paper and bevel siding (or will substitute drop siding, without storm sheathing and paper); roof sheathed solid and covered with slate surfaced composition shingle (or extra clear red cedar if preferred). Columns, balustrade, brackets, steps, gable ventilator, screen panels, and screen door for rear porch; table and seats for breakfast nook; No. 1 plaster laths for interior walls and ceilings (plaster not included); porches ceiled overhead, high grade doors, and glazed windows, to conform to plans; window and door frames including inside and outside trim cut to specifications and bundled; weights, cords, and pulleys for windows. Locks, nails, and hardware; paint, for two coats outside surfaces; one coat stain for inside trim (see general specifications).

**We Strive to Please!**



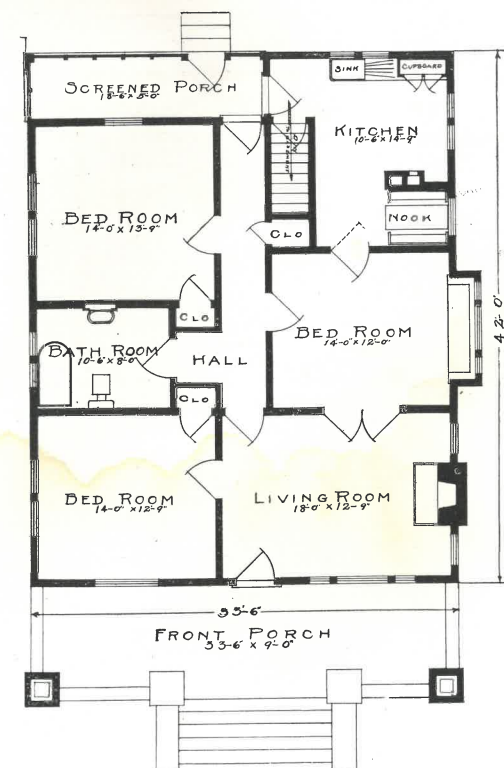
LEXINGTON

A very popular type with five rooms, bath, nook and large porches. This design has connecting hall that is desired by many. Basement stairway in kitchen.

**SPECIFICATIONS**

Size, 33'-6" x 42'-0"; five rooms and bath; all finish lumber B and Better Yellow Pine; ceiling 9' high; floor joists 2 x 8 on 20" centers; ceiling joists 2 x 6 on 16" centers; studding 2 x 4 on 16" centers; plates 2 x 4 doubled; heavy 2 x 6 rafters, on 24" centers; for slate surfaced roof; entire house sub floored; 13/16" select Oak flooring for living and dining room; balance of floors, B and Better Yellow Pine; exterior walls storm sheathed and covered with building paper and bevel siding (or drop siding without paper or storm sheathing). Roof sheathed solid and covered with slate surfaced composition shingles (or extra clear red cedar if preferred); columns; brackets, gable sash, screen panels and screen door for rear porch; table and seats in breakfast nook; No. 1 plastering laths for interior walls and ceilings (plaster not included); high grade doors and glazed windows, to conform to plans. Doors and window frames, including inside and outside trim, cut to specifications and bundled. Weights, cords and pulleys for windows. Locks, nails and hardware. Paint for two coats outside surfaces; one coat stain for inside trim (see general specifications).

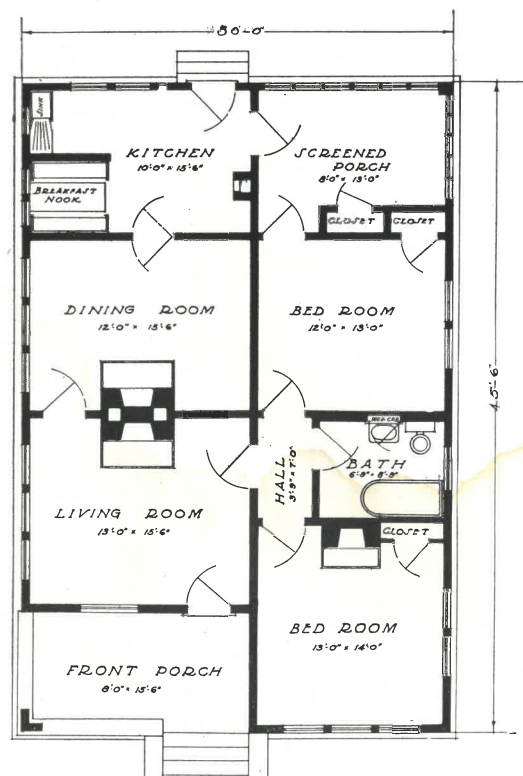
**Pleasant Dealings**







**LOOKOUT**

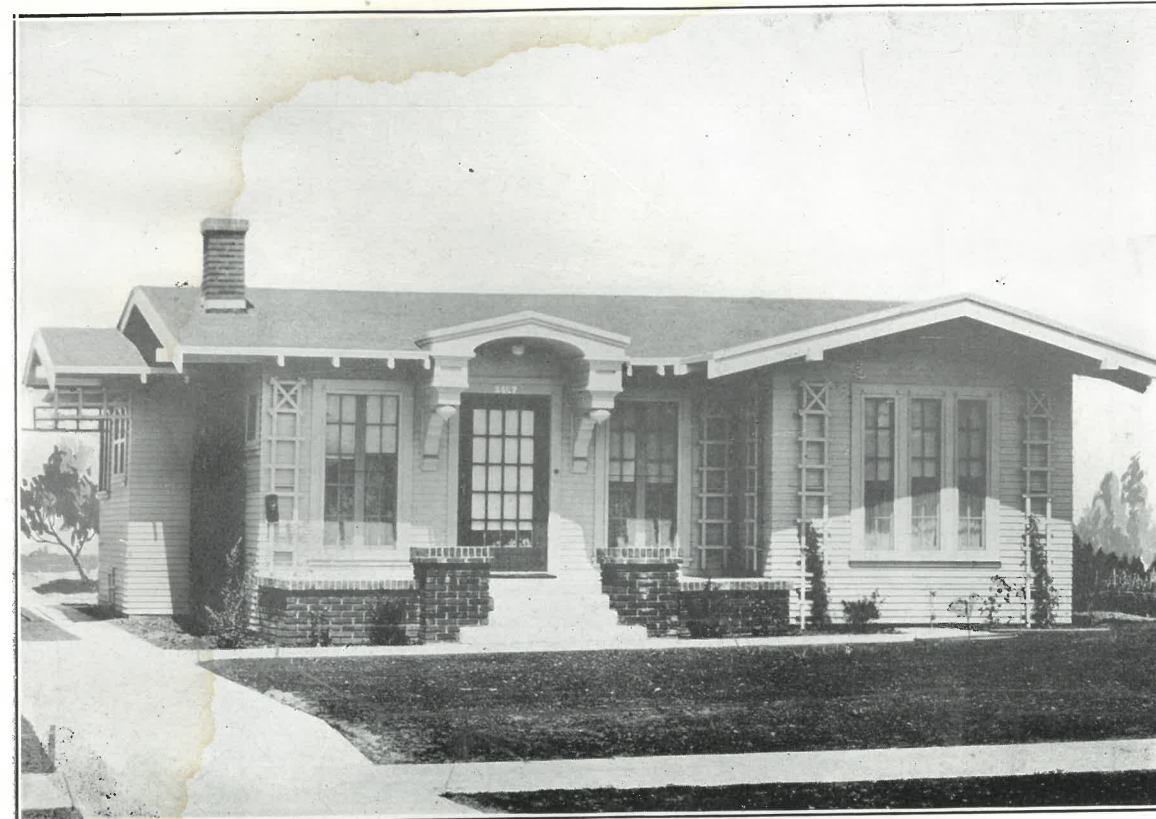


The arrangement of these five rooms and sleeping porch will appeal to many; also the breakfast nook should not be overlooked. Exterior walls may be shingled as shown, or weather-boarded full height.

**SPECIFICATIONS**

Size 30'-0" x 45'-6", five rooms and bath; ceiling 9' high; all finish material high grade B and Better Yellow Pine, rat proof sills and girders; floor joists 2 x 8 on 20" centers; cut bridging; ceiling joists 2 x 6 on 16" centers; studding 2 x 4 on 16" centers; plates 2 x 4 doubled; heavy 2 x 6 rafters; on 24" centers, for slate surfaced roof; entire house sub-floored. 13/16" select Oak floors in living and dining rooms; other floors B and Better Yellow Pine; exterior walls storm sheathed and covered with building paper and bevel siding, or shingled to belt course if preferred, or drop siding may be substituted omitting storm sheathing; roof sheathed solid and covered with slate surface composition shingles (or extra clear red cedars if preferred); columns, steps, brackets, and gable trim; No. 1 plaster laths for interior walls and ceilings (plaster not included); porches ceiled overhead; high grade doors, and glazed windows to conform to plans, which show windows six lights in top sash instead of design shown in cut. Doors and window frames including inside and outside trim cut to specifications and bundled; weights, cords and pulleys for windows. Table and seats in breakfast nook; locks, nails and hardware; paint for two coats outside surfaces; stain for one coat inside trim. (See general specifications).

**Homey-Homes**

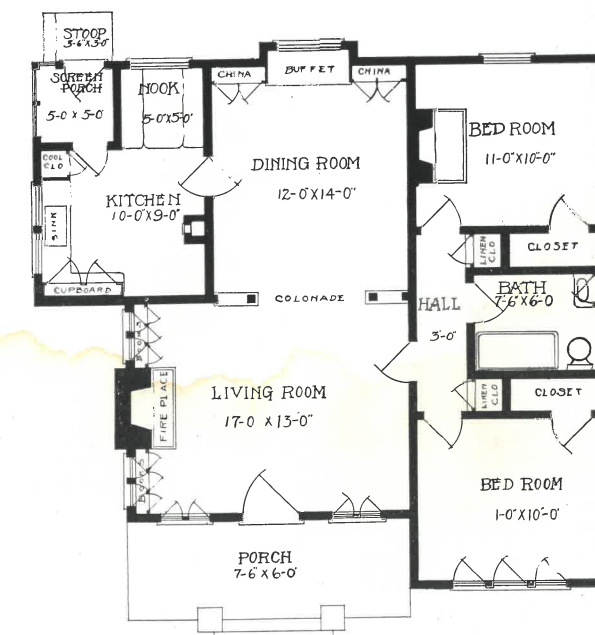


**LOVE NEST**

This design appealed to us strongly, and has had such favorable comment from the various building magazines, we have adopted it as a cover design. Living room and dining room connected with colonnade (or French doors if preferred). Note liberal supply of closet space; breakfast nook, chimney spaces in living room and rear bedroom. An ideal place to start housekeeping.

**SPECIFICATIONS**

Size 35' x 33'; height of ceiling 9'; all finish material high grade B and Better quality; rat proof sills and girders; floor joists 2 x 8 on 20" centers with bridging cut; ceiling joists 2 x 6 on 16" centers; studding 2 x 4 on 16" centers; plates 2 x 4 doubled; heavy rafters 2 x 6 on 24" centers sufficient to carry slate surfaced shingle roof; sub floors for all rooms; 13/16" select Oak floors in living room and dining room; balance of house floored with B and Better 13/16" Yellow Pine; exterior walls storm sheathed and covered with building paper and bevel siding (or will substitute drop siding omitting storm sheathing); roof sheathed solid, and covered with slate surfaced composition shingles. Trellis work for front as shown; columns, screened panels, door and steps for rear porch; No. 1 plaster laths for interior walls and ceilings, plaster not included. High grade doors and windows to conform to plans; front and rear doors and all windows glazed; colonnade between living room and dining room (may be changed to French doors if preferred). Book cases in living room, buffet china closet in dining room, cupboard in kitchen, table and seats in nook; door and window frames including inside and outside casing and trim complete, cut to specifications and bundled; weights, cords and pulleys for windows; locks, nails and hardware. Paint, two coats, for outside surfaces; stain for inside trim (see general specifications page one and two).



**FLOOR PLAN**





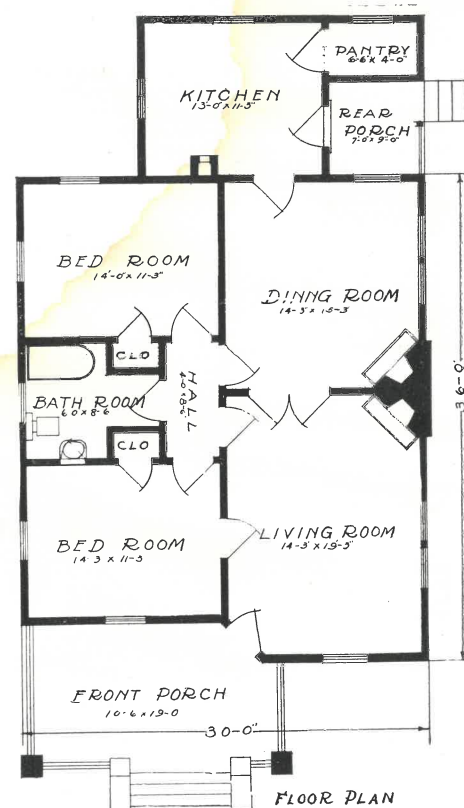
## MAGNET

This is a very attractive five-room bungalow; weather-boarded to base of windows, balance of wall shingled; the concrete floor, steps and pedestals, surmounted with tapering wood columns, add greatly to the appearance of this design.

### SPECIFICATIONS

Size 30' x 48', exclusive of front porch; height of ceilings 9'; all finish material high grade B and Better quality. Rat-proof sills and girders; floor joists 2 x 8 on 20" centers with bridging cut; ceiling joists 2 x 6, on 16" centers; studding 2 x 4 on 16" centers; plates 2 x 4 doubled; heavy rafters 2 x 6 on 24" centers, sufficient to carry slate surfaced shingled roof. Sub-floors for all rooms; 13/16" select Oak floors in living and dining rooms. Balance of house floored with B and Better 13/16" Yellow Pine. Exterior walls storm sheathed and covered with beveled siding up to base of windows; balance of walls and gables shingled (siding on entire wall if preferred, or will substitute drop siding instead of storm sheathing if preferred.) Roof sheathed solid and covered with slate surfaced composition shingles (or extra clear red cedars if preferred). Balustrade and columns for front porch; columns and steps for rear porch; gable brackets and gable sash. No. 1 plastering laths for interior walls and ceiling (plaster not included). Porches ceiled overhead; outside doors and windows glazed; all windows and doors high grade per plans. Door and window frames including inside and outside casing and trim, complete cut to specifications and bundled. Weights, cords and pulleys for windows; locks, nails and hardware. Paint for two coats outside surfaces; stain for shingles on walls; stain for inside trim (see general specifications page one and two).

Home in one form or another is the great object of life.—J. G. Holland.



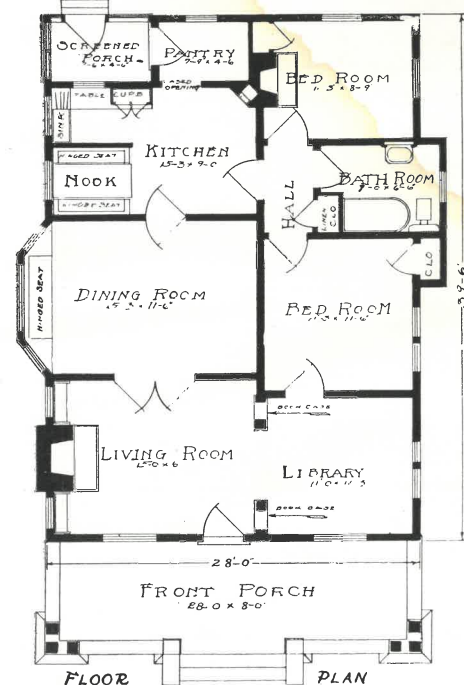
## MANHATTAN

This is a very popular California design and enjoys the record of having been built, including slight changes, 125 times in California. The brick setting and heavy pedestals on front porch and the cement floor and steps give it a substantial and classy effect that is so pleasing.

### SPECIFICATIONS

Size 28' x 39'-6", exclusive of 8' front porch. Height of ceiling 9'; all finish material high grade B and Better quality; rat proof sills and girders; floor joists 2 x 8 on 20" centers with bridging cut; ceiling joists 2 x 6 on 16" centers; studding 2 x 4 on 16" centers; sized plates 2 x 4 doubled; heavy rafters 2 x 6 on 24" centers, sufficient to carry slate surfaced shingle roof; sub floors for all rooms; 13/16" select Oak floors in living room and dining room; and library; balance of house floored with B and Better 13/16" Yellow Pine; exterior walls storm sheathed and covered with building paper and bevel siding (or will substitute drop siding omitting storm sheathing); roof sheathed solid and covered with slate surfaced composition shingles (or extra clear red cedar if preferred). Columns, screen panels, door and steps for rear porch; gable brackets and louvers, and classy columns for front porch; French doors between living room and dining room; colonnade with book cases between living room and library (this may be changed to French doors if preferred). Hinged seat in dining room; breakfast table and seats in nook; work table and cupboard in kitchen. No. 1 plaster laths for interior walls and ceilings (plaster not included). Porches ceiled overhead; high grade doors and windows to conform to plans; front and rear doors and french doors, and all windows glazed. Door and window frames including inside and outside casing and trim complete, cut to specifications and bundled; weights, cords and pulleys for windows; locks, nails and hardware; paint for two coats outside surfaces; stain for inside trim; see general specifications page one and two.

Stint yourself as you think right in other things; but don't scruple freedom in brightening the home.—Chas. Buxton.





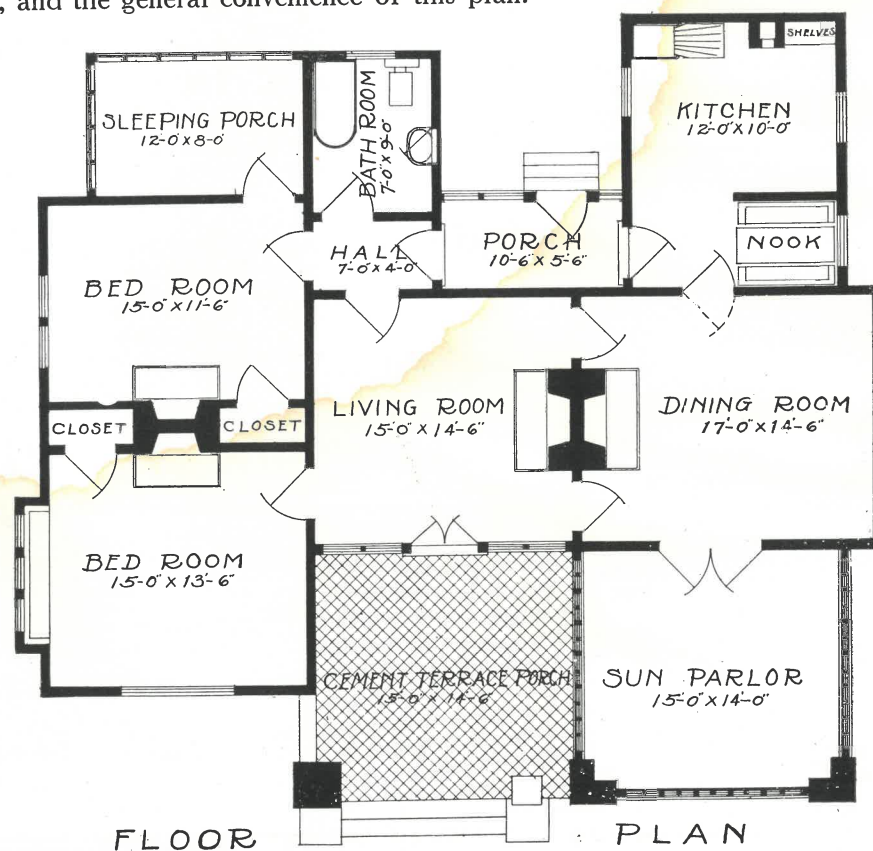


**PALACETTE**

A real classy bungalow with floor space suitable for a family requiring three bedrooms; note size of living room and dining room, and the general convenience of this plan.

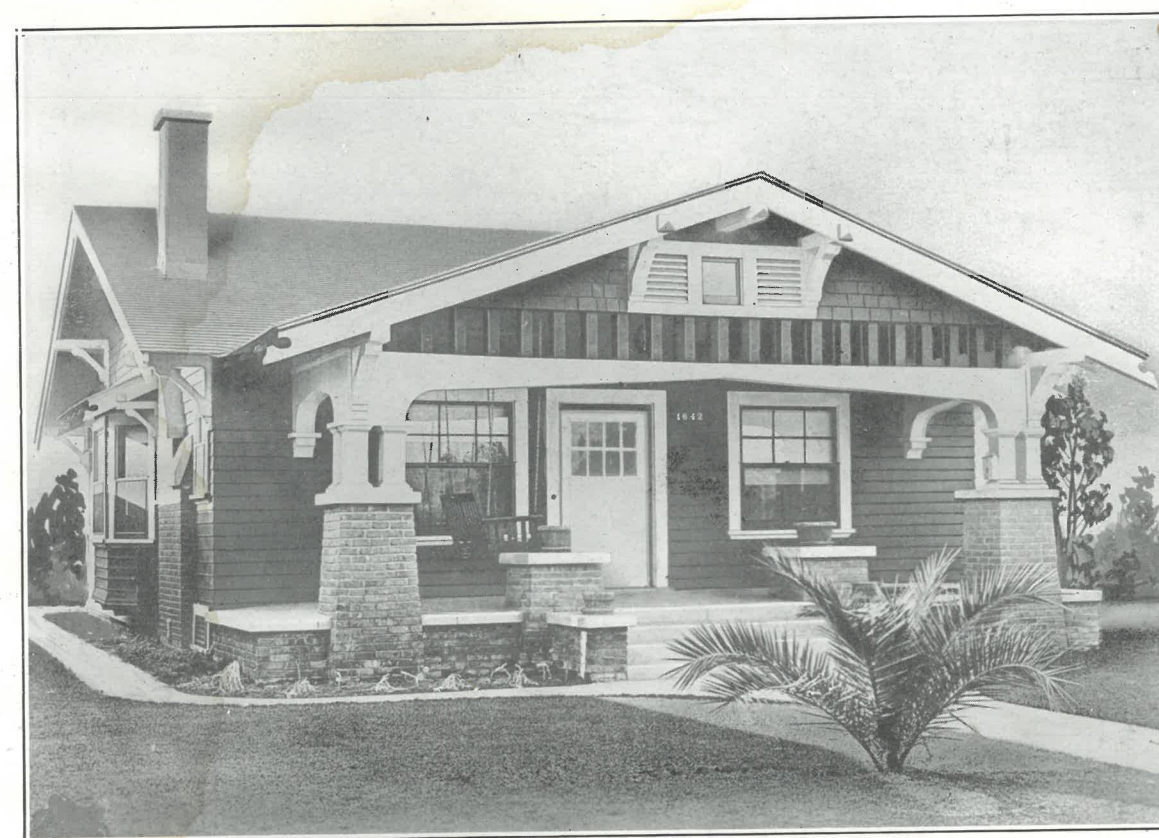
**SPECIFICATIONS**

Five rooms; sleeping porch, bath, breakfast nook and sun-parlor, or sun-parlor may be changed to extension of terrace porch. All finish lumber B and Better Yellow Pine; ceiling 9' high; rat proof sills and girders; floor joists 2 x 8, on 20" centers; ceiling joists 2 x 6, on 16" centers; studding 2 x 4 on 16" centers; double plates 2 x 4; heavy 2 x 6 rafters on 24" centers; entire house sub floored; 13/16" Select Oak flooring for living room and dining room; other floors B and Better Yellow Pine. Exterior walls storm sheathed and covered with building paper and bevel siding or shingled if preferred; roof sheathed solid and covered with slate surfaced roll roofing; brackets, gable ventilator, screen panels and screen door for rear porch; table and seats in breakfast nook; No. 1 plastering laths for interior walls and ceilings (plaster not included); high grade doors and glazed windows to conform to plans; door and window frames including inside and outside trim cut to specifications and bundled; weights, cords, and pulleys for double hung windows; locks, nails and hardware; paint or stain, two coats for outside surfaces, one coat stain for inside purposes (see general specifications).



FLOOR

PLAN

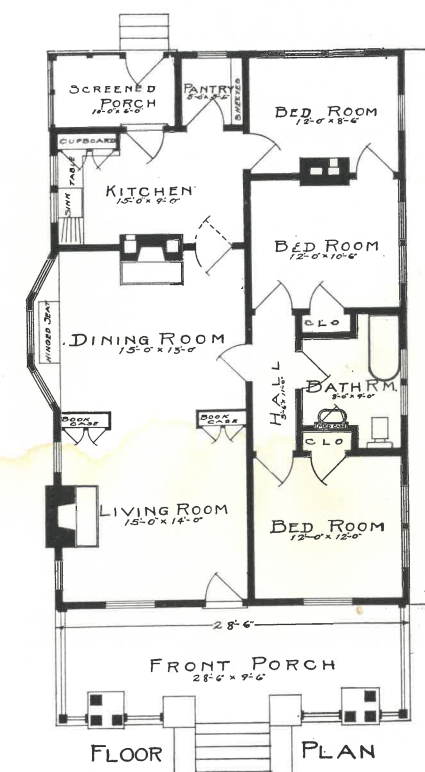


**PALM BEACH**

Just the design for the family needing six rooms. The rear bedroom has three windows, almost making it a sleeping porch, or more windows may be added if desired; note the large front porch.

**SPECIFICATIONS**

Size 28' 6" x 45' 0"; six rooms and bath, ceiling 9' high; all finish material high grade Yellow Pine, B and Better quality; rat proof sills and girders; floor joists 2 x 8 on 20" centers, with bridging cut; ceiling joists 2 x 6 on 16" centers; studding 2 x 4, on 16" centers; plates 2 x 4 doubled; heavy rafters 2 x 6, on 24" centers, sufficient to carry slate surfaced composition roof. Sub-floors for all rooms; 13/16" select Oak flooring for living room, and dining room; balance of flooring 13/16" B and Better Yellow Pine; exterior walls storm sheathed and covered with building paper and bevel siding (or will substitute drop siding, omitting storm sheathing and paper). Roof sheathed solid and covered with slate surfaced composition shingles (or extra clear red cedar if preferred). Columns, brackets, gable sash and ventilators; screen panels and screen door for rear porch; No. 1 plaster laths for interior walls and ceilings (plaster not included); porches ceiled overhead; high grade doors and windows to conform to plans; front and rear doors and all windows glazed; window and door frames including inside and outside trim cut to specifications and bundled; weights, cords and pulleys for windows; book-cases as shown on plans; cupboard and work table in kitchen; locks, nails and hardware; paint for two coats outside surfaces; one coat stain for inside trim (see general specifications).



FLOOR

PLAN

**Co-operation—The Key To Success**



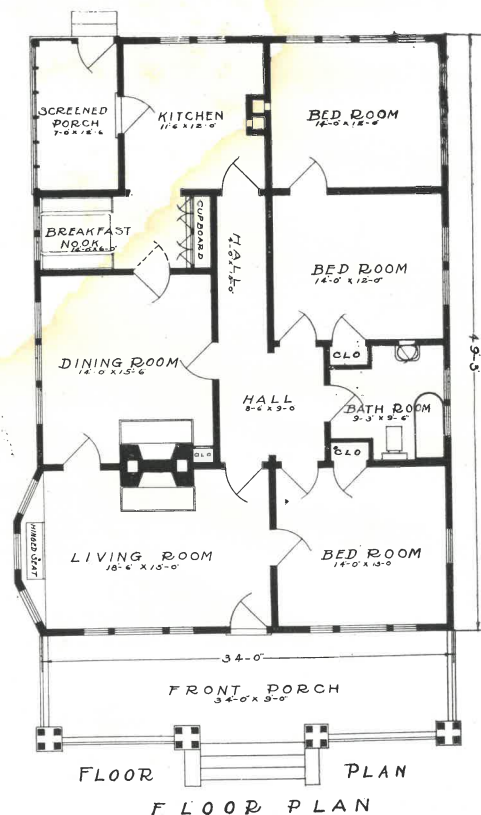


PALMETTO

A design well balanced, with six rooms and bath, with sufficient windows in corner bedroom to make it an ideal sleeping porch. The breakfast nook adds greatly to the convenience of this design.

SPECIFICATIONS

Size 34' 0" x 49', exclusive of front porch; six rooms and bath, all finish lumber, B and Better Yellow Pine; ceiling 9' high; rat proof sills and girders; floor joists 2 x 8, on 20" centers, with cut bridging; ceiling joists 2 x 6, on 16" centers; studding 2 x 4, on 16" centers; plates, 2 x 4 doubled; heavy rafters 2 x 6, on 24" centers, sufficient to carry slate surfaced roof; entire house sub floored; 13/16" select Oak floors, for living and dining room; balance of floors B and Better Yellow Pine; storm sheathing for exterior walls; with building paper and bevel siding (or will substitute drop siding, omitting storm sheathing and paper); solid sheathing for roof covered with slate surfaced composition shingles (or extra clear red cedar if preferred). Columns, balustrade, ventilators, gable sash; screen panel and screen door for rear porch; No. One plaster laths for interior walls and ceilings (plaster not included); porches ceiled overhead; high grade doors and glazed windows according to plans; window and door frames including inside and outside trim cut to specifications and bundled; table, seats, and cupboard in breakfast room; hinged seat in living room; locks, nails and hardware; paint, for two coats outside surfaces; one coat stain, for inside trim (see general specifications).

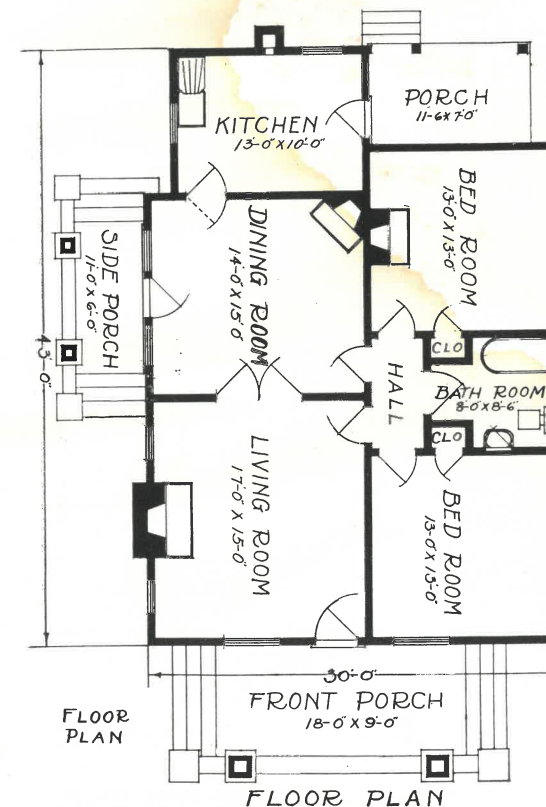


PINE BLOOM

A cozy bungalow of five rooms, bath, front, rear and side porches. A well balanced house with an appealing appearance; special study of the arrangement is requested.

SPECIFICATIONS

Size 29' 6" x 43' exclusive of front and side porches. Height of ceilings 9'; all finish material high grade B and Better quality; rat proof sills and girders; floor joists 2 x 8 on 20" centers with bridging cut; ceiling joists 2 x 6 on 16" centers; studding 2 x 4 on 16" centers; plates 2 x 4 doubled; heavy rafters 2 x 6 on 24" centers sufficient to carry slate surfaced shingle roof. Sub floors for all rooms; 13/16" select Oak floors in living room and dining room; balance of house floored with B and Better 13/16" Yellow Pine. Exterior walls storm sheathed and covered with building paper and bevel siding (or will substitute drop siding omitting storm sheathing). Roof sheathed solid and covered with slate surfaced composition shingles (or extra clear red cedar shingles if preferred). Columns for front, side, and rear porches; steps for rear porch. Gable louvers, and brackets; No. 1 plaster laths for interior walls and ceilings (plaster not included). Porches ceiled overhead. High grade doors and windows per plans; outside doors and windows glazed; door and window frames including inside and outside casing and trim complete cut to specifications and bundled. Weights, cords and pulleys for windows. Glazed French doors between living room and dining room. Bookcases and window seats in living room. Locks, nails and hardware; paint for two coats outside surfaces; stain for inside trim. See general specifications page one and two.



The Golden Rule In Business

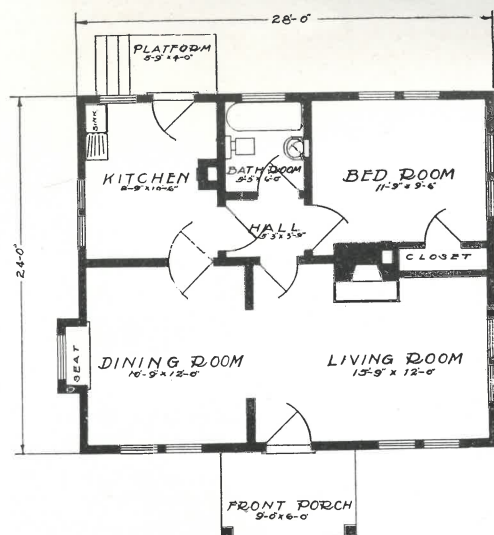
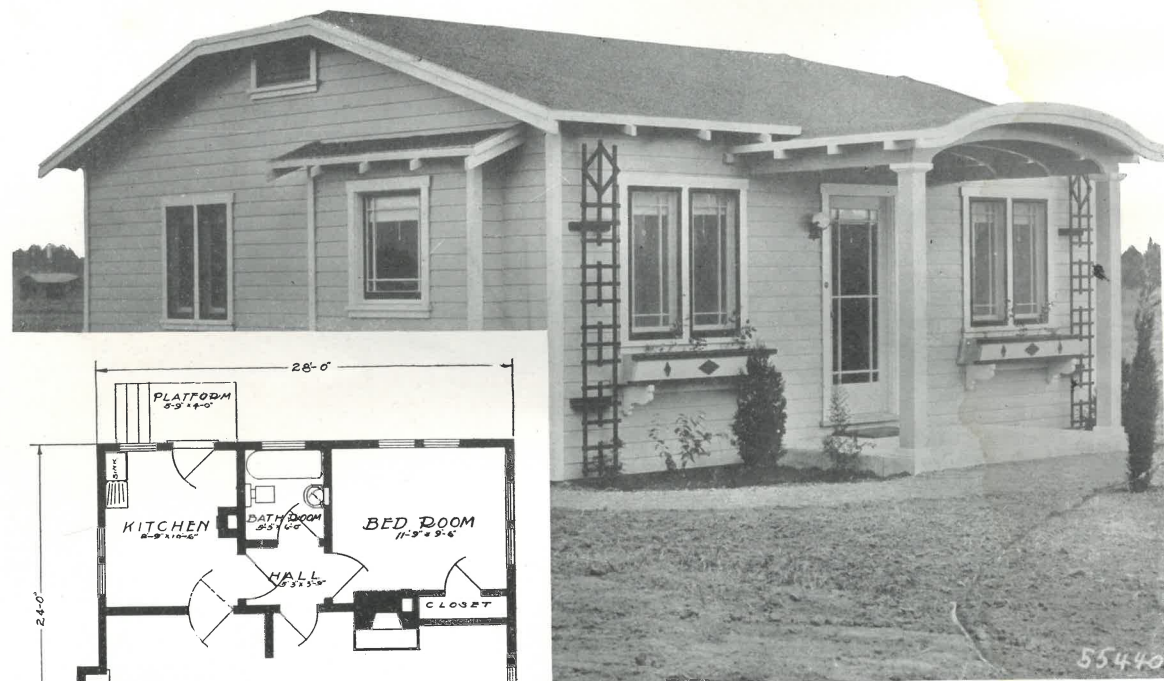




## INDUSTRIALS

We are especially prepared to handle orders for industrial houses.

The following designs have proven very popular with our customers, however we are also prepared to submit estimates on any special designs you may already have planned.



## APPALACHIAN

An unusually attractive design that you will be compelled to admire; is provided with chimney between living room and bed room, as indicated on floor plan, but which does not show in the perspective.

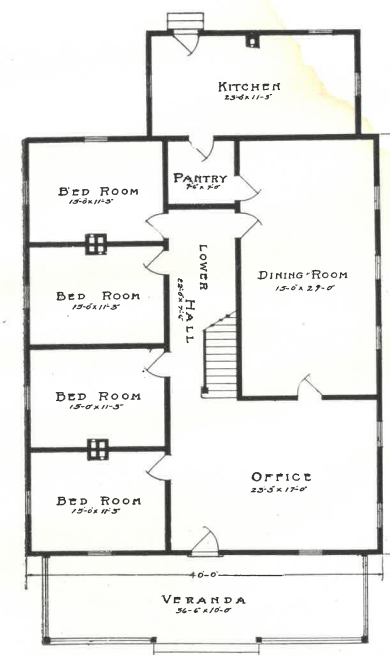
### SPECIFICATIONS

Size 28' 0" x 24' 0" exclusive of porches. Four rooms and bath. Height of ceiling 9'; all finish material high grade No. 1 Com. yellow pine. Rat-proof sills and girders; floor joists 2 x 8 on 20" centers; cut bridging; ceiling joists 2 x 6 on 16" centers; studding 2 x 4 on 16" centers; plates 2 x 4 doubled; heavy rafters 2 x 6 on 24" centers, sufficient to carry slate surfaced composition roof; sub floors for all rooms overlaid with high grade No. 1 Com. yellow pine flooring; exterior walls stom sheathed and covered with building paper and bevel siding (or will substitute drop siding omitting storm sheathing and paper); roof sheathed solid and covered with slate surfaced composition roll roofing; gable ventilators; porch columns; circle top porch; number one plaster laths for interior walls and ceiling (plaster not included); front and rear doors and windows glazed; high grade doors and windows to conform to plans. Door and window frames including inside and outside trim complete, cut to specifications and bundled. Weights, cords and pulleys for double hung windows; locks, nails and hardware; paint for two coats outside surfaces; stain for inside trim. Flower boxes and rose trellis not included in standard specifications but may be added for small additional cost; see general specifications page one and two.

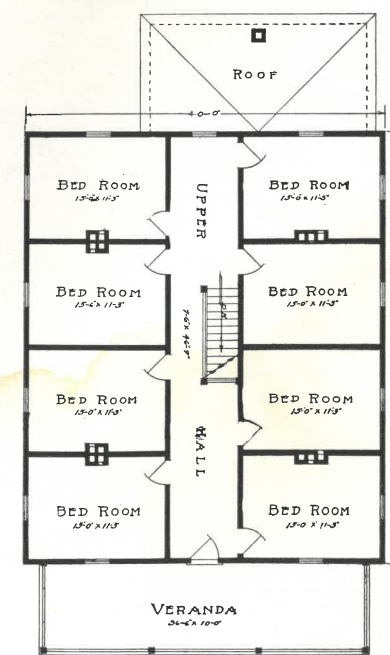


## BANNER FORD

In every industrial community there is a demand for a small hotel or boarding house. The BANNER FORD is provided with two porches, large office, hall, dining room, kitchen, pantry and four bed rooms on first floor and eight bed rooms and hall on second floor; an ideal plan has proven very popular.



FIRST FLOOR PLAN

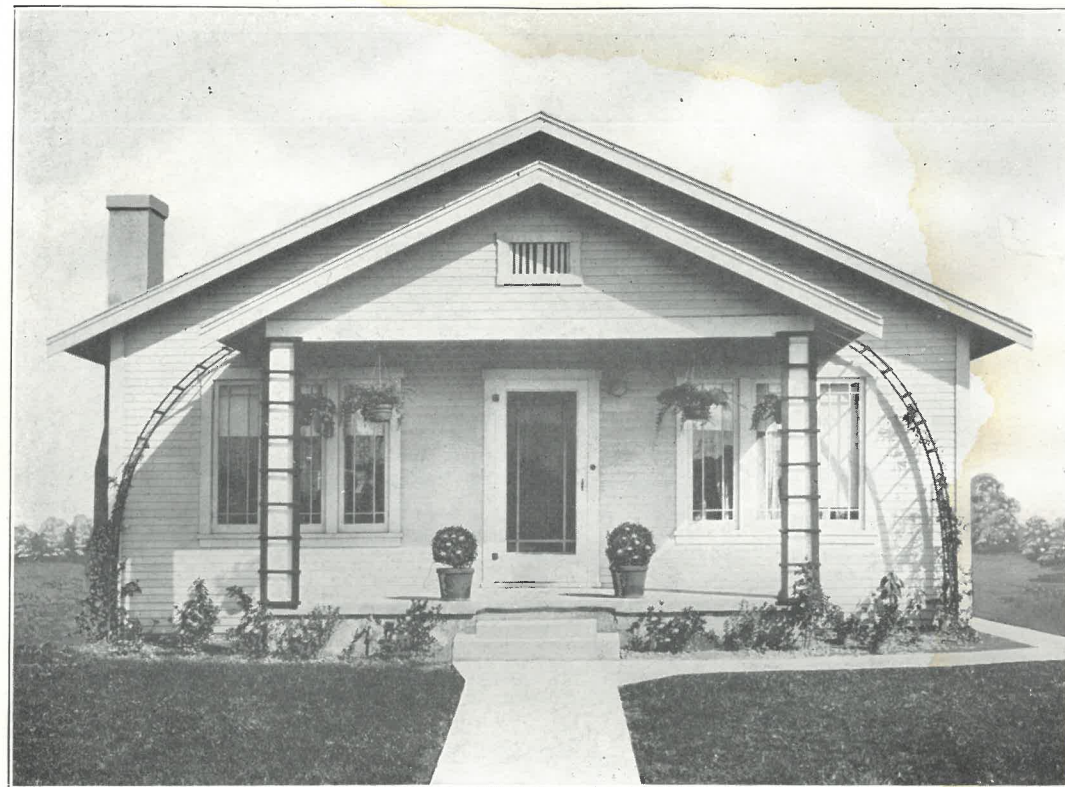


SECOND FLOOR PLAN

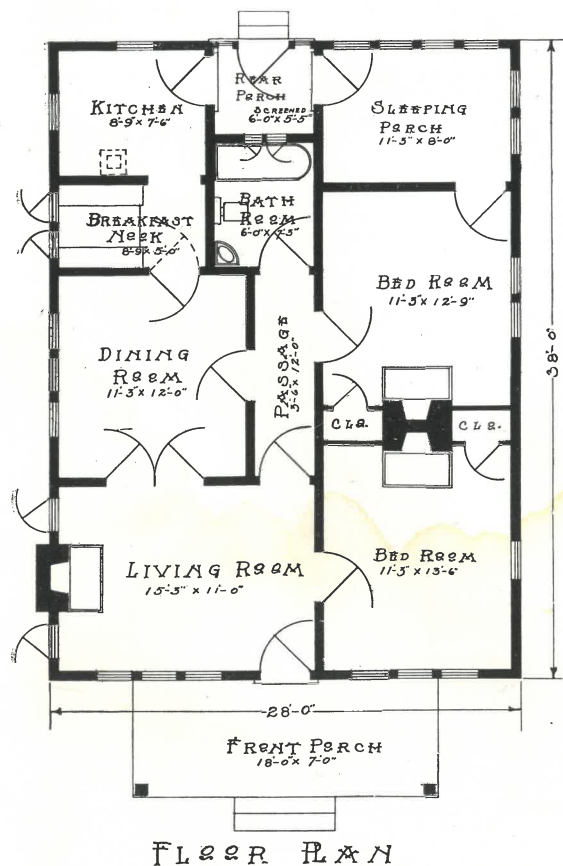
### SPECIFICATIONS

Main building 40' x 48'; kitchen 12' x 24'; front porch 10' x 36'; all finish material No. 1 Com. grade. Rat proof sills and girders; floor joists 2 x 10 on 20" centers, with bridging; ceiling joists 2 x 6 on 16" centers; studding 2 x 4, on 16" centers; rafters 2 x 6 on 24" centers; flooring No. 1 Com. yellow pine; exterior walls No. 1 Common drop siding; roof sheathing spaced and covered with red cedar shingles (or sheathed solid and covered with three-ply composition roofing). Columns, balustrade and steps for porch; plaster laths for interior walls and ceilings (plaster not included); porches ceiled overhead. Doors and window frames complete K. D. with casing and trim; nails, locks, hardware, weights and cords, and sash pulleys; paint for two coats outside surfaces; stain for inside trim. If ceiling is wanted instead of plaster laths, price will be quoted on application.





**SELZFAST**



The exterior of this design is planned along plain but very pleasing lines; the floor plan is especially appealing; French doors between living room and dining room; breakfast nook and sleeping porch. We invite careful study of this plan.

**SPECIFICATIONS**

Size 28' x 38' exclusive of porch. Height of ceiling 9'; all finish material high grade B and Better quality; rat proof sills and girders; floor joists 2 x 8 on 20" centers with bridging cut. Ceiling joists 2 x 6 on 16" centers; studding 2 x 4 on 16" centers plates 2 x 4 doubled; heavy rafters 2 x 6 on 24" centers sufficient to carry slate surfaced shingle roof; sub floors for all rooms. 13/16" select Oak floors in living room and dining room; balance of house floored with B and Better 13/16" Yellow Pine. Exterior walls storm sheathed and covered with building paper and bevel siding (or will substitute drop siding omitting storm sheathing). Roof sheathed solid and covered with slate surfaced composition shingles (or extra clear red cedars if preferred). Columns, and louver for front porch; screened panels, doors and steps for sleeping porch and rear porch. No. 1 plaster laths for interior walls and ceilings (plaster not included). Porches ceiled overhead. High grade doors and windows to conform to plans; front and rear doors, all windows and French doors glazed; door and window frames, including inside and outside casing and trim complete, cut to specifications and bundled. Weights, cords and pulleys for windows; table and seats for breakfast nook; locks, nails and hardware; paint for two coats outside surfaces; stain for inside trim; see general specifications page one and two.

**Farrar Service**

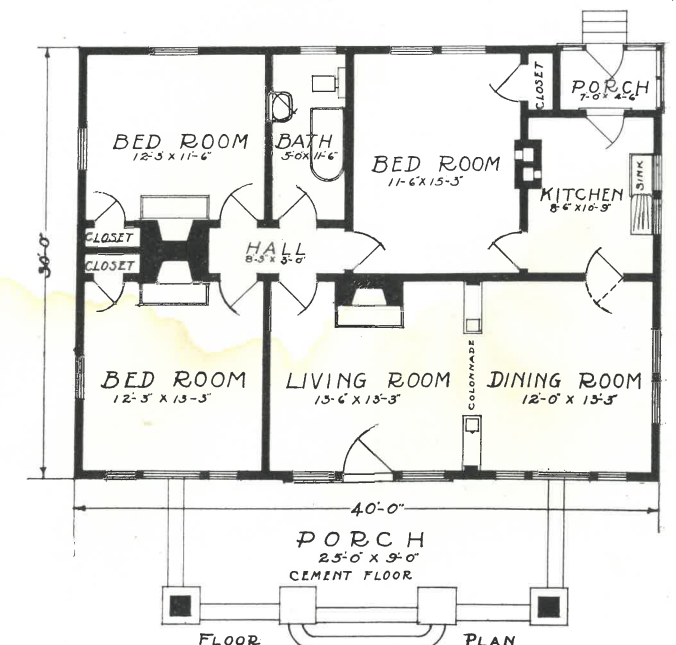


**TOXAWAY**

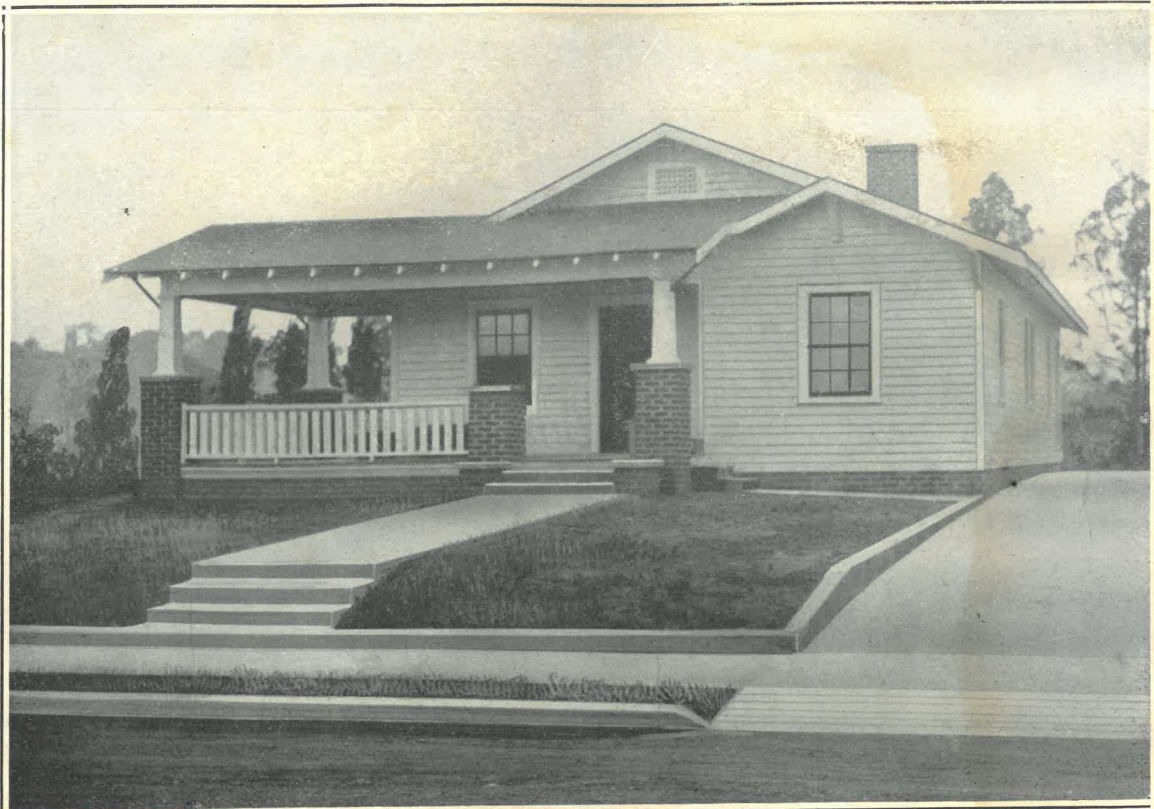
**SPECIFICATIONS**

Size 40' x 30'; six rooms and bath; height of ceilings 9'; all finish material high grade B and Better quality; rat proof sills and girders. Floor joists 2 x 8, on 20" centers, with bridging cut; ceiling joists 2 x 6 on 16" centers; studding 2 x 4 on 16" centers; plates 2 x 4 doubled; heavy rafters 2 x 6 on 24" centers, sufficient to carry slate surfaced shingle roof; sub floors for all rooms; 13/16" select Oak floors in living room and dining room; balance of house floored with B and Better 13/16" Yellow Pine. Exterior walls storm sheathed and covered with building paper and bevel siding (or will substitute drop siding omitting storm sheathing). Roof sheathed solid and covered with slate surfaced composition shingles (or extra clear red cedars if preferred). Gables shingled. Front porch columns, rear porch screened panels, columns, door and steps. Gable brackets, and gable sash; No. 1 plaster laths for interior walls and ceilings (plaster not included). Porches ceiled overhead; high grade doors and windows to conform to plans. Outside doors and windows glazed; colonnade between living room and dining room or glazed French doors if preferred. Door and window frames including inside and outside casing and trim complete cut to specifications and bundled. Weights, cords, and pulleys for windows. Nails, locks, and hardware. Paint for two coats outside surfaces. Stain for shingles in front gable. Stain for inside trim. See general specifications, page one and two.

Beautiful plans and lofty dreams lose their value unless they are in some way built into action. The things people would do "if they had time" are not the things that are feeding the hungry or pushing the world along.







## WILLIAMSON

A real home, constructed along plain lines, but with an arrangement that really appeals. The large front porch should not be overlooked.

### SPECIFICATIONS

Size, exclusive of front and rear porches 27' 6" x 39' 0", five rooms and bath; ceiling 9' high; all finish material high grade Yellow Pine No. 1 Common quality; rat proof sills and girders; floor joists 2 x 3 on 20" centers, cut bridging; ceiling joists 2 x 6, on 16" centers; studding 2 x 4, on 16" centers; plates 2 x 4 doubled; heavy rafters 2 x 6, on 24" centers, sufficient for slate surfaced composition shingle roof; sub floors for all rooms; 13/16" No. 1 Com. Oak flooring for living room and dining room; balance of flooring 13/16" No. 1 Common Yellow Pine. Exterior walls storm sheathed and covered with building paper and bevel siding (or drop siding without storm sheathing or paper); roof sheathed solid and covered with slate surfaced composition shingles (or extra clear red cedar if preferred); columns, balustrade, brackets, gable ventilator, screen panels and screen door for rear porch; No. 1 plastering laths for interior walls and ceiling (plaster not included); porches ceiled overhead; high grade doors and glazed windows to conform to plans; window and door frames, including inside and outside trim cut to specifications and bundled; weights, cords and pulleys for windows. Locks, nails and hardware; paint for two coats outside surfaces; one coat stain for inside trim (see general specifications).

Form your own judgement and buy of whomever serves you best.

